

Sovereign bond market integration: the euro, trading platforms and globalization

Alexander Schulz

(Deutsche Bundesbank)

Guntram B. Wolff

(Deutsche Bundesbank and University of Pittsburgh)



Discussion Paper
Series 1: Economic Studies
No 12/2008

Discussion Papers represent the authors' personal opinions and do not necessarily reflect the views of the Deutsche Bundesbank or its staff.

Editorial Board:

Heinz Herrmann
Thilo Liebig
Karl-Heinz Tödter

Deutsche Bundesbank, Wilhelm-Epstein-Strasse 14, 60431 Frankfurt am Main,
Postfach 10 06 02, 60006 Frankfurt am Main

Tel +49 69 9566-1

Telex within Germany 41227, telex from abroad 414431

Please address all orders in writing to: Deutsche Bundesbank,
Press and Public Relations Division, at the above address or via fax +49 69 9566-3077

Internet <http://www.bundesbank.de>

Reproduction permitted only if source is stated.

ISBN 978-3-86558-428-1 (Printversion)

ISBN 978-3-86558-429-8 (Internetversion)

Abstract:

We disentangle different driving factors of sovereign bond market integration by studying yield co-movements of EMU countries, the UK, the US and 16 German Länder in the last 15 years. At a low frequency of weeks, bond market integration has increased gradually in the course of the last 15 years in EMU countries, as well as the UK, the US and the German Länder. The euro, as well as increasing international capital flows, appear to drive low frequency integration. In contrast, yield adjustments to changes of the German benchmark bond at high frequencies, i.e., 2 days, remain relatively low until October 2000, when a sharp increase in integration can be observed in all samples. The increase in high frequency integration can be attributed to electronic trading platforms becoming functional. The change-over from national currencies to the euro can not explain the dramatic increase in high frequency integration.

Keywords: sovereign bond market, bond market integration, EMU, electronic trading

JEL-Classification: E42, E44, F33, F37, G15

Non-technical summary

The integration of international capital markets is important for the efficient allocation of capital. Sovereign bond markets are integrated if those bonds that are close substitutes, have the same expected return and consequently their prices tend to fluctuate together. The advent of the European Economic and Monetary Union (EMU) is regarded as a crucial driving force of European financial integration. The abolition of currency risks with the introduction of the euro together with increased bond standardization are regarded as the main elements behind increased European bond market integration.

In this paper, we take a closer look at the factors driving bond market integration. Which mechanisms have rendered government bonds in EMU closer substitutes, that has led to the widely documented increase in co-movements of yields? How much can be attributed to the elimination of exchange rate changes, exchange rate risk, globalization of flows and finally technological improvements in price discovery processes? We do so by comparing the result of euro area countries with two control groups: the US and the UK on the one hand and the German states (Länder) on the other hand. Anglo-saxon bonds reflect the global dimension of bond market integration not directly related to the creation of the euro. The unique data set on the German sub-national government bond market allows to assess integration trends in a long-standing "currency union". Finally, we distinguish low and high frequency adjustments and argue that technological improvements should be especially visible in relatively high frequency correlations of yields.

The first important finding is that low-frequency bond yield dynamics converged not only in euro area countries but also in the UK, the German states (Länder) and to a somewhat lesser extent in the US. This gradual increase on a low frequency started already in the early to mid 1990s. At around 1999 yields look almost perfectly integrated at a low frequency in EMU. Exchange rate factors seem to be an important determinant of this convergence towards EMU. We show that controlling for the exchange rate through swap rate spreads considerably increases integration for EMU countries before the introduction of the euro. Factors beyond the exchange rate also contribute to this rise in low frequency integration as it is also observable in Germany's states. Deeper capital markets, greater bond standardization as well as larger international capital flows can explain low frequency integration in Germany.

The second major result is that on a daily frequency a very different pattern emerges. A strong jump in the co-movement of yields is observed during the year 2000 for the euro area countries. However, it is also found in the UK and the US. In contrast, the integration level is almost zero for small German Länder bonds. The strong daily increase can be attributed to technical innovations in bond trading (electronic trading platforms) which increase price transparency and competition while reducing transaction costs. Indeed, breakpoint tests exhibit a strong break for the UK, US as well as the euro area around the date of the introduction of the Eurex-Bonds platform. In contrast, the German Länder bonds are in general not traded on electronic platforms and therefore not well integrated. For those few Länder bonds that are traded, the integration level is comparable to other euro area bonds.

Nicht-technische Zusammenfassung

Für eine effiziente Kapitalallokation ist die Integration der internationalen Kapitalmärkte von entscheidender Bedeutung. Staatsanleihemärkte sind dann integriert, wenn substituierbare Anleihen die gleiche erwartete Rendite abwerfen und sich ihre Preise tendenziell im Gleichlauf bewegen. Die Schaffung der europäischen Wirtschafts- und Währungsunion (WWU) gilt als entscheidender Anstoß für die Verflechtung der europäischen Finanzmärkte. Der Wegfall des Währungsrisikos durch die Einführung des Euro und die zunehmende Standardisierung der Anleihen werden gemeinhin als die wichtigsten Faktoren für ein verstärktes Zusammenwachsen der europäischen Anleihemärkte angeführt.

Im vorliegenden Beitrag untersuchen wir die Faktoren, die der Integration der Anleihemärkte zugrunde liegen, genauer. Aufgrund welcher Mechanismen hat sich die Substituierbarkeit der Staatsanleihen in der WWU erhöht, was zu dem gut dokumentierten stärkeren Gleichlauf der Renditeentwicklung geführt hat? Inwieweit lässt sich die stärkere Integration auf den Wegfall von Wechselkursänderungen und -risiken, die Globalisierung der Kapitalströme und schließlich auf technische Neuerungen bei der Preisfindung zurückführen? Dabei vergleichen wir die Ergebnisse für die Länder des Euro-Währungsgebiets mit zwei Kontrollgruppen: Diese bestehen zum einen aus den Vereinigten Staaten und dem Vereinigten Königreich, zum anderen aus den deutschen Bundesländern. Die angelsächsischen Anleihen geben Aufschluss über die globale, nicht direkt mit der Einführung des Euro zusammenhängende Dimension der Verflechtung der Anleihemärkte. Der einzigartige Datensatz zum Markt für Anleihen der deutschen Bundesländer ermöglicht die Analyse der Integrations-tendenzen in einer langjährigen "Währungsunion". Schließlich nehmen wir eine Unterscheidung zwischen Anpassungen im niedrig- und hochfrequenten Bereich vor und führen Gründe dafür an, warum sich technische Neuerungen insbesondere in relativ hochfrequenten Renditekorrelationen niederschlagen dürften.

Das erste interessante Ergebnis betrifft die Entwicklung der Anleiherenditen im niederfrequenten Bereich, die sich einander nicht nur in den Ländern des Euroraums angeglichen hat, sondern auch in Großbritannien, den deutschen Bundesländern und in etwas geringerem Umfang den USA. Diese allmähliche Zunahme im niederfrequenten Bereich setzte bereits Anfang bis Mitte der 1990er Jahre ein. Etwa im Jahr 1999 waren die Renditen in der

WWU bei niedriger Frequenz nahezu perfekt integriert. Dabei scheinen Wechselkursfaktoren eine wichtige Rolle für diese Konvergenz hin zur der WWU gespielt zu haben.

Wir weisen nach, dass die Berücksichtigung des Wechselkursfaktors durch den Einsatz von Spreads von Swapsätzen die gemessene Integration in den Ländern der WWU vor Einführung des Euro deutlich höher liegt. So trugen neben dem Wechselkurs auch andere Faktoren zu diesem Anstieg der Integration im niederfrequenten Bereich bei, was sich unter anderem am Beispiel der deutschen Bundesländer zeigt. Vertiefte Kapitalmärkte, eine stärkere Standardisierung der Anleihen und größere internationale Kapitalflüsse liefern eine Erklärung für die niedrigfrequente Integration in Deutschland.

Als zweite wichtige Erkenntnis lässt sich festhalten, dass sich bei Betrachtung von Tagesfrequenzen ein völlig anderes Muster ergibt. Im Jahr 2000 stieg die Korrelation der Renditen in den Ländern des Eurogebiets sprunghaft an. Dies lässt sich jedoch auch für das Vereinigte Königreich und die USA nachweisen. Dagegen blieb die Integration im Hochfrequenzbereich bei den Anleihen kleiner deutscher Bundesländer bei nahezu null. Der tägliche Zuwachs lässt sich auf technische Innovationen im Anleihehandel (elektronische Handelsplattformen) zurückführen, die zu transparenteren Preisen und einem erhöhten Wettbewerb bei gleichzeitig geringeren Transaktionskosten führen. So zeigen Strukturbruchtests zum Zeitpunkt der Einführung der Plattform Eurex-Bonds einen starken Bruch für das Vereinigte Königreich, die USA und den Euroraum an. Die Anleihen deutscher Bundesländer werden dagegen in der Regel nicht über elektronische Handelsplattformen gehandelt und sind daher weniger gut integriert. Bei den wenigen Länderanleihen, die dort gehandelt werden, stellt sich das Integrationsniveau ähnlich dar wie bei den anderen Anleihen im Euro-Währungsgebiet.

Contents

1	Introduction	1
2	Empirical approach	5
3	Results	8
3.1	Main findings	8
3.2	The role of the exchange rate	14
3.3	German Länder	15
3.4	Robustness	17
4	Conclusions	18
	References	18
A	Main appendix	22
A.1	Figures	22
B	Interest rate parity and bond market integration	29
C	Robustness check: OLS regressions	32
C.1	Main results	32
C.2	Further robustness checks	37

List of Tables

1	Breakpoint high frequency	28
2	Breakpoint low frequency	28
C-1	Breakpoint	43

List of Figures

1	Beta EMU	9
2	Beta UK	10
3	Beta US	11
4	Break point test	12
5	Beta Länder	15
6	Beta large Länder bonds	17
A-1	Beta EMU swap adjusted	22
A-2	Beta UK swap adjusted	23
A-3	Beta US swap adjusted	23
A-4	Variance of beta EMU	24
A-5	Variance of beta EMU	24
A-6	Yield dispersion EMU not swap adjusted	25
A-7	Yield dispersion EMU swap adjusted	25
A-8	Beta EMU low frequency	26
A-9	Beta EMU low frequency swap adjusted	26
A-10	Beta EMU high frequency	27
A-11	Beta EMU high frequency swap adjusted	27
C-1	Beta EMU OLS	33
C-2	Beta EMU OLS swap adjusted	34
C-3	Beta UK OLS	35
C-4	Beta US OLS	36
C-5	Beta Länder OLS	36
C-6	Beta US not swap adjusted	37
C-7	Beta UK not swap adjusted	38
C-8	Beta EMU	38
C-9	Variance beta EMU	39
C-10	Beta bid-ask EMU	39
C-11	Beta EMU bid-ask	40
C-12	Beta UK bid-ask	40

C-13 Beta US bid-ask	41
C-14 Beta EMU Newey-West	41
C-15 Beta EMU Newey-West	42
C-16 Break point test EMU	42
C-17 Break point test US, UK	43
C-18 Constant EMU	44
C-19 Beta EMU disaggregated	44
C-20 Beta EMU disaggregated swap adjusted	45

Sovereign bond market integration: the euro, trading platforms and globalization¹

1 Introduction

Capital markets have broadened and widened significantly in the 1990s and the early parts of this century both on a global scale as well as in Europe. The integration of international capital markets is vital for the efficient allocation of capital, which enhances economic growth and contributes to the sharing of risk on an international, regional as well as sectoral level.² Two financial markets can be considered fully integrated if identical assets that are traded on two different markets have identical prices at a time.³ More specifically, sovereign bond markets can be regarded as integrated if those bonds that are close substitutes, yield the same expected return and consequently their prices tend to fluctuate together. The advent of the European Economic and Monetary Union (EMU) is regarded as a crucial driving force of European financial integration. The abolition of currency risks with the introduction of the euro together with increased bond standardization are widely seen as the main factors behind increased European bond market integration.

In this paper, we take a closer look at the factors driving bond market integration. Which mechanisms have rendered government bonds in EMU closer substitutes, that has led to the documented increase in co-movements of yields (Baele, Ferrando, Hördahl, Krylova, and Monnet 2004)? What can be attributed to the elimination of exchange rate changes, exchange rate risk, globalization of flows and finally technological improvements in price discovery processes? We do so by comparing the result of euro area countries with two

¹Authors: Alexander Schulz, Deutsche Bundesbank, email: alexander.schulz@bundesbank.de and Guntram B. Wolff, Deutsche Bundesbank, University of Pittsburgh, email: guntram.wolff (AT) gmx.de. We thank Jörg Breitung, Carsten Burhop, Ben Craig, Stefan Gerlach, Heinz Herrmann, Malte Knüppel, Stefan Reitz, Christian Schumacher, and the research seminar participants at the Bundesbank for many helpful comments. All remaining errors are ours. The opinions expressed in this paper do not necessarily reflect the opinions of the Deutsche Bundesbank or its staff.

²See Levine (2005) for the finance-growth nexus and Sorensen and Yosha (1998) and Yosha, Kakemli-Ozcan, and Sorenson (2001) for the importance of capital markets in risk sharing.

³A further criterion is the equal access to instruments or services, i.e. to bank loans. As this is of minor importance for developed countries' sovereign bond markets, we do not discuss this dimension of integration here.

control groups: the US and the UK on the one hand and the German states (Länder) on the other hand. Anglo-saxon bonds reflect the global dimension of bond market integration not directly related to the creation of the euro. The unique data set on the German sub-national government bond market allows to assess integration trends in a long-standing "currency union". Finally, we distinguish low and high frequency adjustments. This allows us to disentangle the influence of fundamental factors, which drive the evolution of yields in the long run, from innovations affecting the short term dynamics of international bond markets. The latter may have significant effects on portfolio allocations and thus can have a substantial impact on financial stability.⁴ Furthermore, a more liquid secondary market with faster price discovery will reduce the issuer's cost in the primary market.

The first important finding is that low-frequency bond yield dynamics converged not only in euro area countries but also in the UK, the German states (Länder) and to a somewhat lesser extent in the US. This gradual increase on a low frequency started already in the early to mid 1990s. At around 1999 yields look almost perfectly integrated at a low frequency within the EMU. Exchange rate factors seem to be an important determinant of this convergence. We show that controlling for the exchange rate through swap rate spreads considerably increases integration for EMU countries before the introduction of the euro. Factors beyond the exchange rate surely also contribute to this rise in low frequency integration. In a long term trend, capital markets have become more open, both in industrialized and in developing countries. A major contributing factor is the removal of administrative barriers (Kaminsky and Schmukler (forthcoming), Obstfeld and Taylor (2004)). Deeper capital markets, greater bond standardization as well as larger international capital flows are reflected in low frequency integration within Germany.

Our second major result is that on a high frequency a very different pattern of integration emerges. A strong jump in the co-movement of yields is observed during the year 2000 for the euro area countries. However, similar patterns can also be found in the UK and the US. In contrast, the integration level is almost zero for small German Länder bonds. The pronounced increase at a high frequency can be attributed to technical innovations in bond trading (electronic trading platforms) which promote price transparency and competition while

⁴Noticeably, in the recent financial market's turmoil the rush for safe and liquid assets brought the sovereigns' bond market integration to a test.

reducing transaction costs. Indeed, breakpoint tests exhibit a strong break for the UK, US as well as the euro area around the date of the introduction of the Eurex-Bonds trading system. In contrast, the German Länder bonds are in general not traded on electronic platforms and therefore not well integrated. For those few Länder bonds that are traded, the integration level is comparable to other euro area sovereign bonds.

Our paper relates to an important literature on bond market integration in EMU. Pagano and Thadden (2004) note that euro area sovereign and private bond markets have become more integrated in the wake of monetary unification. They note that governments laid the institutional framework for an integrated market, but that integration was also significantly promoted by the response of financial intermediaries for example in the form of pan-European trading platforms. Baele, Ferrando, Hördahl, Krylova, and Monnet (2004) and several ECB publications (e.g., European Central Bank (2007)) investigate co-movements of sovereign bond yields in EMU with the German benchmark. Using monthly yield data, the authors show that EMU countries' yield changes follow more closely the changes of the benchmark country, Germany, after 1999. Moreover, this literature documents a strong decrease in yield spreads in the run-up to EMU. Barr and Priestley (2004), using a conditional asset pricing model in the spirit of Bekaert and Harvey (1995), find that national sovereign bond markets are partially integrated into the global market, but market idiosyncratic risk remains.⁵

The present paper marries the literature on bond integration with a small but growing literature on electronic trading and its implications for financial systems. Sato and Hawkins (2001) provide an overview of the issues. The literature focuses on equity markets as they were the first to introduce electronic trading beyond the posting of indicative quotes. Grünbichler, Longstaff, and Schwartz (1994) find that screen traded Dax futures lead floor traded Dax stocks by a larger amount than in markets, where spot and futures are both traded on the floor. They argue that this is consistent with the hypothesis that screen trading accelerates the price discovery process. Kempf and Korn (1998) investigate the effect of screen based versus floor based trading systems on different measures of market integration of the Dax future and the the Dax index. They find that integration is higher in electronic screen based systems and argue that this effect is driven by lower market frictions which facilitate ar-

⁵In an update to that study, Lamedica and Reno (2007) broadly confirm their findings.

bitrage trading. Regarding fixed income markets, to our knowledge no study so far has investigated the impact of electronic interdealer trading systems on sovereign bond market integration. Gravelle (2002) notes that electronic trading systems have increased centralization in government securities markets allowing dealers to solicit quotes from a number of dealers at one moment on one screen. Cheung, de Jong, and Rindi (2005) study the microstructure of the MTS global market bond trading system. They find that Euro MTS and country MTS markets are, despite their apparent fragmentation, closely connected in terms of liquidity.

Finally, our paper is also related to the literature on sovereign bond spreads in Europe and Germany. This literature documents, on the basis of low frequency data, that sovereign bonds of EMU are still not considered to be perfect substitutes as spreads remain. Imperfect yield correlations can therefore not automatically be ascribed to imperfect bond market integration but also reflect imperfect substitutability.⁶ Indeed, recently one has observed a remarkable increase in spreads of EMU countries relative to Germany.⁷ Few commentators believe that this increase is a sign of a lowering market integration. In fact, fundamental risk factors are found to matter in EMU (Beber, Brandt, and Kavajecz (2006), Hallerberg and Wolff (forthcoming)) as well as in Germany (Heppke-Falk and Wolff 2008) while the importance of liquidity factors has declined with EMU (Codogno, Favero, and Missale (2003), Pagano and Thadden (2004), Gómez-Puig (2006)). For the pre-EMU period, Favero, Giavazzi, and Spaventa (1997) find that long-run spread movements in Europe are determined by exchange rate factors, while country specific shocks drive short-term cycles.

The remainder of the paper is structured as follows. The next section introduces our approach to measuring integration at high, medium and low frequency and presents the data. Section 3 discusses the results. The last section concludes.

⁶This point was already made by Bekaert and Harvey (1995) in the context of international bond market integration.

⁷"Trichet warning over bond spreads in Europe" Financial Times, March 6, 2008.

2 Empirical approach

A useful starting point for an investigation of bond market integration is the covered interest parity condition (CIP). It states that two, otherwise equivalent, bonds issued in two different currencies should have the same yield expressed in one currency. Deviations from CIP measured with sovereign bond yields of two countries can be attributed to four points: different default risk of the issuer, different liquidity conditions of the bonds, different characteristics of the bonds and finally imperfect market integration preventing or slowing arbitrage trading to eliminate yield differences. More formally, in logarithms,

$$i_{j,t,T} = i_{g,t,T} + \log(1 + d_t) + f_T - s_t + \varepsilon_t \quad (1)$$

the interest rate i of country j 's bond at time t with maturity T should be equivalent to the benchmark bond of country g plus a term reflecting relative default and liquidity risk $\log(1 + d_t)$, plus the appreciation/depreciation of the currency as contracted in forwards, $f_T - s_t$, plus a residual term, which would be a sign of imperfect integration due to broadly defined transaction costs.

In the absence of exchange rate variation and constant relative risks an innovation in the interest rate of the benchmark country should be fully reflected in the yield of the other country's bond if the markets are fully integrated. In other words, yields should perfectly co-move. We test for co-movement of the yields by performing forward looking rolling window regressions of yields of EMU countries, the US, UK and the German Länder on the yield of the German central government bond, the Bund. The rolling-window technique allows to plot the evolution of the integration measure since the beginning of our sample.

Integration levels can be different at different time horizons. For example, it is more likely that large and persistent yield innovations get incorporated into other yields at a long horizon, whereas it is possible that short-term innovations cannot immediately be reflected into yields due to transaction cost, information problems and the like. To capture the notion that yields might adjust at different speeds, we proceed in two steps.

In a first step, we use the linear band-pass filter of Baxter and King (1999) to extract different frequencies of the data. We define three different frequencies: A high frequency equivalent to 2-3 days, a medium one of 3-10 days and a low frequency of 10-30 days. The band pass filter is an ideal filter in that it

extracts only the specified frequencies.⁸ Moreover, the filter delivers stationary series if the order of integration of the original series is two or less.⁹ We can think of the high frequency series as a series of very short run shocks that do not determine the behavior of yields beyond 3 days. Low frequencies, in turn, capture long run movements of yields in the course of a month.

In a second step, we use the filtered series to perform a rolling window regression. More precisely, we estimate:

$$i_{jt}^f = \alpha_{jt} + \beta_{jt}i_{gt}^f + \varepsilon_{jt} \quad (2)$$

where i_{jt}^f is the filtered yield of country j at time t and i_{gt}^f is the filtered series of the German Bund. The regressions are performed on a forward looking window of 500 days which is shifted forward by 10 days. This results in a time series for the estimated coefficients.

If the bond markets are perfectly integrated, we would expect β to be one. Thanks to the extraction of the different frequencies, we can assess the evolution of integration levels in the short, medium and long term. Perfect high frequency integration would imply that any short run innovation to the benchmark yield is reflected in the yield of the respectively compared country on the same or subsequent day. In perfectly integrated markets, we expect integration to be perfect in all frequencies, i.e., any movement of the Bund yield is also visible in the yield of country j .

High frequency integration presupposes a sufficiently high degree of information transparency and operational capacities available to market participants. Adjusting the relative prices of government bonds requires a bilateral price discovery process. Hence, the simultaneous availability of binding quotes is a crucial device for high frequency integration.¹⁰

At a lower frequency, in turn, market participants can more easily incorporate information, resulting in a higher level of integration. Long run movements of prices can be measured more easily on a low frequency and be priced accordingly. Long term convergence towards the single European currency should be

⁸The filter is in fact constructed by minimizing the distance of the frequency response function and the ideal frequency response function. Visual inspection of actual vs ideal showed a good fit in all cases.

⁹We tested for unit roots and could not find an order of integration higher than two.

¹⁰Indicative quotes or historic transaction prices can only give an orientation about the fair market price and determining the correct instantaneous price, e.g. requesting quotes from dealers by telephone, is time consuming.

reflected primarily in low frequency yields. The elimination of exchange rates through the euro should lead to an increase of the integration level. This can be achieved already years before the actual introduction of the euro, when markets formed beliefs about participants and conversion rates. Overall, we therefore expect β to be higher at a low frequency as compared to a high frequency. Moreover, we expect technological advances to have a strong impact on high frequency integration, while they should be of less relevance to low frequency integration.

A deviation of β from one can be due to imperfect integration but also to the fact that liquidity conditions, default rates and exchange rates are related to the yield of the benchmark bond. It is therefore important, to control for these factors. To control for the influence of varying exchange rates, we repeat the above exercises with yields adjusted by the interest rate swap spread between the currency in question and the German swap rate.¹¹ In principle the swap adjusted data incorporate exchange rate changes as contracted in forward rate agreements. However, premia for the volatility of interest and exchange rates as well as for credit risk persist. Therefore, even swap adjusted data could show an increase in integration with the introduction of the euro.

Exchange rate volatility might play a smaller role at a low frequency, compared to higher frequencies, since short term variations are likely to cancel out over a certain period. Risk premia for time varying volatility are thus less important, especially in the European ERM system of the 1990s, which defined tolerance bands for exchange rate fluctuations. Therefore, swap rate adjustments, which do not adjust for volatility risk but capture long-run exchange rate evolutions, lead to higher measures of low frequency integration. In turn, for high frequency integration, they are less suited since they cannot capture short term volatility variations which drive a wedge between yields.

Moreover, we present robustness checks to capture time-varying liquidity risks. To do so, we include the bid-ask spread as an additional explanatory variable in the regression. With increasing liquidity risk, we expect the yield of the respective country to go up. Unless liquidity risk is orthogonal to the benchmark yield, the estimated β coefficient could be affected.

To get a clearer picture of structural breaks in the degree of bond market integration, we perform the Quandt-Andrews breakpoint test to test for

¹¹See equation B-6 in the appendix for a formal derivation. Within EMU no swap adjustment are necessary.

changes in the coefficient β . This test is basically a rolling Chow (1960) break-point test (Andrews (1993) and Andrews and Ploberger (1994)). The basic test statistic is an F-value, which is computed as a normalized difference between the constraint residual sum of squares and the unconstrained residual sums of squares of the two sub-samples. A high F-value therefore indicates a strong structural break.

Our data sample covers the period from 1992 to 2007. We use standard benchmark bond yields for EMU countries, the UK and US with approximately ten years to maturity at a daily frequency.¹² The yields are computed from daily averages of the respective benchmark bond's price. For the exchange rate adjustment, we use standard interest rate swap rate spreads for a ten year horizon. All these data are taken from Thomson Financial Datastream. To control for liquidity, we use outstanding volume and suitable bid/ask-spreads, both from Bloomberg. With respect to the German Länder, we revert to the data-set of Schulz and Wolff (2008), which comprises master data of all bonds issued by the Länder since 1992. Single bonds' yields as well as the yields of matching Bunds are taken from Thomson Financial Datastream.

3 Results

3.1 Main findings

Figure 1 shows the evolution of the average integration coefficient β from equation (2) for the EMU countries. As can be seen, at a low frequency, the average correlation of yields of EMU was hovering around the perfect integration level since the early 1990s. In contrast, for medium frequencies, the integration level is around 0.8, increasing only after 1999. The sharpest increase in the integration level can be observed for high frequency data. Here, the average integration level is around 0.5 during the 1990s but increases abruptly as soon as data from late 2000 enter the forward looking estimation window.¹³

Since average EMU data might conceal a significant amount of heterogeneity across EMU countries, we also provide the variance of β coefficients at each point in time (Figure A-4). The heterogeneity across countries is higher at the

¹²We restrict our analysis to the EMU 12. Luxembourg does not have traded debt and is therefore excluded.

¹³As the estimation is done on a forward looking window, observations of fall 2000 enter show up in the results as of summer 1999.

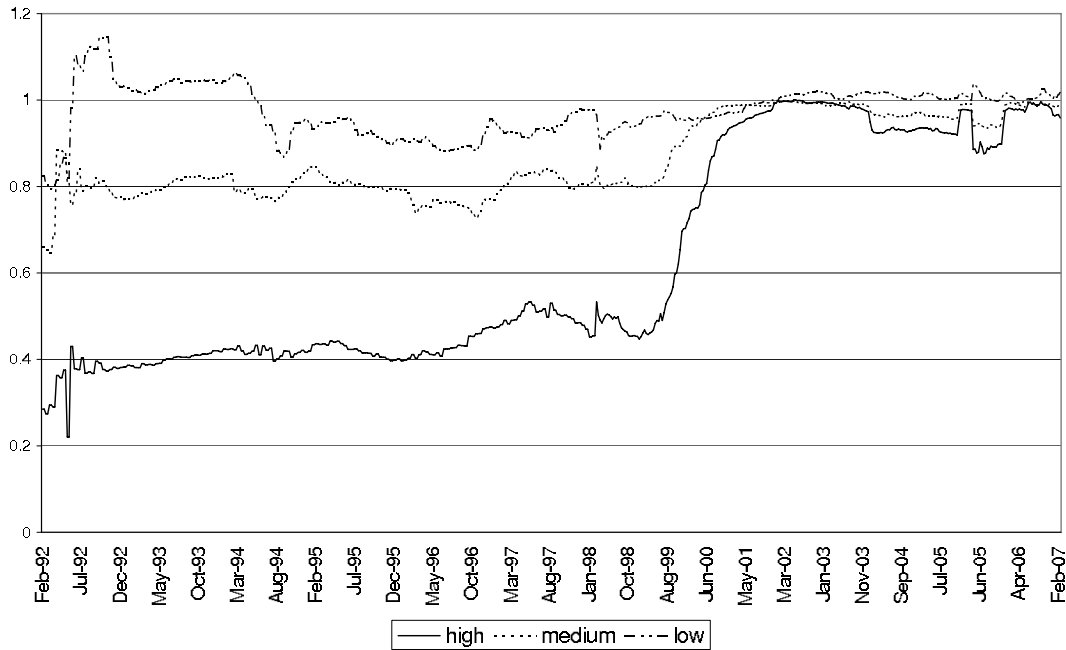


Figure 1: Evolution of average β s of EMU countries, estimated on a 500 day forward looking rolling window. Source: Thomson Financial Datastream, own calculations.

high frequency than at the low and medium frequencies. The high frequency heterogeneity almost completely vanishes as of 2002. For low frequency data we observe a generally lower level of variance, which is almost zero with the start of EMU. Looking at individual countries, Figure (A-8) shows that in the early to mid 1990s some countries had significantly deviating β s, while as of late 1997 there appears to be complete convergence.¹⁴ At high frequencies (Figure A-10), we observe a strong jump for most of the countries as also found in the average data.

Performing the same exercise with data from the UK relative to Germany yields a remarkably similar picture (Figure 2). Again, low to medium frequency integration levels are high throughout the sample, while high frequency integration increases steeply when data from late 2000 enter the estimation sample.

Finally, we turn to the USA (Figure 3). Here, the picture is similar in the sense that there appears to be a strong increase in the late 1990s. Moreover, we also observe a gradual increase throughout the 1990s at a low and medium frequency integration level.

Overall, the results for all regions, the EMU, UK and the US, show a small

¹⁴With the obvious exemption of Greece, which joined the EMU only in 2001.

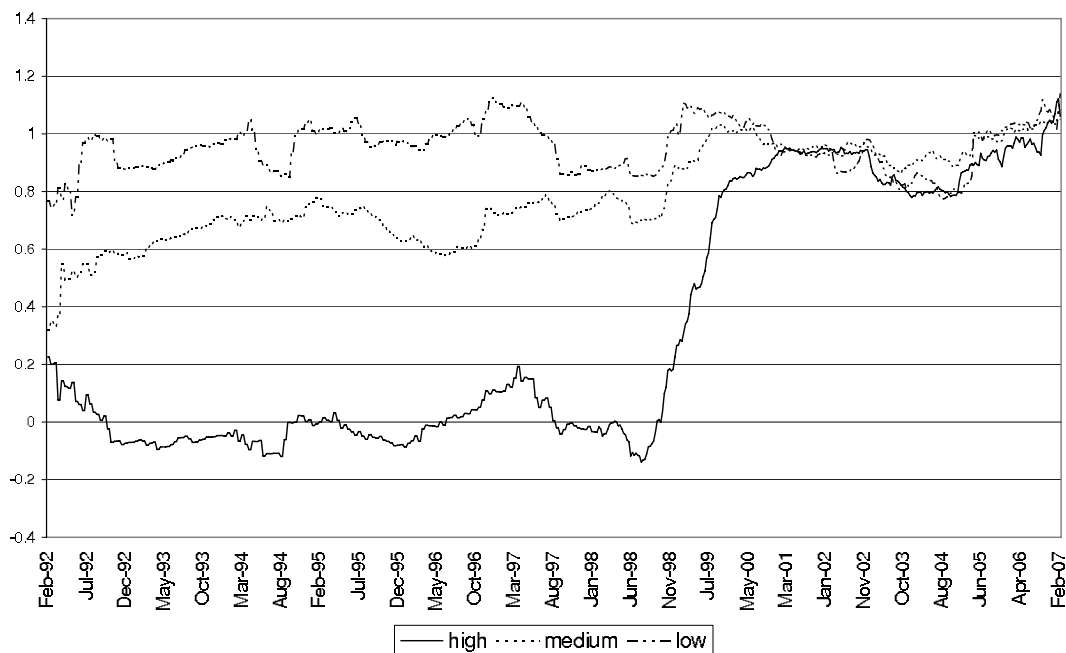


Figure 2: Evolution of β of the UK, estimated on a 500 day forward looking rolling window. Source: Thomson Financial Datastream, own calculations.

increase in the low frequency integration level in the course of the 1990s.¹⁵ In contrast, at a high frequency, integration starts to increase steeply in late 1998, when the first observation of late 2000 enter our forward looking regression window. Hence, high frequency integration only picks up almost two years after the introduction of the common European currency. Moreover, integration with respect to Germany's Bund picks up simultaneously in the UK. With respect to the US, the pattern of increasing integration is similar and can be observed in parallel at low frequencies.

In the high frequency integration, regressions clearly hint at a regime shift in the year 2000. To better capture the exact timing of the jump, we perform a Quandt-Andrews unknown breakpoint test. The test provides an F-statistic for a structural break of the β coefficient in time. The higher the F-value, the greater is the imposed constraint of a model without a break. Figure 4 depicts the F-statistic for the average of EMU countries, the UK and the US. For all three regions, there is a striking peak in the F-statistic around October 2000. Thus high frequency integration jumped at that point in time to a new level. In the EMU as well as in the UK, the integration parameter subsequently is

¹⁵We performed the Quandt Andrews unknown breakpoint test for low frequency data. The largest breakpoint is found for most EMU countries well before the introduction of the euro. The statistics are given in Table 2.

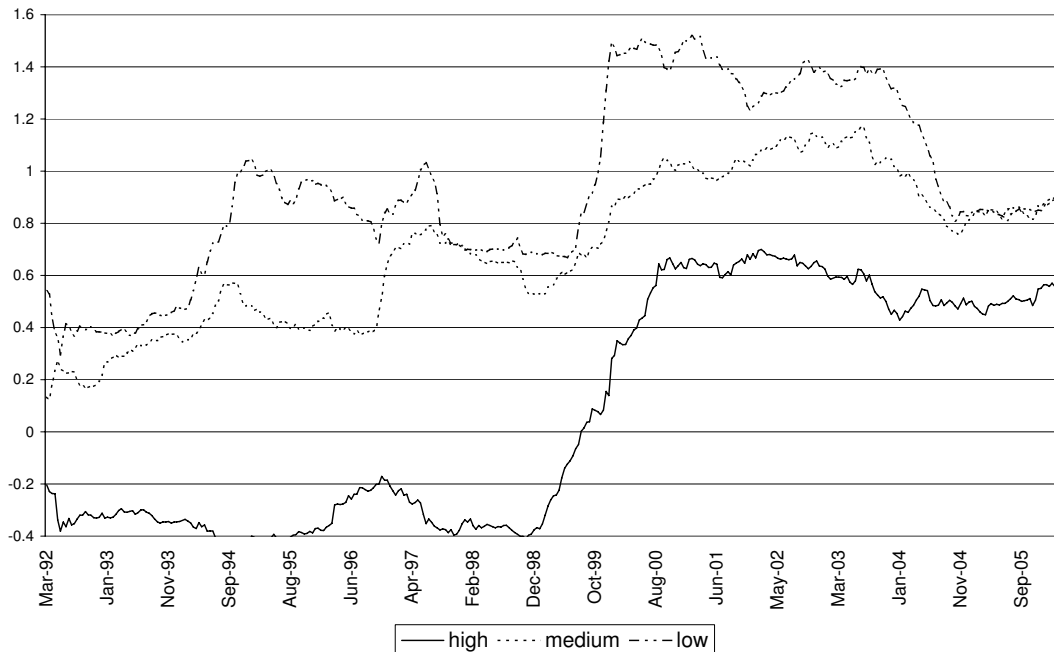


Figure 3: Evolution of β of the US, estimated on a 500 day forward looking rolling window. Source: Thomson Financial Datastream, own calculations.

at one. This indicates full integration, i.e., Bund yield innovations are fully mirrored in other government bond yields. The lower level of integration with the US can be attributed to a lack of synchronization in trading hours.

The short interval at which the integration level jumps suggests a change in price discovery mechanisms around October 2000. Traditionally, bonds were traded over the counter, mainly in telephone trades. Even though prices were posted on electronic information systems like Reuters, they were mainly either indicative quotes or historic prices. Moreover, traders usually did not have access to multiple tradable quotes at one point in time. A potential reason for this jump are electronic trading platforms. In fact, already Hartmann, Maddaloni, and Manganelli (2003, p. 195) suspect that platforms seem to "...have had a significant, positive impact on the integration of government debt markets in the euro area...".

In October 2000, Eurex-Bonds, an electronic bond trading platform in Frankfurt, became functional. It is one of the largest trading platforms for Bunds (Deutsche Bundesbank 2007) and offers real time binding quotes to its members, permitting immediate access to multiple dealers. This increases transparency and thus promotes price discovery, leading to more uniform reactions of government bond yields to innovations. In June 2000 BrokerTec went into operation, which offers a hybrid solution combining voice and electronic

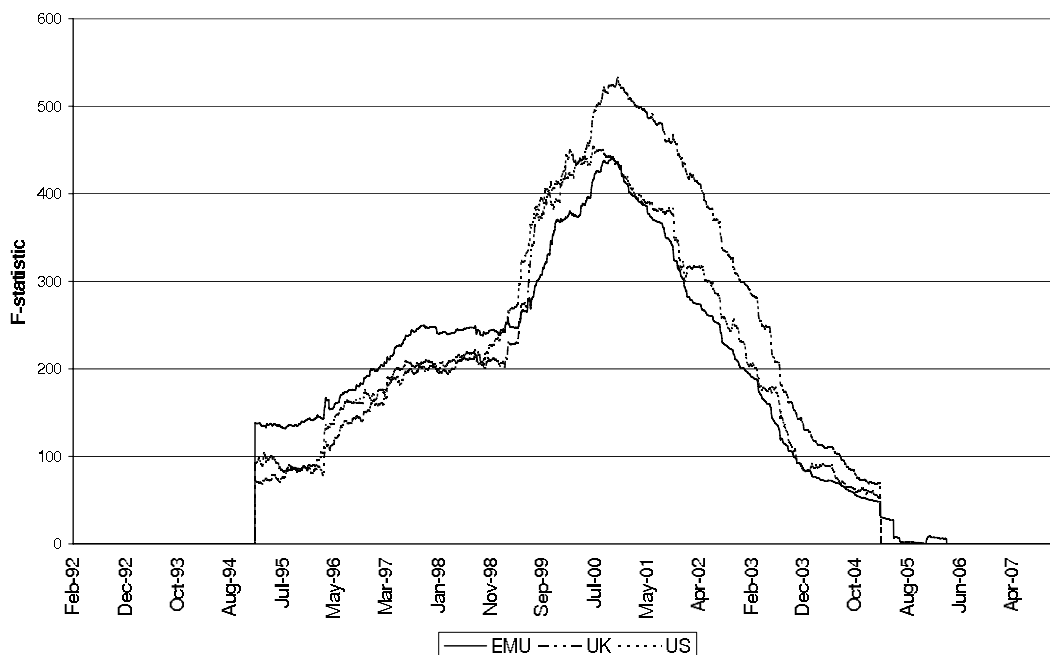


Figure 4: F-statistic from Quandt-Andrews unknown breakpoint test for EMU, US and UK (high frequency integration).

trading, which was able to attract trading mainly in US-Treasuries.

Other electronic trading platforms also went into operation around the turn of the millennium. Most notable is the MTS platform, originally created to trade Italian government bonds, which was founded in 1988 and privatized in 1997. In the meantime, MTS has evolved into a trading network. In April 1999, Euro MTS went into operation, covering European benchmark bonds. However, the MTS system is fragmented, as only the largest and most recent bonds are traded on the Euro MTS platform.¹⁶ To trade the full range of e.g. German bonds, one has to take MTS Germany (launched in April 2001) into consideration. From the perspective of price discovery, inter-dealer systems as MTS and Eurex-Bonds differ significantly from customer related trading platforms like BondVision (part of the MTS group, which started in 2001) or TradeWeb (1998), even though the latter typically record higher turnover.¹⁷ While wholesale markets provide tradable quotes, investors at systems aiming at customers offer prices only at explicit requests. In spite of the success of electronic trading platforms, the majority of trades is still arranged by tele-

¹⁶It appears to be, that the main liquidity is with the national MTS platforms; e.g., a German ten year on the run Bund might not be traded on certain days on Euro MTS. See www.mtsdata.com/content/data/public/ebm/bulletin/.

¹⁷Recently, investors have pressed to gain a direct access to the inter-dealer MTS systems.

phone. In 2006 German federal paper worth more than 18,000 billion euro was traded on the telephone, while more than 400 billion euro worth were exchanged on the different systems of MTS (including the platform BondVision) and the turnover on Eurex-Bonds was slightly above 200 billion euro.¹⁸

During the 1990s, capital markets and especially bond markets significantly broadened and deepened, globally as well as in Europe. Global issuance activity picked up in the course of the 1990s, peaking in 1999 at a level of 3,355 billion US-Dollar. In the US and both euro area countries and other European countries issuance private sector issues were the main drivers of growth. In the euro area private sector net issues increased from 7 billion US-Dollar (1994) to 120 billion US-Dollar (1999).¹⁹ A major factor for both the growth and the subsequent decline of issuances was the debt-financing of the technology and telecommunication sectors.²⁰ The German Länder, our control group for bond market integration in a long standing currency union, exhibit a comparable pattern of bond market utilization. Thus, the emergence of electronic trading platforms, which have a significant effect on bond market integration, can be seen in the larger picture of a broadening and deepening global bond market. Furthermore, investors increasingly engaged in foreign securities, which might have provided further support of a more competitive and transparent bond pricing mechanism.²¹ Finally, the technological progress of telecommunication has made modern electronic platform feasible in the late 1990s.

All in all, the strong increase in high frequency integration observable in EMU countries as well as the UK and the US around the third quarter of 2000 suggests a change in the speed at which prices are set. This has led to a greater international co-movement of yields. Based on a variety of tests, we attribute this jump to electronic trading platforms that have become functional around that time.

¹⁸In 2006, less than 2% of trades were executed on stock exchanges (Deutsche Bundesbank (2007), principle of double-counting).

¹⁹According to the Bank for International Settlements debt securities database.

²⁰Furthermore, European corporations substituted bank loans, the typical form of European debt finance, with direct market debt (Pagano and Thadden 2004).

²¹A major aspect of European cross border investments in the 1990s has certainly been the so called convergence trade prior to the introduction of the euro (Deutsche Bundesbank (2002)).

3.2 The role of the exchange rate

To get a deeper understanding of the importance of exchange rate fluctuations for bond market integration, we adjust all yields (except for Germany) by the respective swap spread to Germany.²² With the thus transformed yield data, we perform the frequency-filtering as for the original series and re-estimate the integration equations.

Figure A-1 - A-3 in the appendix plot the evolution of the estimated β s. Again, we observe a strong increase in high frequency integration, while for low and medium frequency integration, the increase appears to be small and gradual. Hence, the pictures for EMU and UK bond market integration look very similar to the original findings. Exchange rate changes thus do not appear to influence the measured integration. The qualitative evolution for the US is similar, though to a lesser extent. This finding is consistent with Bekaert and Harvey (1995), who cannot reject the hypothesis that integration and exchange rate changes are not connected.

Nevertheless, exchange rate adjustments were a major determinant of spreads pre-EMU. This can be seen by plotting the dispersion of adjusted and non-adjusted yields (see Figure A-6 and Figure A-7). Indeed, adjusted yield differences are only a third of the unadjusted values. Regarding integration, the variance of estimated integration coefficient β s is lower (Figure A-5). Especially at a low frequency, we find that adjustment of yields matters for the dispersion of estimated β s. Figures A-8 and A-9 plot the evolution of the estimated low frequency β s for non-swap adjusted and swap adjusted 10 EMU countries. The range of estimated low frequency β s was roughly between 0.8 and 1.2 for swap adjusted data, while it was between 0.5 and 2.5 without the swap adjustment in the early to mid 1990s. As can be seen, the heterogeneity of estimated β s is much larger in the non-adjusted data, especially in the early parts of the sample. Our finding that exchange rate factors matter for low frequency integration confirms the result of Favero, Giavazzi, and Spaventa (1997). However, even after controlling for exchange rates by swap rates, we observe a convergence in low frequency β s to close to one at around January 1999. This probably reflects the elimination of the exchange rate risk. However, it is worthwhile to notice that the integration level further increases after

²²We use ten year swap rates. In EMU there is only one swap rate, thus no adjustment is necessary in that sub-sample.

January 1999, which might reflect advances of the technological possibilities.²³

All in all, exchange-rate adjustments as measured by swap-rate differences, have an effect on long run yield convergence. For bond market integration as measured by short to medium term yield innovations, swap adjustment play a negligible role.

3.3 German Länder

As an additional control group to the EMU countries, we investigate closely the German Länder. The German Länder faced a common legal framework already in the early 1990s and therefore help to disentangle legal harmonization in EMU countries from other trends. Moreover, the bonds considered were all issued in the same currency at a time, the Deutsche Mark and subsequently the euro.

Figure 5 plots the estimated integration coefficients for the German Länder. High frequency integration levels remain at very low levels throughout the

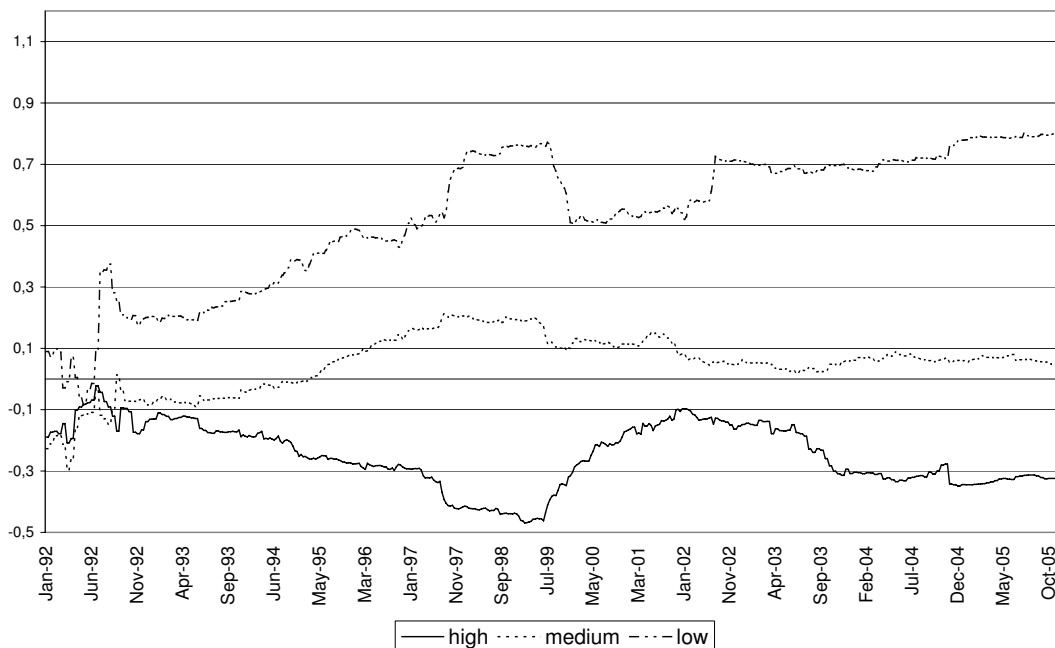


Figure 5: Evolution of average β s of German Länder. Source: Schulz and Wolff (2008), Thomson Financial Datastream, own calculations.

²³The long-run yield convergence is also reflected in regression B-8's constant α , which measures the average growth difference of yields in the 500 day estimation window. As Figure C-18 shows, in the period of 1992 to 1999, the α for the unadjusted yields is persistently negative at a low frequency, capturing pre EMU yield convergence. In contrast, the constant of the adjusted yields fluctuates around zero.

sample. We attribute this low level to the fact that most Länder bonds are quite small in size. This lack of liquidity reduces the incentives to adjust prices relative to the Bund by selling or buying. At a lower frequency, however, we observe a continuous increase in integration levels. This suggests that larger movements of Bund yields are increasingly reflected in Länder yields.

The increase in low frequency integration mirrors the increase of low frequency integration in EMU. This suggests, as did the increase of the UK integration, that the role of the exchange rate for bond market integration is at best an indirect one. The absence of exchange rates in Germany precludes exchange rate risk as a prime determinant of integration. However, it is possible that through the elimination of the exchange rate of Germany towards the other EMU countries, international investors increased their engagement in the German Länder bond market thereby leading to greater price convergence.

If we look more closely at large bonds, that have the potential to be traded on electronic trading platforms, we find a sample of roughly 40 bonds that exceed the threshold of 1 billion euro, which is required by Eurex-Bonds, only 3 exceed the value of 2 billion euro required by EuroMTS. We pool the data for the bonds between 1 and 2 billion euro and the one for more than 2 billion euro and compare the yield of each individual bond with a comparable benchmark bond of the Bund. Figure 6 plots the evolution of the average β for the two groups. As can be seen, the integration level of the second group with a volume of more than 2 billion euro each exhibits a higher level of integration. This suggests that liquidity is important for integration. However, we also observe a clear increase in the integration level for the first group as of late 1998, when the first observations of late 2000 enter the estimation window. Thus, with the start of Eurex-Bonds, the correlation of yields of the Länder with the federal government bonds has increased from a low of 0.5 to 0.9 in 2003. This again suggests, that a prime motor of high frequency integration is the improvement of technological trading possibilities.

All in all, the German Länder bond market has seen a remarkable increase in integration with the Bund in the course of the last 15 years at a low frequency. At higher frequencies, however, integration levels remain very low. Nevertheless, for large bonds eligible for trading at electronic trading platforms, we can also measure a strong increase in integration levels around the time of the introduction of Eurex-Bonds. The vast majority of German Länder bonds are, however, too small to be traded in electronic platforms; their price



Figure 6: Evolution of average β s of large German Länder bonds. The first large bond was issued in 1996 ("Länder Jumbo"). Source: Schulz and Wolff (2008), Thomson Financial Datastream, own calculations.

discovery process is therefore too slow to show high frequency integration.²⁴

3.4 Robustness

We performed a number of robustness checks. To make our results more easily comparable with the paper by Baele, Ferrando, Hördahl, Krylova, and Monnet (2004), we regressed the difference of yields of country j on the difference of the German Bund's yield.²⁵ We use the first difference of yields (i.e., the day-to-day change) to capture fast adjustment of yields. Medium and low adjustment speeds are captured with 5 and 10 business days differences. Baele, Ferrando, Hördahl, Krylova, and Monnet (2004) use one month differences and thus capture very slow and long-run adjustments.²⁶ The results of this exercise are presented and discussed in depth in appendix C. The results are very

²⁴In the turmoil since summer 2007 market making in Länder bonds has been abandoned or the minimal required bid-/ask-spread has widened, hampering trade. In consequence, a sample of trades on MTS records practically no trades between September 2007 and May 2008.

²⁵In doing so, we abstract from any possible co-integration relationship as do the mentioned authors.

²⁶The results for 10 days and 22 business days differences look virtually identical. We therefore do not present 1 month differences.

much in line with the previously shown figures of frequency filtered data. We again observe a sharp increase of integration levels in the one day difference estimation around the time of the introduction of trading platforms. For lower frequencies, i.e., five and ten days differences, integration seems to increase gradually in the course of the 1990s.

We use the approach of simple rolling windows OLS regression to control for a variety of other factors that might influence integration. Most importantly, we include the difference of the bid-ask spread in the regressions as a control for time varying liquidity premia. Figure C-10 gives the average evolution of the estimated coefficient on the bid-ask spread, while Figure C-11 provides the estimation results of the integration coefficient after controlling for bid-ask spreads and swap adjustments. As can be seen, the inclusion of the bid-ask spread as a control variable does not alter the main results. Moreover, the effect of bid-ask spreads themselves becomes virtually absent in the mid-late 1990s. This is in line with previous findings in the literature that the role of liquidity measures has become smaller in EMU. Overall, the increase in integration levels with data from late 2000 entering the sample appears to be very robust.

4 Conclusions

The paper documents a gradual and often substantial increase in low frequency sovereign bond market integration in EMU, the UK, the US and the German Länder since 1992. At low frequencies equivalent to a range between 10 and 30 days, yields now almost perfectly co-move with the Bund in the groups of countries and states considered. The gradual increase can be attributed especially to increased international capital flows and greater standardization of bonds. Moreover, the euro had an impact on low frequency integration. At higher frequencies, especially at frequencies capturing day-to-day changes, integration levels were quite low during the 1990s and increased abruptly at around October 2000 in EMU countries, as well as the US and the UK. We argue that this sudden increase can be best explained by technological improvements in the form of electronic trading platforms. Exchange rates seem to play a negligible role for short term integration measures.

References

- ANDREWS, D. W. K. (1993): “Tests for Parameter Instability and Structural Change With Unknown Change Point,” *Econometrica*, 61(4), 821–856.
- ANDREWS, D. W. K., AND W. PLOBERGER (1994): “Optimal Tests When a Nuisance Parameter is Present Only Under the Alternative,” *Econometrica*, 62(6), 1383–1414.
- BAELE, L., A. FERRANDO, P. HÖRDAHL, E. KRYLOVA, AND C. MONNET (2004): “Measuring European Financial Integration,” *Oxford Review of Economic Policy*, 20(4), 509–530.
- BARR, D., AND R. PRIESTLEY (2004): “Expected Returns, Risk and the Integration of International Bond Markets,” *Journal of International Money and Finance*, 23, 71–97.
- BAXTER, M., AND R. KING (1999): “Measuring Business Cycles: Approximate Band-Pass Filters for Economic Time Series,” *Review of Economics and Statistics*, 81 (4), 575–93.
- BEBER, A., M. W. BRANDT, AND K. A. KAVAJECZ (2006): “Flight-to-Quality or Flight-to-Liquidity? Evidence from the Euro-Area Bond Market,” *NBER working paper*, 12376.
- BEKAERT, G., AND C. R. HARVEY (1995): “Time-Varying World Market Integration,” *The Journal of Finance*, 50(2), 403–44.
- CHEUNG, Y. C., F. DE JONG, AND B. RINDI (2005): “Trading European Sovereign Bonds: The Microstructure of the MTS Trading Platforms,” *ECB working paper*, No. 432.
- CHOW, C. (1960): “Tests of Equality Between Sets of Coefficients in Two Linear Regressions,” *Econometrica*, 28, 591–605.
- CODOGNO, L., C. FAVERO, AND A. MISSALE (2003): “Yield Spreads on EMU Government Bonds,” *Economic Policy*, 18(37), 503–32.
- DEUTSCHE BUNDESBANK (2002): “Capital Flows and the Exchange Rate,” *Deutsche Bundesbank Monthly Report*, January, 15–26.

- (2007): “Primary and Secondary Markets for German Public Sector Debt Instruments: Institutional Framework, Trading Systems and their Relevance for Germany as a Financial Centre,” *Deutsche Bundesbank Monthly Report*, July, 45–57.
- EUROPEAN CENTRAL BANK (2007): “Financial Integration in Europe,” .
- FAVERO, C., F. GIAVAZZI, AND L. SPAVENTA (1997): “High Yields: The Spread on German Interest Rates,” *The Economic Journal*, 107, 956–85.
- GÓMEZ-PUIG, M. (2006): “Size Matters for Liquidity: Evidence from EMU Sovereign Yield Spreads,” *Economics Letters*, 90, 156–162.
- GRANGER, C., AND P. NEWBOLD (1974): “Spurious Regressions in Econometrics,” *Journal of Econometrics*, 2, 111–120.
- GRAVELLE, T. (2002): “The Microstructure of Multiple-Dealer Equity and Government Securities Markets: How They Differ,” *Bank of Canada Working Paper*, 2002-09.
- GRÜNBIHLER, A., F. A. LONGSTAFF, AND E. S. SCHWARTZ (1994): “Electronic Screen Trading and the Transmission of Information: An Empirical Examination,” *Journal of Financial Intermediation*, 3, 166–187.
- HALLERBERG, M., AND G. B. WOLFF (forthcoming): “Fiscal Institutions, Fiscal Policy and Sovereign Risk Premia in EMU,” *Public Choice*.
- HARTMANN, P., A. MADDALONI, AND S. MANGANELLI (2003): “The Euro Area Financial System: Structure, Integration and Policy Initiatives,” *Oxford Review of Economic Policy*, 19(1).
- HEPPKE-FALK, K., AND G. B. WOLFF (2008): “Moral Hazard and Bail-Out in Fiscal Federations: Evidence for the German Länder,” *Kyklos*, 61(3).
- KAMINSKY, G., AND S. SCHMUKLER (forthcoming): “Short-Run Pain, Long-Run Gain: Financial Liberalization and Stock Market Cycles,” *Review of Finance*.
- KEMPF, A., AND O. KORN (1998): “Trading System and Market Integration,” *Journal of Financial Intermediation*, 7, 220–239.

- LAMEDICA, N., AND R. RENO (2007): “Integration of International Bond Markets: Did Anything Change with EMU?,” *Applied Economics Letters*, 14, 829–832.
- LEVINE, R. (2005): “Finance and Growth: Theory, Evidence, and Mechanisms,” in: *Philippe Aghion and Steve Durlauf (eds.): The Handbook of Economic Growth, Amsterdam: North Holland*.
- OBSTFELD, M., AND A. TAYLOR (2004): *Global Capital Markets: Integration, Crisis, and Growth*. Cambridge University Press, Cambridge.
- PAGANO, M., AND E.-L. V. THADDEN (2004): “The European Bond Markets under EMU,” *Oxford Review of Economic Policy*, 20 (4), 531–554.
- SATO, S., AND J. HAWKINS (2001): “Electronic Finance: An Overview of the Issues,” *BIS Paper*, No 7.
- SCHULZ, A., AND G. B. WOLFF (2008): “The German Sub-National Government Bond Market: Evolution, Yields and Liquidity,” *Deutsche Bundesbank discussion paper*, 06-2008.
- SORENSEN, B. E., AND O. YOSHA (1998): “International Risk Sharing and European Monetary Unification,” *Journal of International Economics*, 45, 211–38.
- YOSHA, O., S. KAKEMNLI-OZCAN, AND B. SORENSON (2001): “Economic Integration, Industrial Specialization and the Asymmetry of Economic Fluctuations,” *Journal of International Economics*, 55, 107–37.

Appendix

A Main appendix

A.1 Figures

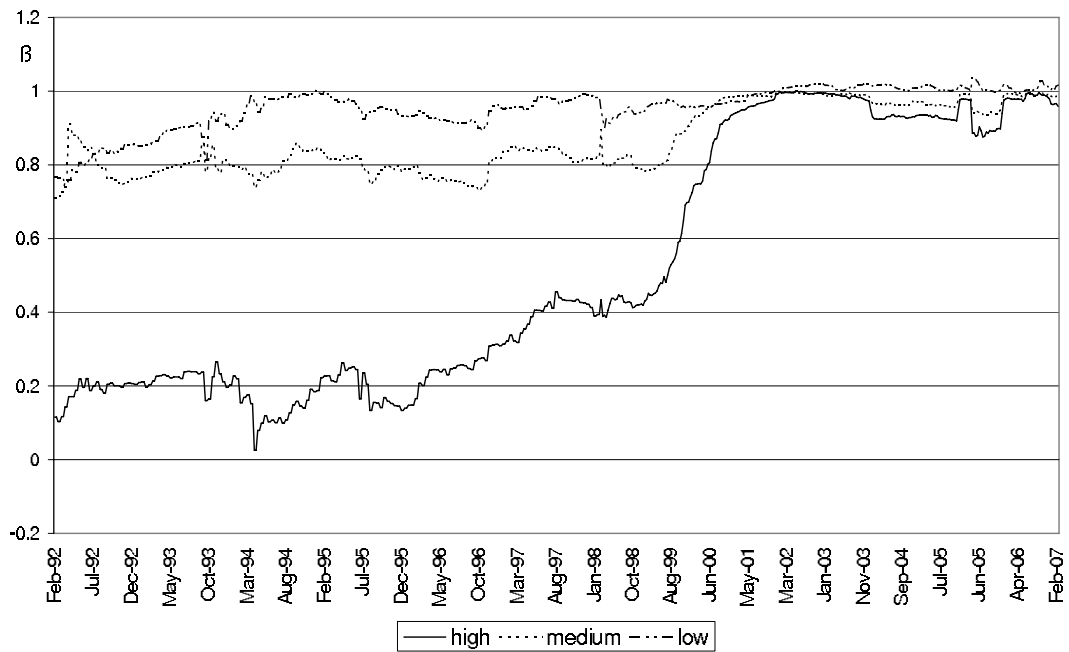


Figure A-1: Evolution of average β s of EMU countries. Yield data are swap adjusted. Source: Thomson Financial Datastream, own calculations.

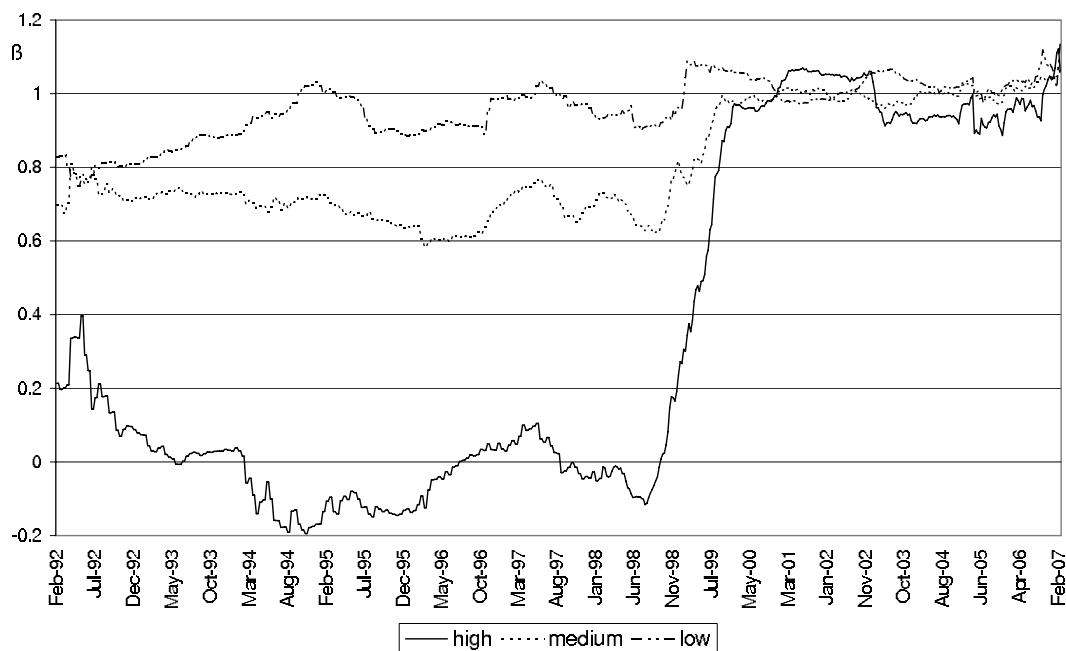


Figure A-2: Evolution of β of the UK. Yield data are swap adjusted. Source: Thomson Financial Datastream, own calculations.

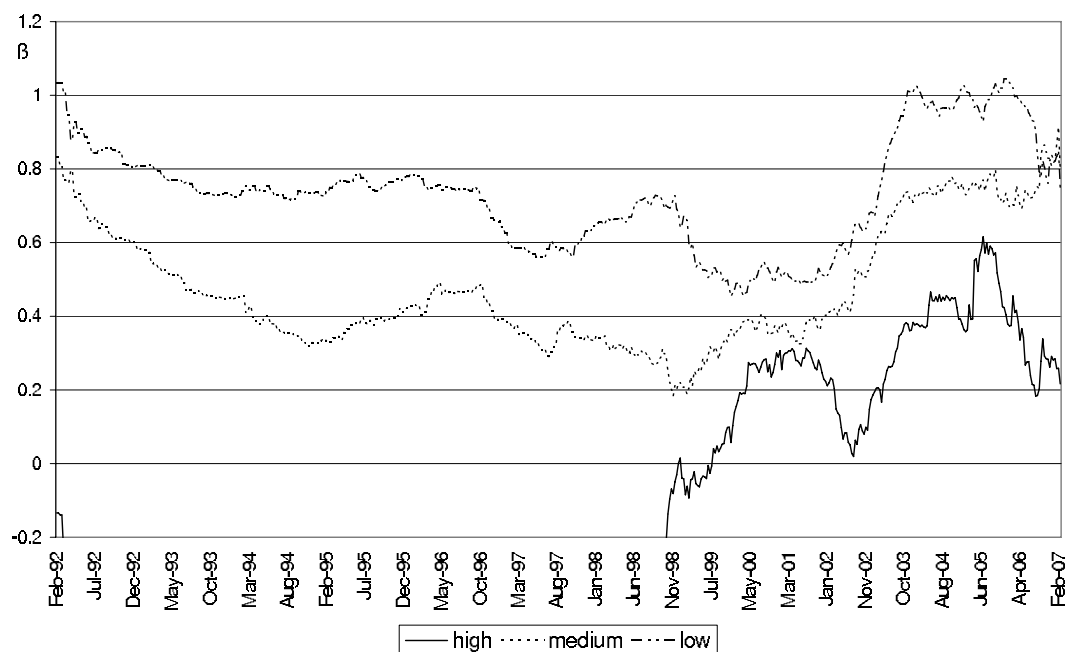


Figure A-3: Evolution of β of the US. Yield data are swap adjusted. Source: Thomson Financial Datastream, own calculations.

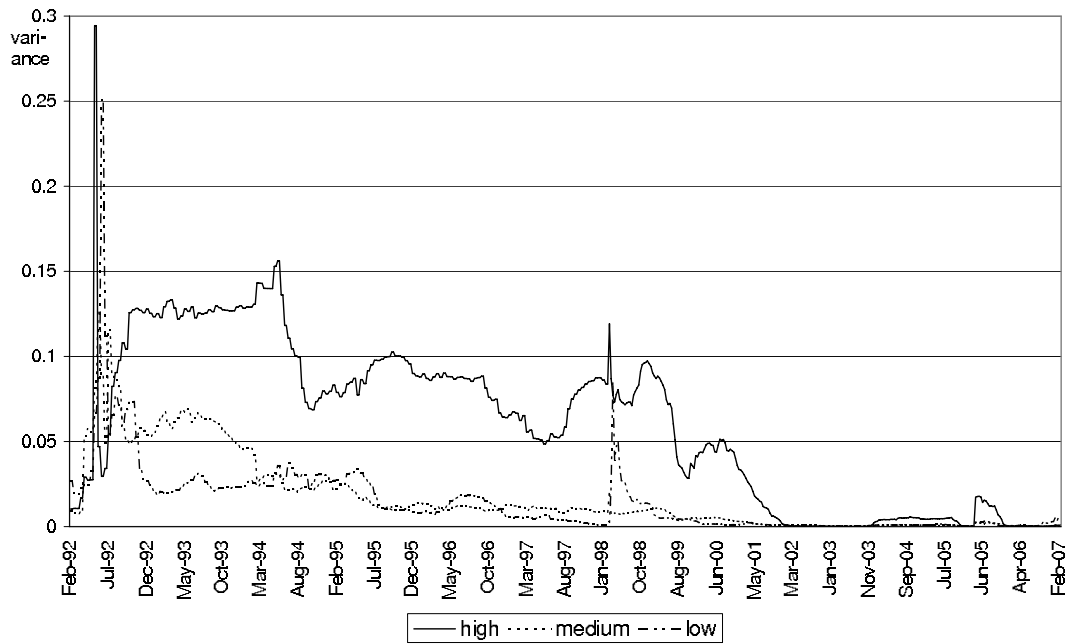


Figure A-4: Evolution of variance of β_s of EMU countries. Yield data are **not** swap adjusted. Source: Thomson Financial Datastream, own calculations.

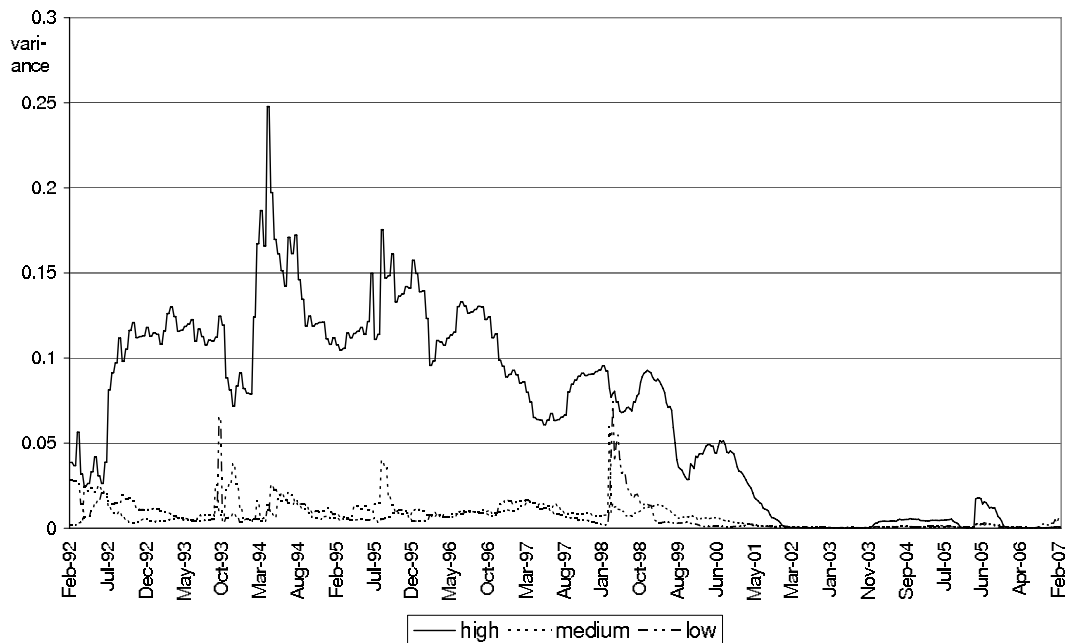


Figure A-5: Evolution of variance of β_s of EMU countries. Yield data are swap adjusted. Source: Thomson Financial Datastream, own calculations.

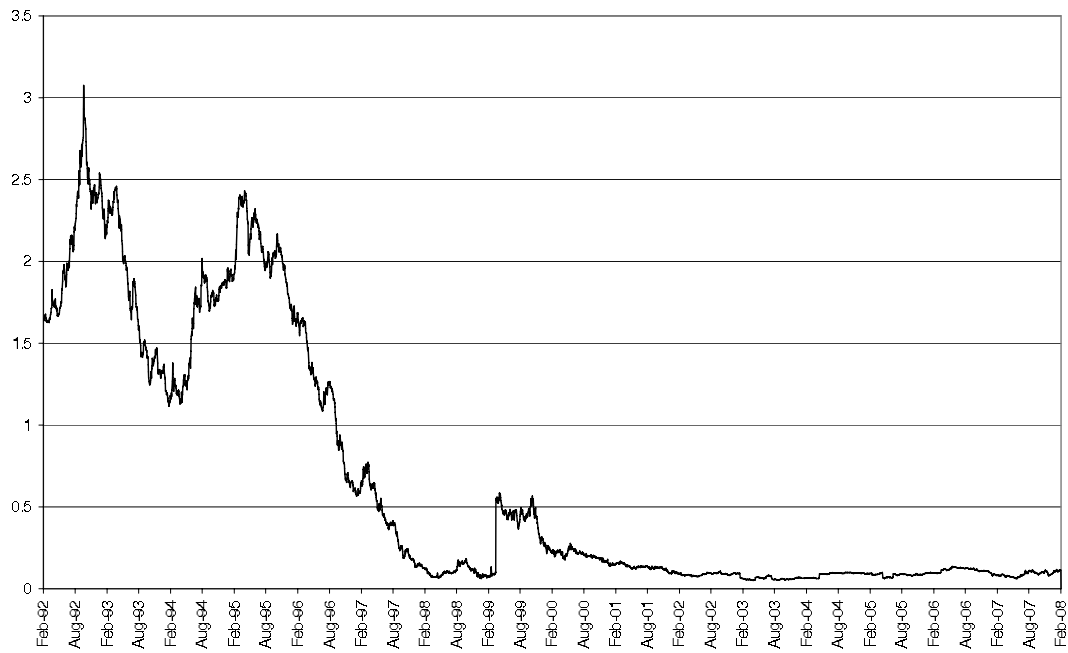


Figure A-6: Dispersion of yields in EMU. Source: Thomson Financial Datastream, own calculations.

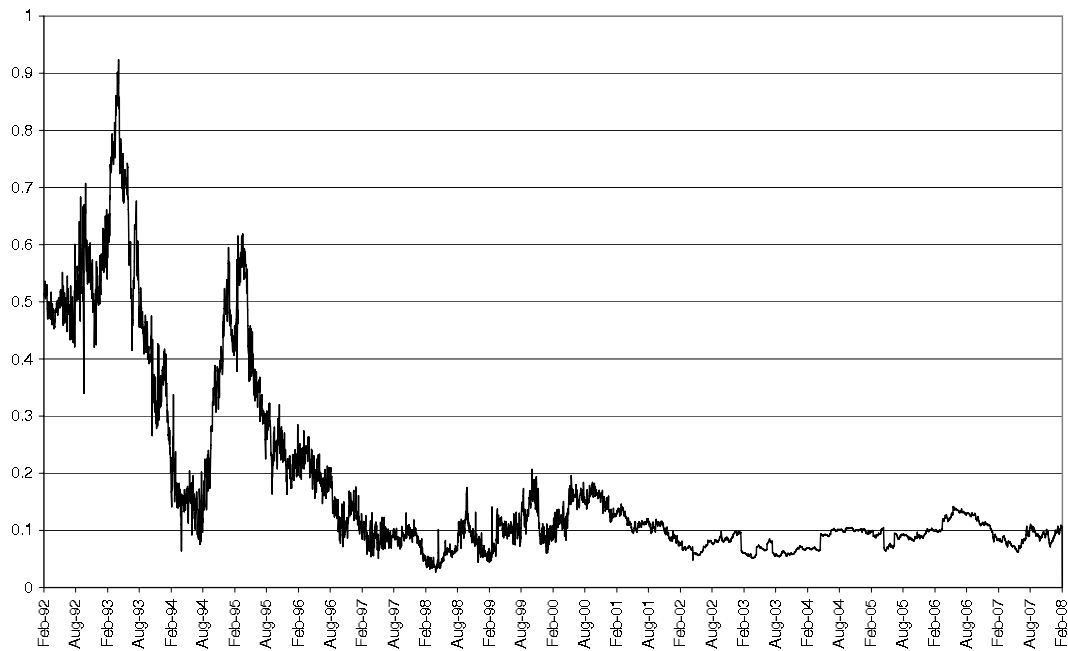


Figure A-7: Dispersion of swap-adjusted yields in EMU. Source: Thomson Financial Datastream, own calculations.

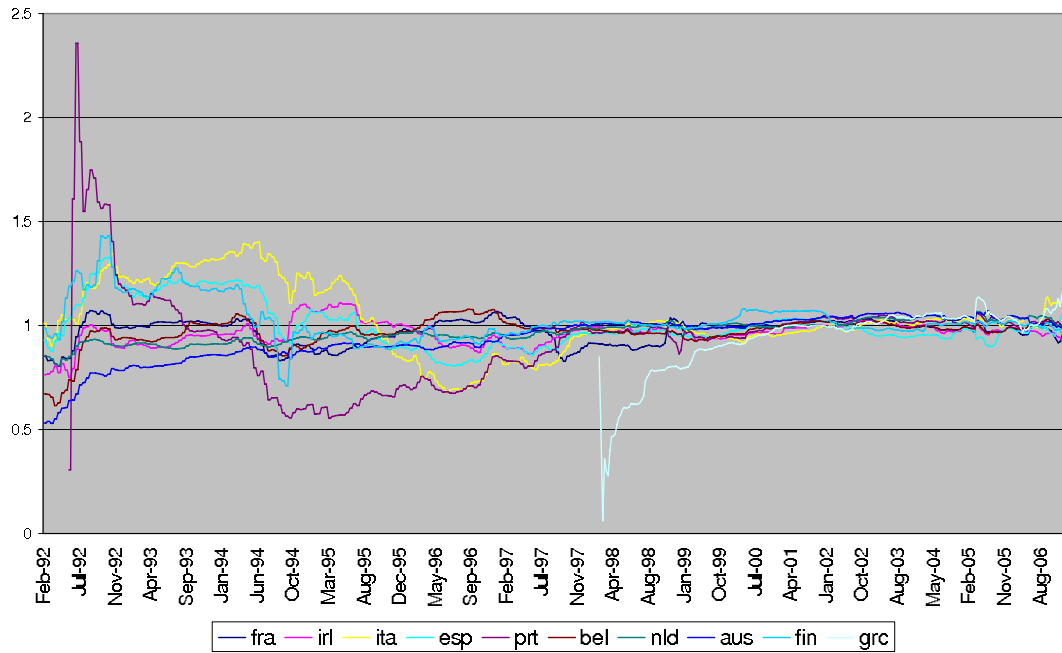


Figure A-8: Evolution of β of the EMU at the low frequency. Source: Thomson Financial Datastream, own calculations.

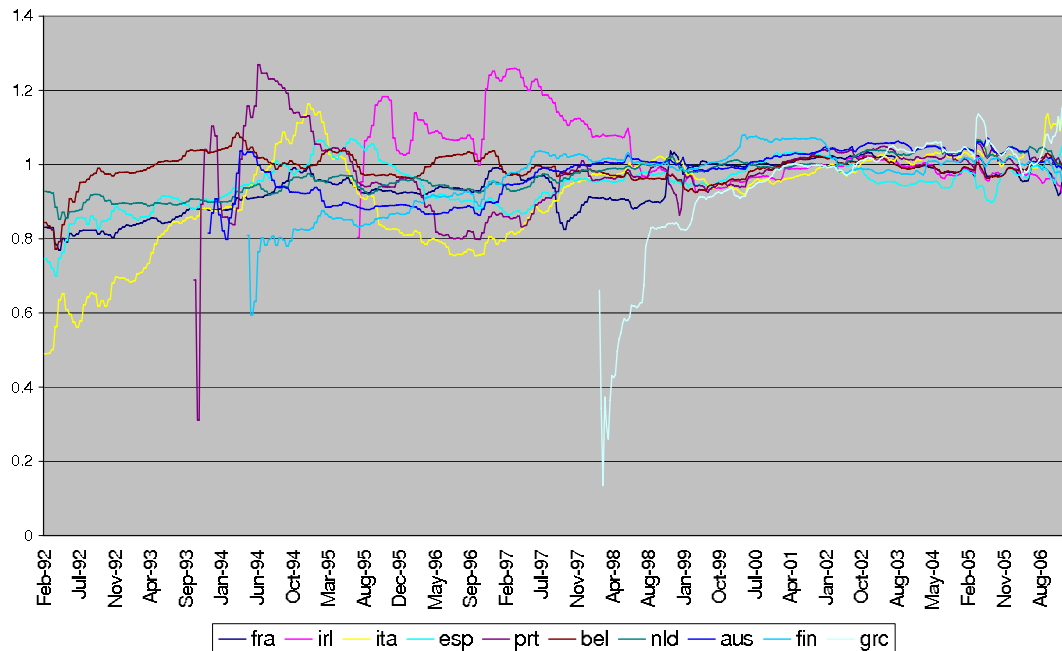


Figure A-9: Evolution of β of the EMU at the low frequency. Yield data are swap adjusted. Source: Thomson Financial Datastream, own calculations.

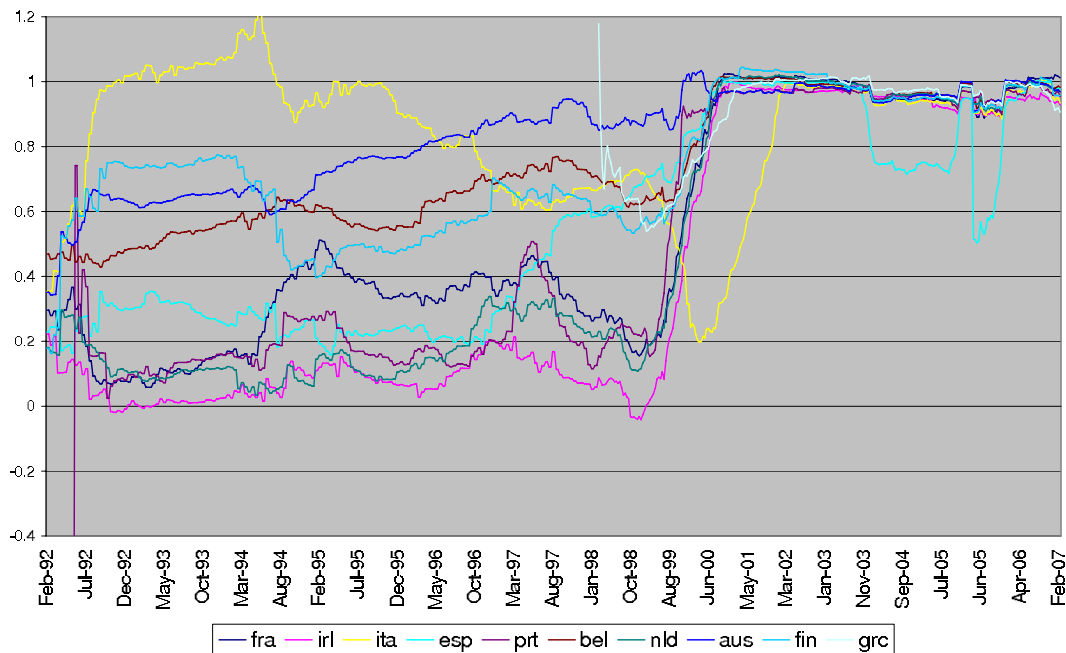


Figure A-10: Evolution of β of the EMU at the high frequency. Source: Thomson Financial Datastream, own calculations.

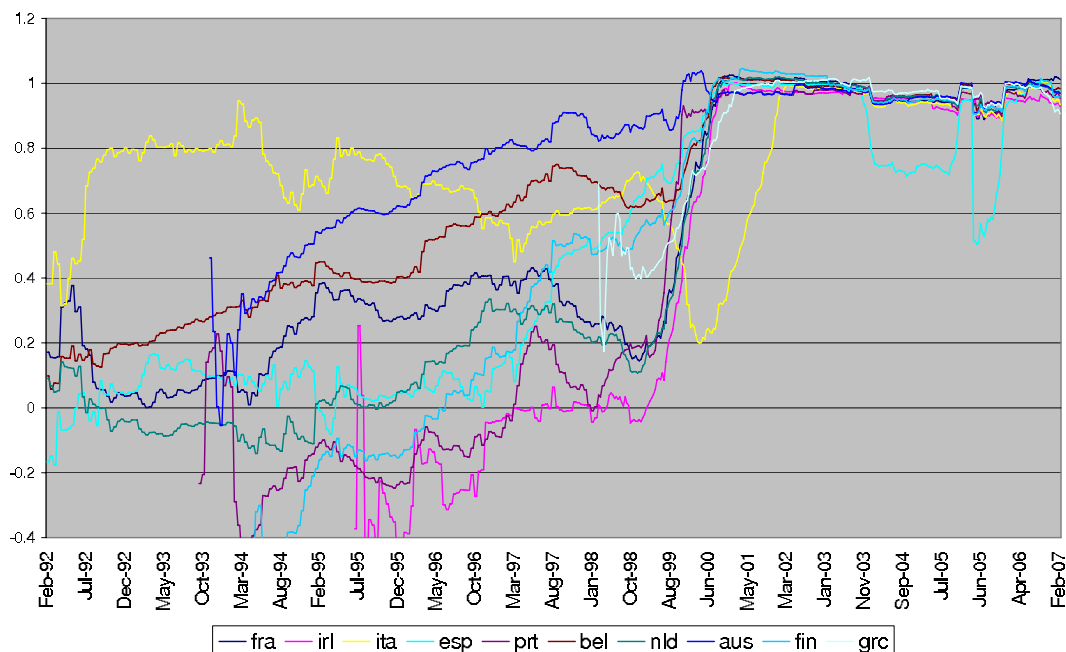


Figure A-11: Evolution of β of the EMU at the high frequency. Yield data are swap adjusted. Source: Thomson Financial Datastream, own calculations.

Table 1: Maximum Wald F-statistic with high frequency data

	date	F
aus	5/16/1996	327.9826
bel	9/19/2000	312.6054
esp	11/23/1998	524.2919
fin	9/18/2000	164.1811
fra	10/31/2000	514.4295
grc	3/20/2001	368.1359
irl	12/7/2000	853.7301
ita	4/4/1997	44.67071
nld	9/18/2000	1134.715
prt	12/7/1999	450.4578
uk	12/11/2000	532.8975
us	7/18/2000	455.1495

Notes: Maximal F-value for Quandt-Andrews unknown breakpoint test. Data are not swap adjusted.

Table 2: Maximum Wald F-statistic with low frequency data

	date	F
aus	9/22/1998	442.40
bel	12/9/1996	24.32
esp	5/2/1996	44.75
fin	6/28/1995	30.49
fra	8/26/1999	26.13
grc	12/10/2001	203.01
irl	3/16/1995	16.81
ita	3/14/1996	82.76
nld	8/2/1999	75.38
prt	9/29/1998	34.60
uk	7/21/2003	10.69
us	1/15/2001	360.01

Notes: Maximal F-value for Quandt-Andrews unknown breakpoint test. Data are not swap adjusted.

B Interest rate parity and bond market integration

A useful starting point for an investigation of international bond market integration is the covered interest parity. The covered interest parity condition states that two risk free assets, i.e., two assets without default and transaction cost risk, should have the same yields adjusted for the expected exchange rate change:

$$(1 + i_{s_{j,t,T}}) = (1 + i_{s_{g,t,T}}) \left(\frac{F_{t+T}}{S_t} \right)^{\frac{1}{T}} \quad (\text{B-1})$$

where $i_{s_{j,t,T}}$ is the spot interest rate at time t with maturity T for country j , and F is the future exchange rate. The benchmark country, Germany, is denoted by g . Suppose the asset of country j has a default probability of p relative to the benchmark Bund, then the arbitrage condition states

$$(1 + i_{j,t,T})(1 - p) + p(1 - \tau)(1 + i_{j,t,T}) = (1 + i_{g,t,T}) \left(\frac{F_{t+T}}{S_t} \right)^{\frac{1}{T}} \quad (\text{B-2})$$

where τ is the fraction of investment lost in case of default. Combining Equation B-1 and B-2, the arbitrage condition can be rewritten as

$$(1 + i_{j,t,T})(1 - \tau p) = (1 + i_{g,t,T}) \frac{(1 + i_{s_{j,t,T}})}{(1 + i_{s_{g,t,T}})} \quad (\text{B-3})$$

If we define

$$d_{j,t,T} = \frac{\tau p}{1 - \tau p} \quad (\text{B-4})$$

then Equation B-3 can be rewritten as

$$\frac{(1 + i_{j,t,T})}{(1 + i_{g,t,T})} = (1 + d_{j,t,T}) \frac{(1 + i_{s_{j,t,T}})}{(1 + i_{s_{g,t,T}})} \quad (\text{B-5})$$

Taking logs of B-5 gives approximately

$$i_{j,t,T} = i_{g,t,T} + \log(1 + d_{j,t,T}) + i_{s_{j,t,T}} - i_{s_{g,t,T}} \quad (\text{B-6})$$

Thus, in the absence of exchange rates and transaction and default costs, interest rates of sovereign bonds of country j should equal the interest rates of sovereign bonds of the benchmark country g . To avoid spurious correlation problems (Granger and Newbold 1974) related to (near) unit roots of interest rates, one can estimate the following equation in first differences:

$$\Delta i_{j,t,T} = \alpha_{jt} + \beta_{jt} \Delta i_{g,t,T} + \varepsilon_{jt}. \quad (\text{B-7})$$

This is a commonly used indicator of financial market integration. It is based on the intuition that the more integrated the market is, the more bond yields should react to common factors instead of local factors.²⁷ In perfectly integrated markets, one would expect that common news is reflected one-to-one in the local yields, i.e., $\beta = 1$. A deviation of β from 1 indicates changes in the interest rate of the benchmark country are not fully reflected in the interest rate of the country j . This can result from the omission of an exchange rate adjustment term if exchange rate variations are not orthogonal to yields. Alternatively, it can result from changes in default and liquidity risk. Finally it can result from a separation of markets due to high transactions costs, which could result from capital controls, information barriers and other factors. Equation B-8 is estimated by OLS for a forward looking window of 500 business days. This provides a time series for the β and α coefficients.

We try to disentangle the different reasons for β to differ from one. In one set of regressions, we adjust for exchange rate changes as contracted in the exchange rate future markets. We therefore adjust our interest series by the swap rate difference $r_{it}^{adjusted} = i_{j,t,T} - (is_{j,t,T} - is_{g,t,T})$. A simple comparison of the dispersion of adjusted yields of EMU countries with non-adjusted yields shows that exchange rate adjustments are an important source of yield heterogeneity pre-EMU (Figures A-6 and A-7). Accordingly, we estimate

$$\Delta r_{it}^{adjusted} = \alpha_{it} + \beta_{it} \Delta r_{Bt} + \varepsilon_{it}, \quad (\text{B-8})$$

This allows to compare the German Länder with EMU, the UK and the US.²⁸ However, it should be noted that this adjustment only eliminates the exchange rate changes as manifested in swap rates. It does not eliminate the risk of holding uncovered foreign bonds.

A second reason for β to deviate from one is liquidity risk, that is related to yield changes. Liquidity risk can be defined as the difficulty to buy and sell bonds in the markets. It can be particularly relevant if general risk aversion increases and investors prefer to invest in safe havens from which they can depart easily thanks to deep and liquid markets. We therefore also estimated

²⁷Such a news based measure is described, e.g., in Baele, Ferrando, Hördahl, Krylova, and Monnet (2004).

²⁸A similar adjustment has been performed by Favero, Giavazzi, and Spaventa (1997) and Gómez-Puig (2006) in the context of an investigation of the determinants of sovereign bond spreads. However, it has not yet been used to adjust yields to estimate bond market integration.

the regression B-8 with an additional control variable for liquidity, the bid-ask spread.

Finally, default risk can be re-assessed when fiscal fundamentals of a country respectively Land change relative to the German central government. However, we believe that such changes occur relatively rarely as fiscal and macroeconomic fundamentals change slowly and rarely. It appears therefore very unlikely, that these changes would significantly alter estimation results based on daily data.

This measure is routinely calculated by the ECB to assess the degree of financial market integration in the European sovereign bond markets. However, the ECB employs monthly data to estimate the coefficients. In contrast, we estimate bond market integration on a daily basis. This means that we test, in how far a change of the Bund yield from one day to the next is reflect in the corresponding change of the yield of the other country/Land.

A prerequisite for bond markets to price in the information at such a frequency is a sufficiently high degree of information processing capacity and transparency. To gain further insights, we therefore also estimate the regressions at a lower frequency. More precisely, instead of defining Δ to be the one business day difference, we also compute Δ as a 5 days and a ten days difference.²⁹ Accordingly, we present all figures with the one day, five days and ten days frequency. The difference between the estimated β series at a one, five and ten days difference provides us with useful information on the speed with which market participants can process and acquire information. While it is also possible, that important macroeconomic news across countries/Länder are clustered in the same week but not on the same day, this should hardly explain differences of the estimated coefficients. Indeed, even at weekly frequency it is hard to think about many news releases that systematically occur in the same week but not the same day and that are so frequent as to explain huge differences. Instead it appears more plausible that a larger coefficient is really driven by the fact that the information manifested in the German interest rate takes time to be reflected in the other interest rate series.

²⁹The resulting autocorrelation in the residuals leaves the estimated β s unbiased. We perform Newey-West corrections of the standard errors and present the confidence bands with Newey-West standard errors in Figure C-15.

C Robustness check: OLS regressions

C.1 Main results

Figure C-1 plots the evolution of the average estimated β (according to Equation B-8) for 10 EMU countries. To be able to compare the results with the German federation, we adjusted pre-EMU yields by the swap spread. This allows to adjust for expected exchange rate changes and thereby renders the results more comparable to a unified monetary area such as Germany, where no exchange rate exist and the European Monetary Union itself.³⁰ As can be seen, the average level of integration increased in the run-up to EMU and is close to one since then. The level of measured integration is substantially higher, if one looks at one-week or two-weeks yield differences before EMU. A lower frequency of price differencing increases the estimated β from 0.4. to 0.7 in the early 1990s. During EMU, financial markets seem to react very quickly. In fact, the coefficient is almost identical for one-day, one-week or even two-weeks differences. Noticeably, during recent financial market turmoils, a slight decrease in the level of integration can be observed.

Our results indicate that the increasing level of integration is not only linked to the abolition of exchange rate risk as our data are adjusted for exchange rate expectations by swap spreads. Overall, our results for EMU confirm previous results by e.g. Baele, Ferrando, Hördahl, Krylova, and Monnet (2004), who showed a substantial increase in sovereign bond market integration and relate it to the introduction of the euro. The higher integration level might, however, also result from increased standardization of bond conventions, rendering them closer substitutes. It might also result from newly established electronic trading platforms, increasing price transparency in the bond market.

To further assess the impact of monetary union, relative to other factors, we look at US and UK bond yields. If the bond market integration shown in the previous section was due to monetary union, we would not expect to find a similar pattern in non-EMU data. However, as Figure C-3 demonstrates, also the UK experienced a sharp increase in integration-coefficient in the late 1990s.³¹ Repeating the regressions with a lower frequency (one and two weeks)

³⁰Adjusting for swap spreads considerably lowers the heterogeneity of estimated β s in the euro area.

³¹The increase is also statistically significant, and the 95% confidence interval lies post 2000 very close around one.

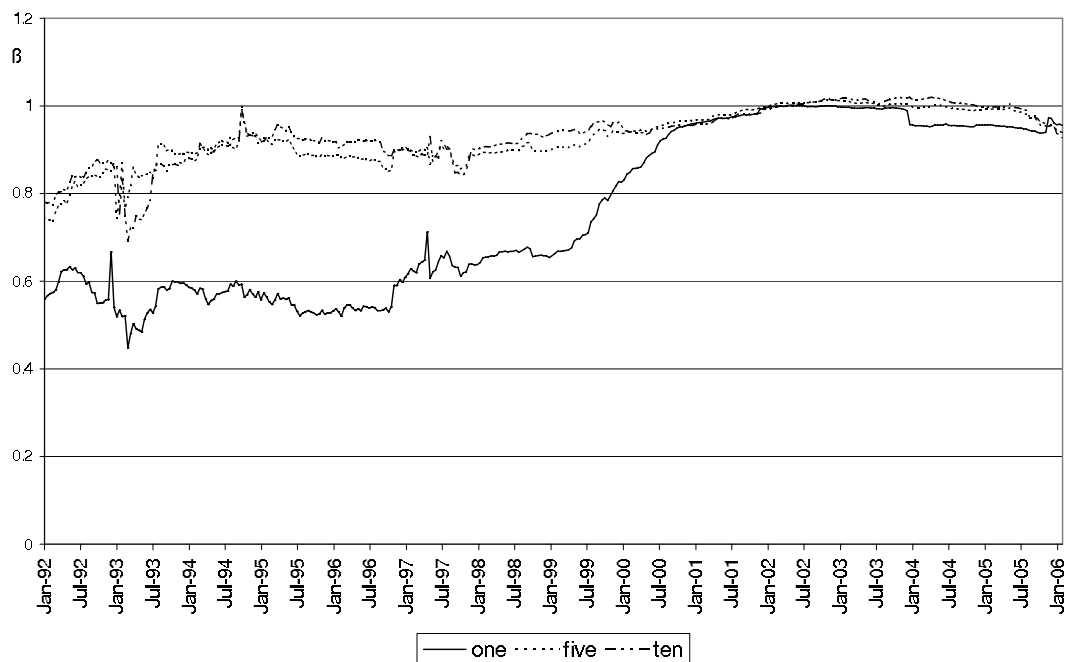


Figure C-1: Evolution of cross-sectional average β of EMU countries. ”one”, ”five”, ”ten” denote average betas for swap adjusted yields at a one, five and ten business days yield difference. Estimates are carried out on a forward looking window of 500 days. Source: Thomson Financial Datastream, own calculations.

yields a different picture. Here, bond market integration was already quite high in the early 1990s, but still increased further in the late 1990s to a level of one. Hence, on a weekly basis, price information revealed in the German Bund was almost completely reflected in Guilt yields. The much lower coefficients for daily yield changes suggest, that information processing capacities were limited in the early 1990s. Indeed, electronic trading platforms were only established in the mid to late 1990s. For example, Bunds and Guilts have been traded on the common BondVision platform as of 2001.³² Since we estimate the regressions 500 business days forward looking, observations from 2001 enter already in the coefficient estimation of 1999.

We next turn to the same exercise with US data.³³ The overall level of integration, as one would expect, is significantly lower than within Europe. As is the case with British bonds, US paper appears to be more integrated when looking at lower frequencies. The integration coefficient is about 0.8 in the early 1990s, dropping to 0.5 in 1999. From there on, integration increases past

³²Cf. bondvision.net for details.

³³The benchmark country is again Germany.

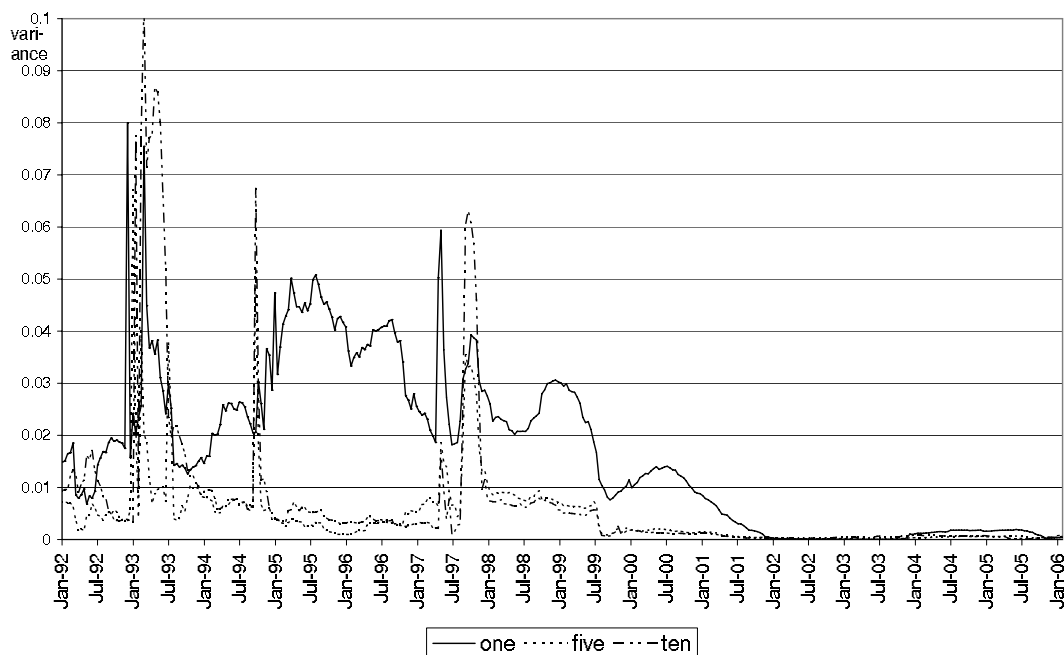


Figure C-2: Evolution of cross-sectional variance of β for EMU countries. "one", "five", "ten" denote average betas for swap adjusted yields at a one, five and ten business days yield difference. Estimates are carried out on a forward looking window of 500 days. Source: Thomson Financial Datastream, own calculations. The spike in October 1997 for 10 day difference is driven by Greece.

the original level. On a daily frequency, we observe a continuous increase since the mid 1990s, with a particularly steep slope from 1999 on. Foregoing swap spread correction, we find a more pronounced integration starting in 1999 at all frequencies. While the coefficient for daily yield changes finally approaches 0.7, the measure for lower frequencies reaches approximately one, as in the case with swap spread correction.

Adjusting yields by the spread of swap rates according to the uncovered interest rate parity, we control for the expected changes in exchange rates. Figure C-2, which depicts the cross sectional variance of the estimated coefficients for EMU-countries clearly shows the crisis into the European exchange rate system of the early to mid 1990s. Already from the mid 1990s, we observe a significant decline in heterogeneity among countries which later formed the EMU.

Figure C-5 depicts the results for the German Länder. It plots the evolution of the mean of the estimated β coefficients, which assess the impact of changes in Bund yields on changes of the yield in Land i , across the 16 Länder. The results show that the level of integration is significantly smaller than for the

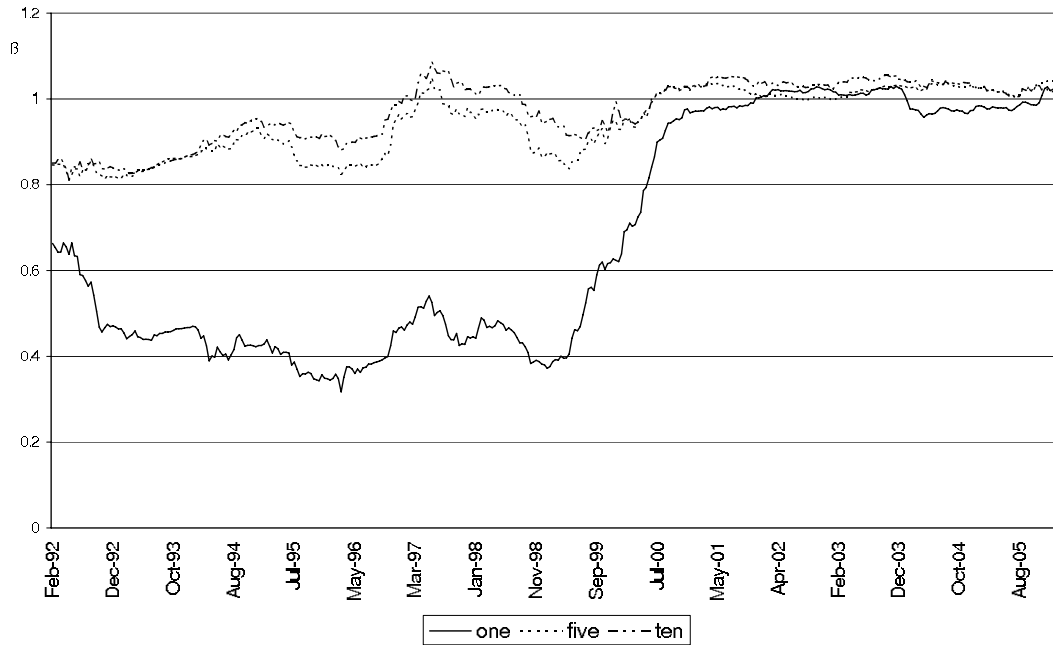


Figure C-3: Evolution of β for the UK. "one", "five", "ten" denote average betas for swap adjusted yields at a one, five and ten business days yield difference. Estimates are carried out on a forward looking window of 500 days. Source: Thomson Financial Datastream, own calculations.

EU central government bond market. Moreover, a strong increase in the level of financial market integration in the course of the 1990s can be observed. At a lower frequency of one week (five business days) or two weeks, Länder yields more and more co-move with the yield of the Bund, which hints at increased integration. Compared to central government bonds, we find that the level of sub-national bond market integration is much lower. Overall the results suggest that the dynamics of Länder yields is quite different from the dynamics of the central government yield. Our news-based measure of market integration points at significantly lower levels of integration in the German sub-national government bond market than the euro area sovereign bond market. Especially at a high frequency of one day differences, integration is almost absent.

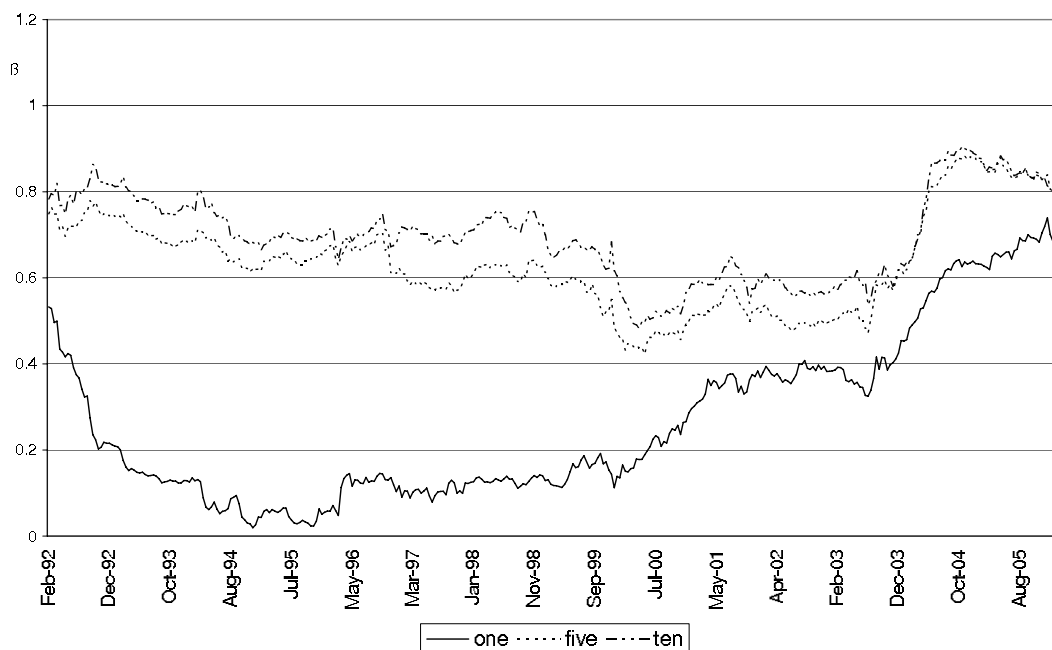


Figure C-4: Evolution of β of the US. "one", "five", "ten" denote average betas for swap adjusted yields at a one, five and ten business days yield difference. Estimates are carried out on a forward looking window of 500 days. Source: Thomson Financial Datastream, own calculations.

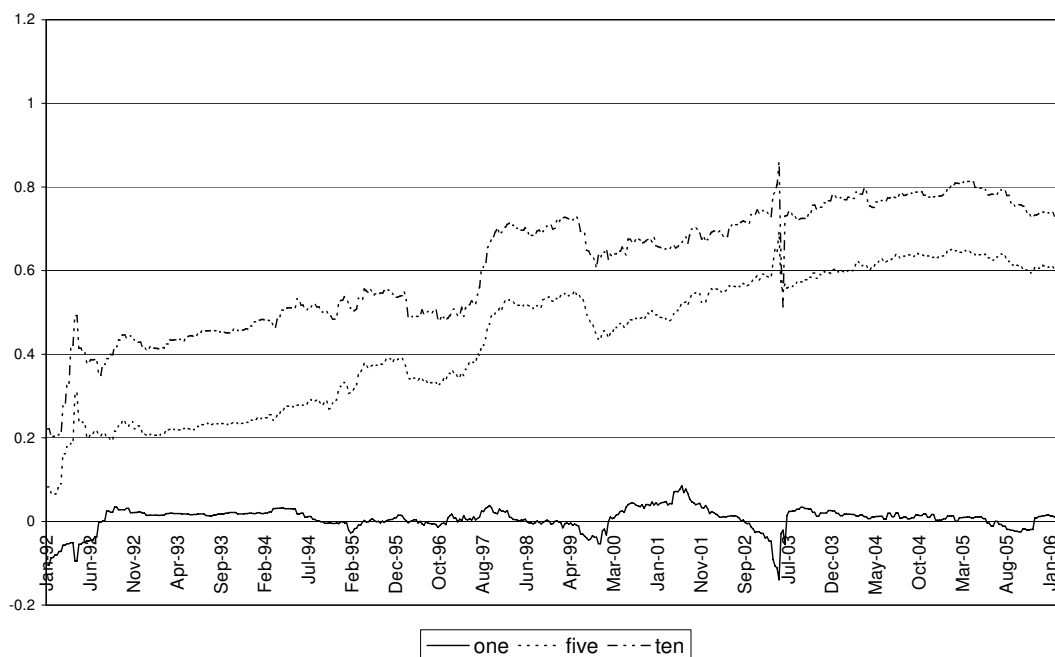


Figure C-5: Evolution of the cross-sectional mean of β . "one", "five", "ten" denote at a one, five and ten business day yield difference.

C.2 Further robustness checks

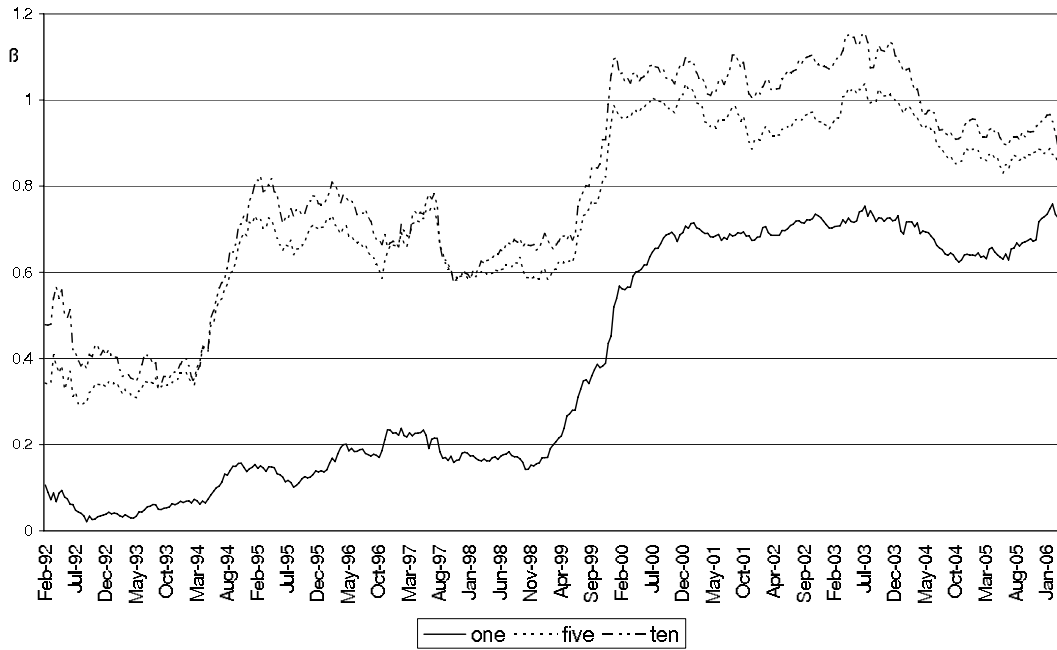


Figure C-6: Evolution of US β . Data are not swap rate adjusted. "one", "five", "ten" denote at a one, five and ten business day yield difference. Source: Thomson Financial Datastream, own calculations.

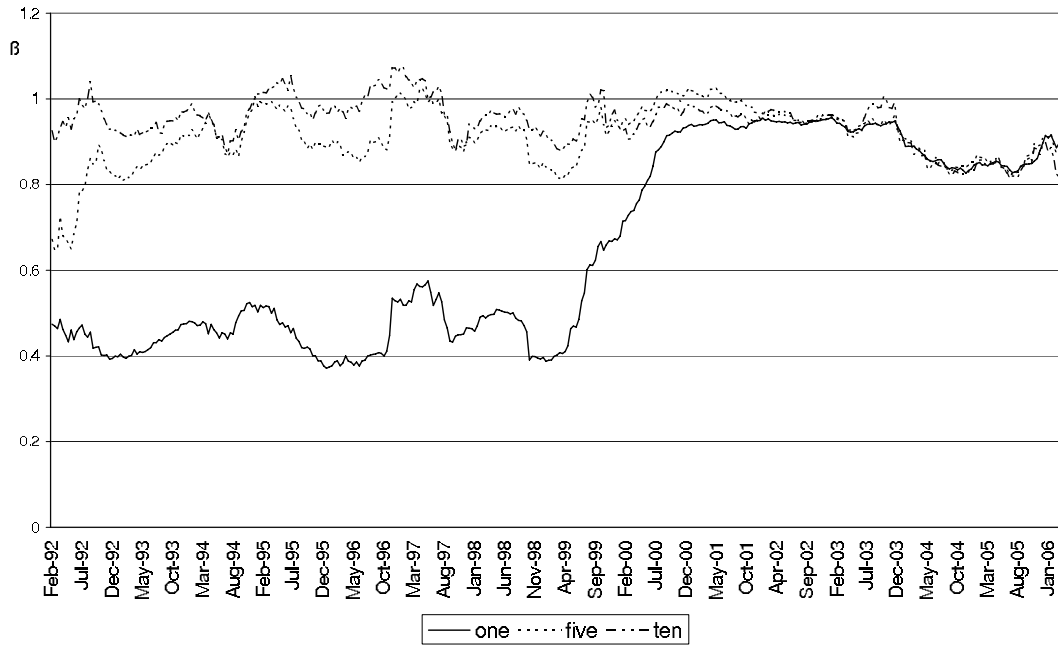


Figure C-7: Evolution of UK β . Data are not swap rate adjusted. "one", "five", "ten" denote at a one, five and ten business day yield difference. Source: Thomson Financial Datastream, own calculations.

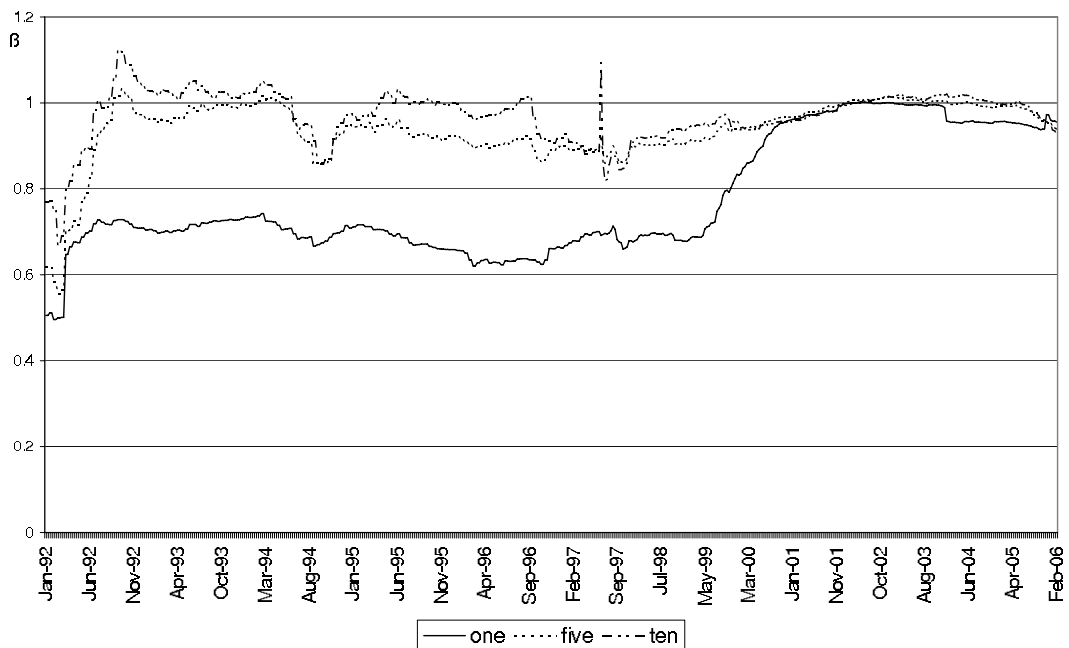


Figure C-8: Evolution of average β s of EMU countries. "one", "five", "ten" denote at a one, five and ten business day yield difference. Source: Thomson Financial Datastream, own calculations.

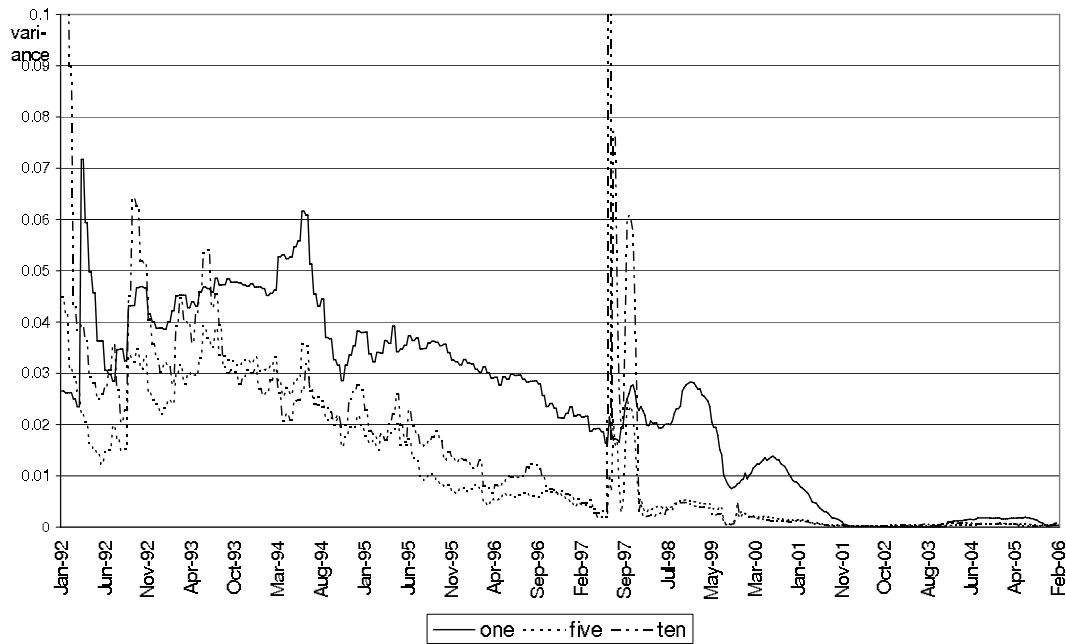


Figure C-9: Evolution of variance of β s of EMU countries. "one", "five", "ten" denote at a one, five and ten business day yield difference. Source: Thomson Financial Datastream, own calculations.

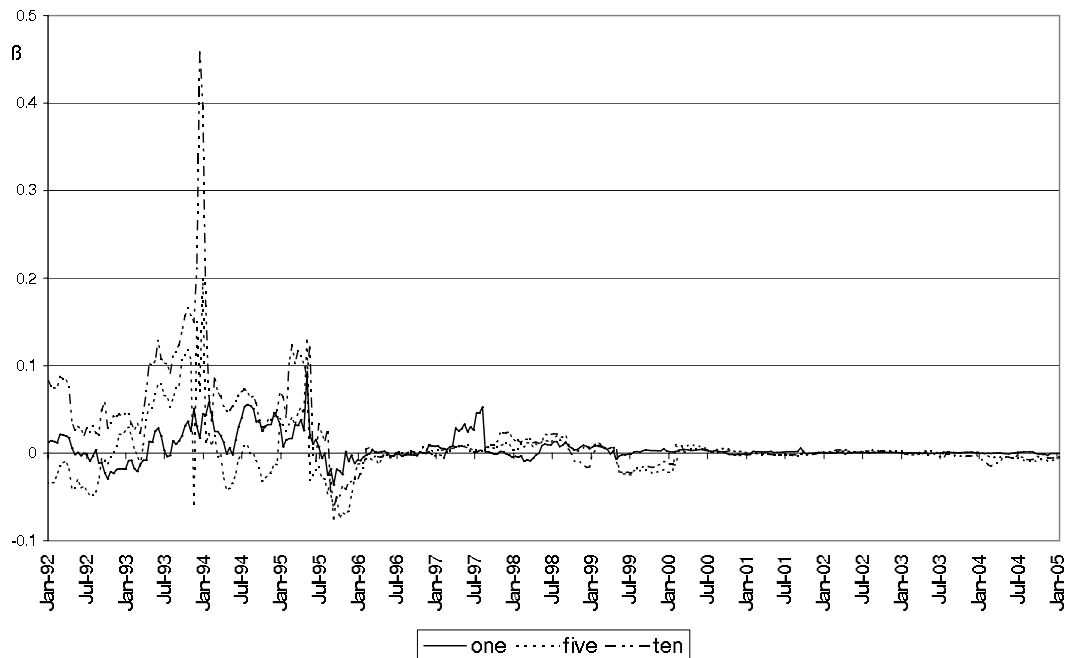


Figure C-10: Evolution of average coefficient on bid-ask spread of EMU countries. Yield data are swap adjusted, the bid-ask spread is included as additional control variable. "one", "five", "ten" denote at a one, five and ten business day yield difference. Source: Thomson Financial Datastream, own calculations.

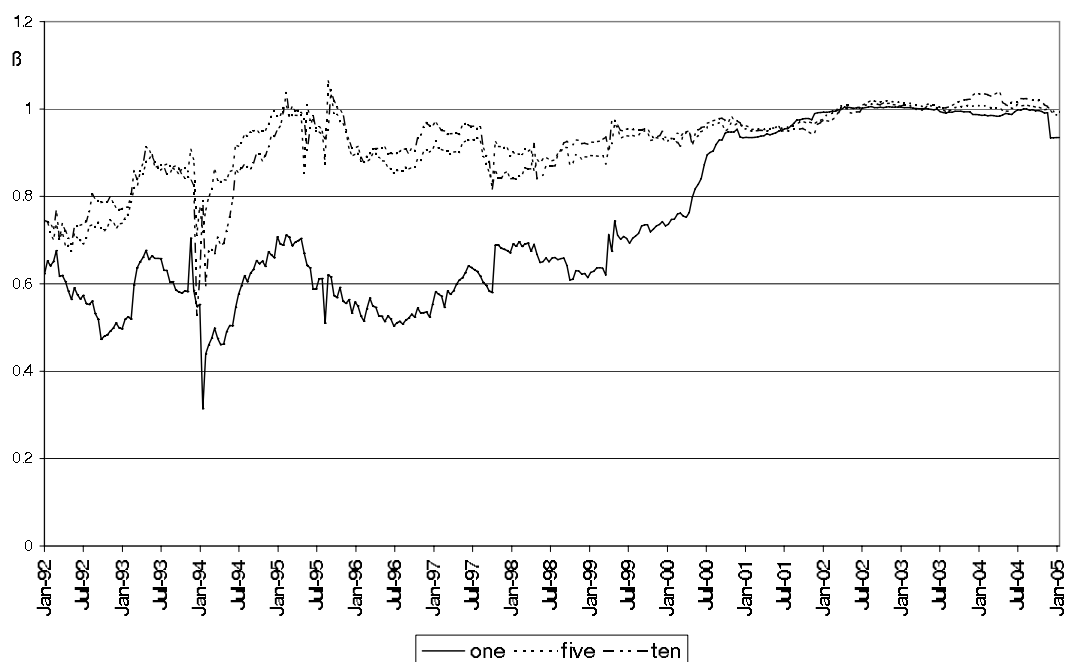


Figure C-11: Evolution of average β s of EMU countries. Yield data are swap adjusted, the bid-ask spread is included as additional control variable. "one", "five", "ten" denote at a one, five and ten business day yield difference. Source: Thomson Financial Datastream, own calculations.

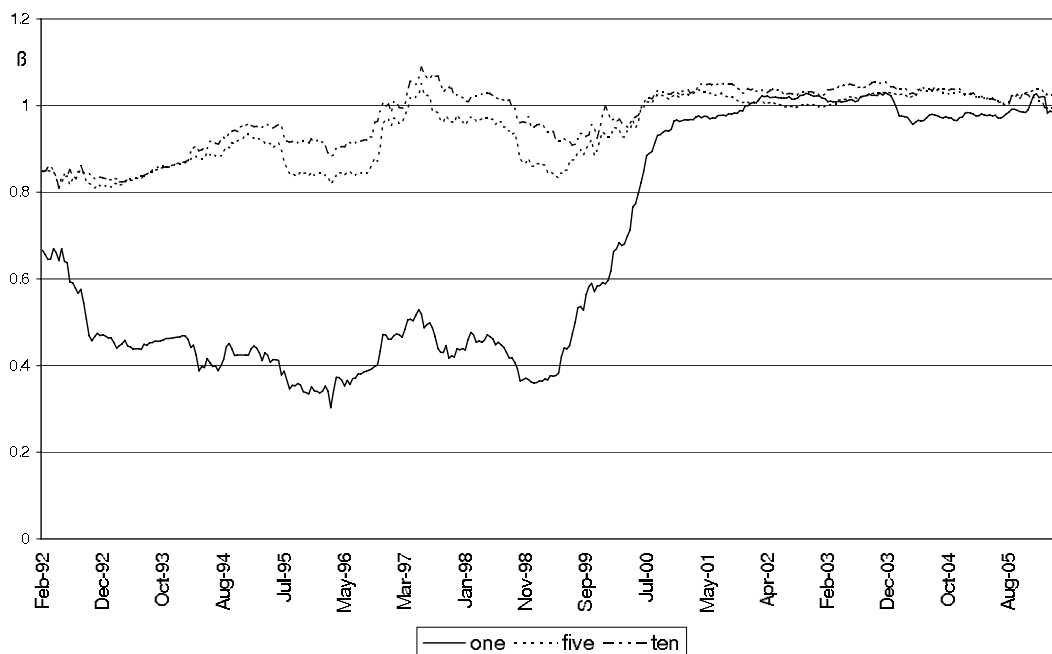


Figure C-12: Evolution of UK- β . Yield data are swap adjusted, the bid-ask spread is included as additional control variable. "one", "five", "ten" denote at a one, five and ten business day yield difference. Source: Thomson Financial Datastream, own calculations.



Figure C-13: Evolution of US- β . Yield data are swap adjusted, the bid-ask spread is included as additional control variable. "one", "five", "ten" denote at a one, five and ten business day yield difference. Source: Thomson Financial Datastream, own calculations.

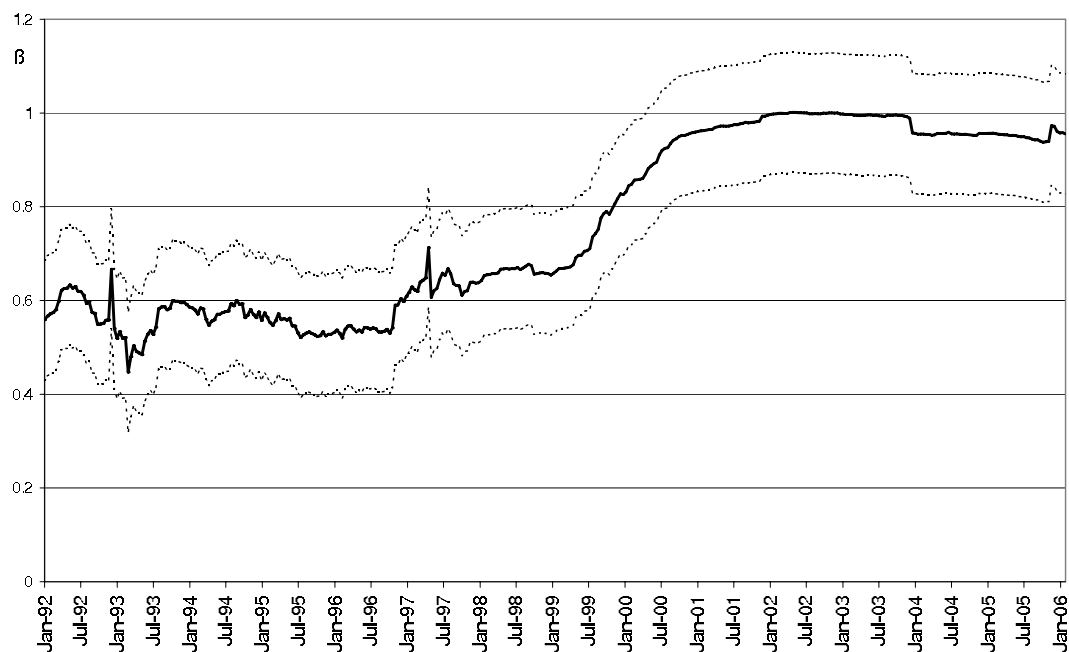


Figure C-14: Evolution of average β s of EMU countries at a one day difference. Dashed lines give ± 1 Newey-West standard errors. Yield data are swap adjusted. "one", "five", "ten" denote at a one, five and ten business day yield difference. Source: Thomson Financial Datastream, own calculations.

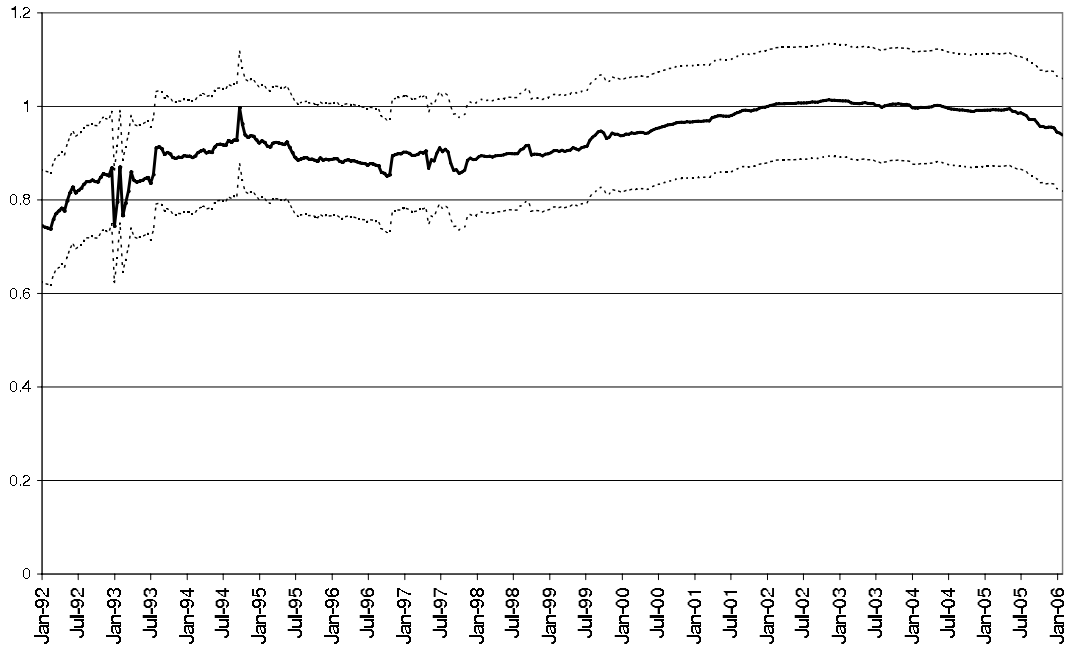


Figure C-15: Evolution of average β s of EMU countries at a five days difference. Dashed lines give ± 1 Newey-West standard errors. Yield data are swap adjusted. Source: Thomson Financial Datastream, own calculations.

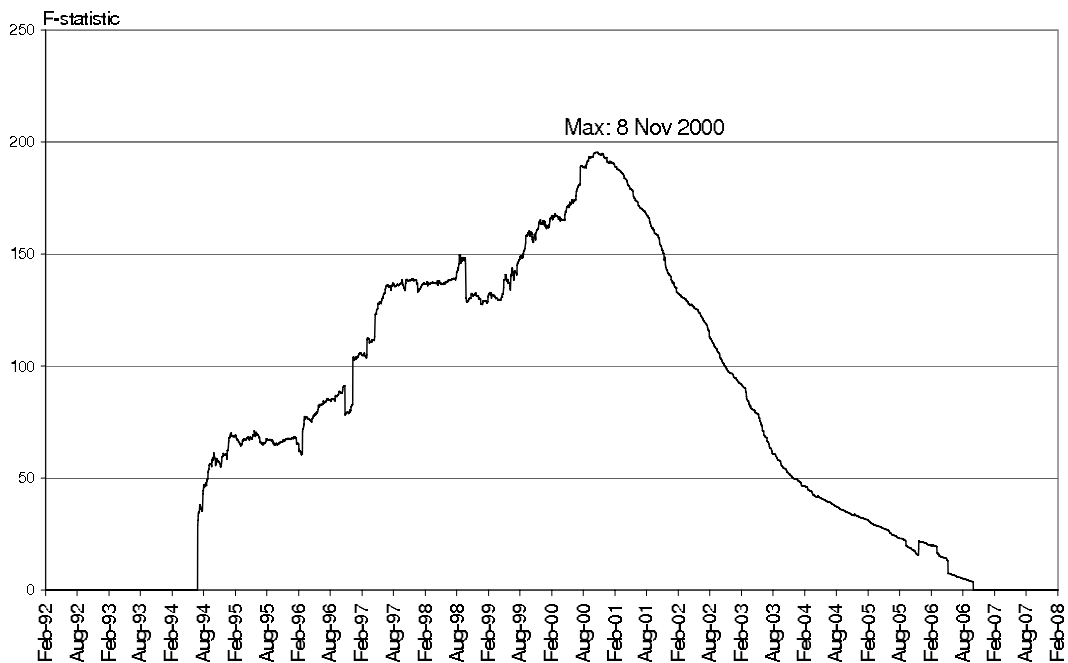


Figure C-16: F-statistic from Quandt-Andrews unknown breakpoint test. Unweighted mean across euro area countries without Luxembourg, Cyprus, Malta and Slovenia.

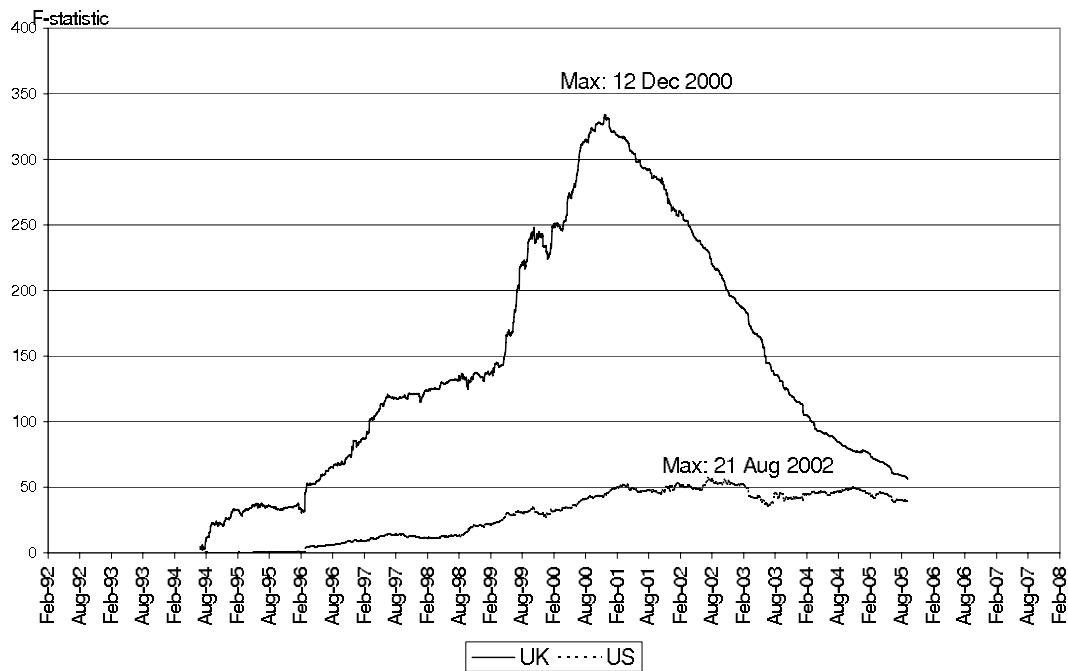


Figure C-17: F-statistic from Quandt-Andrews unknown breakpoint test for US and UK.

Table C-1: Maximum Wald F-statistic

	date	F
aus	10/10/1997	238.3
bel	9/14/2000	203.9
esp	2/25/1999	96.2
fin	10/6/1998	284.3
fra	10/31/2000	241.5
grc	1/31/2001	320.5
irl	12/6/2000	240.3
ita	3/6/2002	18.1
nld	9/14/2000	481.3
prt	1/4/2000	180.9
uk	12/12/2000	334.0
us	7/26/2002	57.3

Notes: Maximal F-value for Quandt-Andrews unknown breakpoint test.

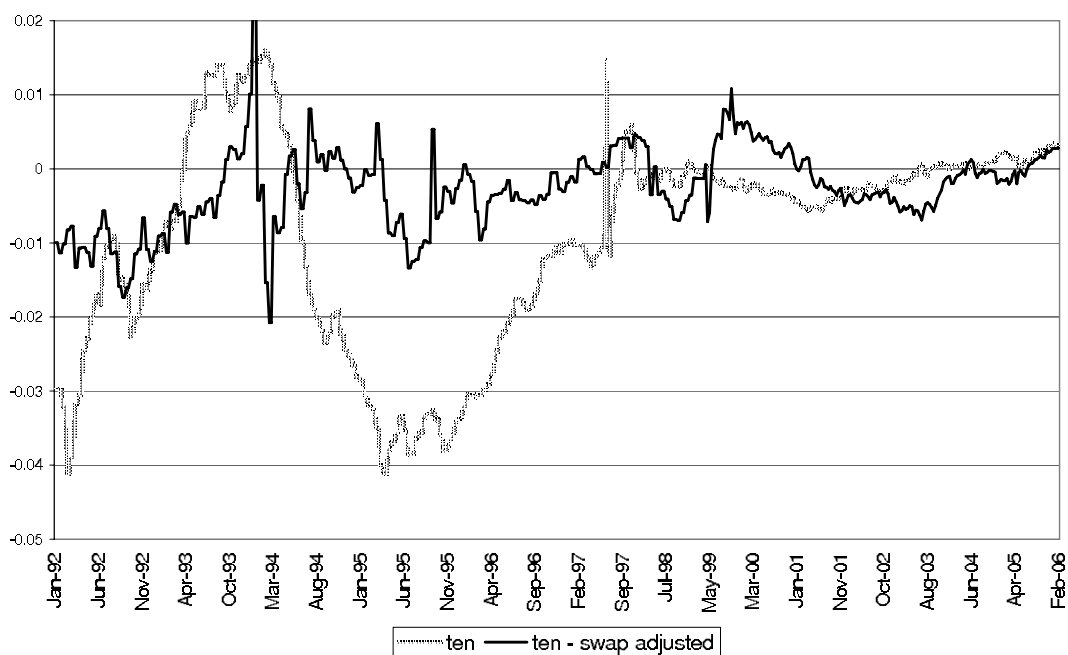


Figure C-18: Evolution of average α of EMU countries at a ten days difference. Swap adjusted data vs non-swap adjusted data. Source: Thomson Financial Datastream, own calculations.

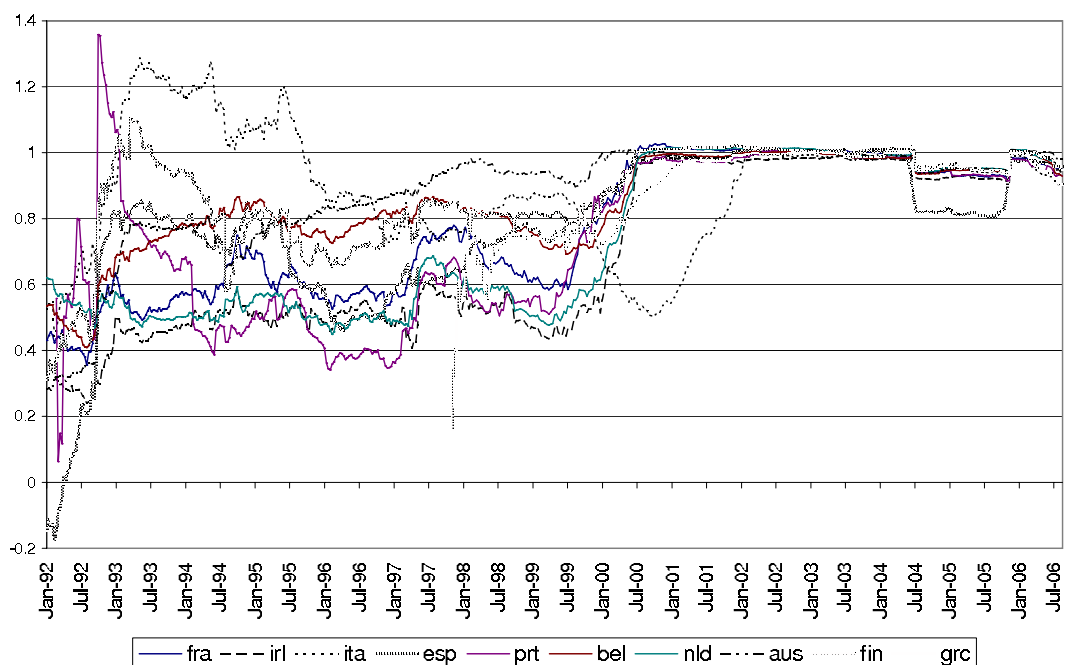


Figure C-19: Evolution of β s of EMU countries. Source: Thomson Financial Datastream, own calculations.

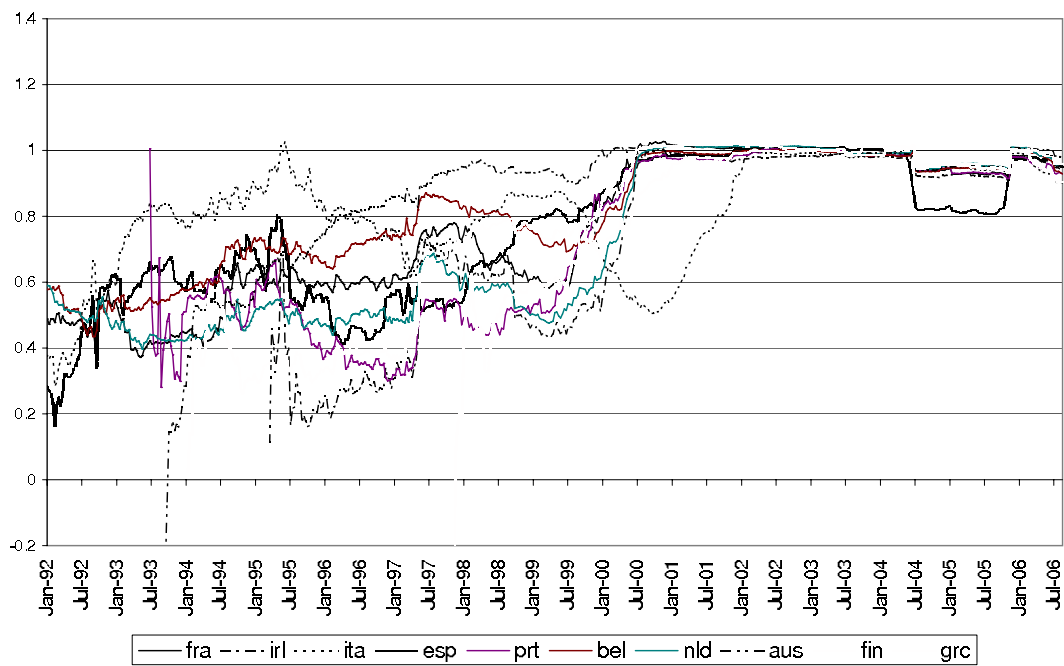


Figure C-20: Evolution of β s of EMU countries. Yields are adjusted for the swap spread to Germany to account for exchange rate change expectations. Source: Thomson Financial Datastream, own calculations.

The following Discussion Papers have been published since 2007:

Series 1: Economic Studies

01	2007	The effect of FDI on job separation	Sascha O. Becker Marc-Andreas Müндler
02	2007	Threshold dynamics of short-term interest rates: empirical evidence and implications for the term structure	Theofanis Archontakis Wolfgang Lemke
03	2007	Price setting in the euro area: some stylised facts from individual producer price data	Dias, Dossche, Gautier Hernando, Sabbatini Stahl, Vermeulen
04	2007	Unemployment and employment protection in a unionized economy with search frictions	Nikolai Stähler
05	2007	End-user order flow and exchange rate dynamics	S. Reitz, M. A. Schmidt M. P. Taylor
06	2007	Money-based interest rate rules: lessons from German data	C. Gerberding F. Seitz, A. Worms
07	2007	Moral hazard and bail-out in fiscal federations: evidence for the German Länder	Kirsten H. Heppke-Falk Guntram B. Wolff
08	2007	An assessment of the trends in international price competitiveness among EMU countries	Christoph Fischer
09	2007	Reconsidering the role of monetary indicators for euro area inflation from a Bayesian perspective using group inclusion probabilities	Michael Scharnagl Christian Schumacher
10	2007	A note on the coefficient of determination in regression models with infinite-variance variables	Jeong-Ryeol Kurz-Kim Mico Loretan

11	2007	Exchange rate dynamics in a target zone - a heterogeneous expectations approach	Christian Bauer Paul De Grauwe, Stefan Reitz
12	2007	Money and housing - evidence for the euro area and the US	Claus Greiber Ralph Setzer
13	2007	An affine macro-finance term structure model for the euro area	Wolfgang Lemke
14	2007	Does anticipation of government spending matter? Evidence from an expectation augmented VAR	Jörn Tenhofen Guntram B. Wolff
15	2007	On-the-job search and the cyclical dynamics of the labor market	Michael Krause Thomas Lubik
16	2007	Heterogeneous expectations, learning and European inflation dynamics	Anke Weber
17	2007	Does intra-firm bargaining matter for business cycle dynamics?	Michael Krause Thomas Lubik
18	2007	Uncertainty about perceived inflation target and monetary policy	Kosuke Aoki Takeshi Kimura
19	2007	The rationality and reliability of expectations reported by British households: micro evidence from the British household panel survey	James Mitchell Martin Weale
20	2007	Money in monetary policy design under uncertainty: the Two-Pillar Phillips Curve versus ECB-style cross-checking	Günter W. Beck Volker Wieland
21	2007	Corporate marginal tax rate, tax loss carryforwards and investment functions – empirical analysis using a large German panel data set	Fred Ramb

22	2007	Volatile multinationals? Evidence from the labor demand of German firms	Claudia M. Buch Alexander Lipponer
23	2007	International investment positions and exchange rate dynamics: a dynamic panel analysis	Michael Binder Christian J. Offermanns
24	2007	Testing for contemporary fiscal policy discretion with real time data	Ulf von Kalckreuth Guntram B. Wolff
25	2007	Quantifying risk and uncertainty in macroeconomic forecasts	Malte Knüppel Karl-Heinz Tödter
26	2007	Taxing deficits to restrain government spending and foster capital accumulation	Nikolai Stähler
27	2007	Spill-over effects of monetary policy – a progress report on interest rate convergence in Europe	Michael Flad
28	2007	The timing and magnitude of exchange rate overshooting	Hoffmann Sondergaard, Westelius
29	2007	The timeless perspective vs. discretion: theory and monetary policy implications for an open economy	Alfred V. Guender
30	2007	International cooperation on innovation: empirical evidence for German and Portuguese firms	Pedro Faria Tobias Schmidt
31	2007	Simple interest rate rules with a role for money	M. Scharnagl C. Gerberding, F. Seitz
32	2007	Does Benford's law hold in economic research and forecasting?	Stefan Günnel Karl-Heinz Tödter
33	2007	The welfare effects of inflation: a cost-benefit perspective	Karl-Heinz Tödter Bernhard Manzke

34	2007	Factor-MIDAS for now- and forecasting with ragged-edge data: a model comparison for German GDP	Massimiliano Marcellino Christian Schumacher
35	2007	Monetary policy and core inflation	Michele Lenza
01	2008	Can capacity constraints explain asymmetries of the business cycle?	Malte Knüppel
02	2008	Communication, decision-making and the optimal degree of transparency of monetary policy committees	Anke Weber
03	2008	The impact of thin-capitalization rules on multinationals' financing and investment decisions	Buettner, Overesch Schreiber, Wamser
04	2008	Comparing the DSGE model with the factor model: an out-of-sample forecasting experiment	Mu-Chun Wang
05	2008	Financial markets and the current account – emerging Europe versus emerging Asia	Sabine Herrmann Adalbert Winkler
06	2008	The German sub-national government bond market: evolution, yields and liquidity	Alexander Schulz Guntram B. Wolff
07	2008	Integration of financial markets and national price levels: the role of exchange rate volatility	Mathias Hoffmann Peter Tillmann
08	2008	Business cycle evidence on firm entry	Vivien Lewis
09	2008	Panel estimation of state dependent adjustment when the target is unobserved	Ulf von Kalckreuth
10	2008	Nonlinear oil price dynamics – a tale of heterogeneous speculators?	Stefan Reitz Ulf Slopek

11	2008	Financing constraints, firm level adjustment of capital and aggregate implications	Ulf von Kalckreuth
12	2008	Sovereign bond market integration: the euro, trading platforms and globalization	Alexander Schulz Guntram B. Wolff

Series 2: Banking and Financial Studies

01	2007	Granularity adjustment for Basel II	Michael B. Gordy Eva Lütkebohmert
02	2007	Efficient, profitable and safe banking: an oxymoron? Evidence from a panel VAR approach	Michael Koetter Daniel Porath
03	2007	Slippery slopes of stress: ordered failure events in German banking	Thomas Kick Michael Koetter
04	2007	Open-end real estate funds in Germany – genesis and crisis	C. E. Banner F. Fecht, M. Tyrell
05	2007	Diversification and the banks’ risk-return-characteristics – evidence from loan portfolios of German banks	A. Behr, A. Kamp C. Memmel, A. Pfingsten
06	2007	How do banks adjust their capital ratios? Evidence from Germany	Christoph Memmel Peter Raupach
07	2007	Modelling dynamic portfolio risk using risk drivers of elliptical processes	Rafael Schmidt Christian Schmieder
08	2007	Time-varying contributions by the corporate bond and CDS markets to credit risk price discovery	Niko Dötz
09	2007	Banking consolidation and small business finance – empirical evidence for Germany	K. Marsch, C. Schmieder K. Forster-van Aerssen
10	2007	The quality of banking and regional growth	Hasan, Koetter, Wedow
11	2007	Welfare effects of financial integration	Fecht, Grüner, Hartmann
12	2007	The marketability of bank assets and managerial rents: implications for financial stability	Falko Fecht Wolf Wagner

13	2007	Asset correlations and credit portfolio risk – an empirical analysis	K. Düllmann, M. Scheicher C. Schmieder
14	2007	Relationship lending – empirical evidence for Germany	C. Memmel C. Schmieder, I. Stein
15	2007	Creditor concentration: an empirical investigation	S. Ongena, G. Tümer-Alkan N. von Westernhagen
16	2007	Endogenous credit derivatives and bank behaviour	Thilo Pausch
17	2007	Profitability of Western European banking systems: panel evidence on structural and cyclical determinants	Rainer Beckmann
18	2007	Estimating probabilities of default with support vector machines	W. K. Härdle R. A. Moro, D. Schäfer
01	2008	Analyzing the interest rate risk of banks using time series of accounting-based data: evidence from Germany	O. Entrop, C. Memmel M. Wilkens, A. Zeisler
02	2008	Bank mergers and the dynamics of deposit interest rates	Ben R. Craig Valeriya Dinger
03	2008	Monetary policy and bank distress: an integrated micro-macro approach	F. de Graeve T. Kick, M. Koetter
04	2008	Estimating asset correlations from stock prices or default rates – which method is superior?	K. Düllmann J. Küll, M. Kunisch
05	2008	Rollover risk in commercial paper markets and firms' debt maturity choice	Felix Thierfelder
06	2008	The success of bank mergers revisited – an assessment based on a matching strategy	Andreas Behr Frank Heid

07	2008	Which interest rate scenario is the worst one for a bank? Evidence from a tracking bank approach for German savings and cooperative banks	Christoph Memmel
08	2008	Market conditions, default risk and credit spreads	Dragon Yongjun Tang Hong Yan
09	2008	The pricing of correlated default risk: evidence from the credit derivatives market	Nikola Tarashev Haibin Zhu
10	2008	Determinants of European banks' engagement in loan securitization	Christina E. Bannier Dennis N. Hänsel
11	2008	Interaction of market and credit risk: an analysis of inter-risk correlation and risk aggregation	Klaus Böcker Martin Hillebrand
12	2008	A value at risk analysis of credit default swaps	B. Raunig, M. Scheicher
13	2008	Systemic bank risk in Brazil: an assessment of correlated market, credit, sovereign and inter-bank risk in an environment with stochastic volatilities and correlations	Theodore M. Barnhill, Jr. Marcos Rietti Souto
14	2008	Regulatory capital for market and credit risk interaction: is current regulation always conservative?	T. Breuer, M. Jandačka K. Rheinberger, M. Summer
15	2008	The implications of latent technology regimes for competition and efficiency in banking	Michael Koetter Tigran Poghosyan

Visiting researcher at the Deutsche Bundesbank

The Deutsche Bundesbank in Frankfurt is looking for a visiting researcher. Among others under certain conditions visiting researchers have access to a wide range of data in the Bundesbank. They include micro data on firms and banks not available in the public. Visitors should prepare a research project during their stay at the Bundesbank. Candidates must hold a PhD and be engaged in the field of either macroeconomics and monetary economics, financial markets or international economics. Proposed research projects should be from these fields. The visiting term will be from 3 to 6 months. Salary is commensurate with experience.

Applicants are requested to send a CV, copies of recent papers, letters of reference and a proposal for a research project to:

Deutsche Bundesbank
Personalabteilung
Wilhelm-Epstein-Str. 14

60431 Frankfurt
GERMANY