

Moral hazard and bail-out in fiscal federations: evidence for the German Länder

Kirsten H. Heppke-Falk

(Deutsche Bundesbank)

Guntram B. Wolff

(Deutsche Bundesbank, University of Pittsburgh, ZEI-University of Bonn)



Discussion Paper
Series 1: Economic Studies
No 07/2007

Discussion Papers represent the authors' personal opinions and do not necessarily reflect the views of the Deutsche Bundesbank or its staff.

Editorial Board: Heinz Herrmann
Thilo Liebig
Karl-Heinz Tödter

Deutsche Bundesbank, Wilhelm-Epstein-Strasse 14, 60431 Frankfurt am Main,
Postfach 10 06 02, 60006 Frankfurt am Main

Tel +49 69 9566-1

Telex within Germany 41227, telex from abroad 414431

Please address all orders in writing to: Deutsche Bundesbank,
Press and Public Relations Division, at the above address or via fax +49 69 9566-3077

Internet <http://www.bundesbank.de>

Reproduction permitted only if source is stated.

ISBN 978-3-86558-284-3 (Printversion)

ISBN 978-3-86558-285-0 (Internetversion)

Abstract:

We identify investor moral hazard in the German fiscal federation. Our identification strategy is based on a variable, which was used by the German Federal Constitutional Court as an indicator to determine eligibility of two German states (Länder) to a bail-out, the interest payments-to-revenue ratio. While risk premia measured in the German sub-national bond market react significantly to the relative debt level of a state (Land), we also find that a larger interest payments-to-revenue ratio counter-intuitively lowers risk premia significantly. Furthermore, with increasing values the risk premia decrease more strongly. This is evidence of investor moral hazard, because a larger indicator value increases the likelihood of receiving a bail-out payment. Quantitatively, the effects are, however, quite small. Our findings are robust to a variety of sample changes. In addition, we provide a case study of the recent Federal Constitutional Court ruling on the Land Berlin, which had filed for additional federal funds. The negative response of the court did not lead to a change in financial markets' bail-out expectations. In sum, our results indicate significant investor moral hazard in the sub-national German bond market.

Keywords: moral hazard, bail-out, sovereign bond spreads, fiscal federalism, Germany

JEL-Classification: F34, G14, G15, E62, H6, H7

Non-technical summary

The effect of expected bail-outs on financial market agents' risk perception is an important topic of research with empirical evidence lagging behind theoretical insights. Theoretical models show that expected bail-outs lead to a moral hazard problem both on the side of the lender as well as on the side of the borrower. The lender has less incentive to demand higher returns compensating for risk arising from fiscally irresponsible governments because the loss in case of default is smaller than without the bail-out. Consequently, the lender is encouraged to take excessive risks, which potentially increases the probability of default. This phenomenon is called "investor moral hazard". On the government side, the incentive to pursue sound public finances is reduced when a bail-out is expected. In particular, after the international financial crises of the mid- and late 1990s, moral hazard in the context of lending to sovereign borrowers has become a major research topic.

In this paper, we analyze investor moral hazard in the German fiscal federation. To do so, we employ an indicator, which was used by the German constitutional court, as a measure of bail-out expectations. In an important ruling in 1992, the court argued that the interest payments-to-revenue ratio can be used as an indicator for financial distress. It relied heavily on this indicator to justify the entitlement to a bail-out for two German states (Länder), Bremen and Saarland. In line with the ruling, financial markets should increase their risk premium in the German sub-national bond market when facing a worsening interest payments-to-revenue ratio, as it should reflect higher default risk. However, if the ratio is taken by financial market participants as an indicator of bail-out payments, we should expect a lower risk premium for a larger ratio. The German fiscal federation thus provides a unique opportunity to directly test for moral hazard.

We show that risk premia react significantly to the relative debt level of a state (Land). Moreover, after controlling for the relative debt level, financial markets significantly react to the indicator variable by reducing risk premia. Furthermore, risk premia decrease over-proportionally with an increasing indicator suggesting increased bail-out expectations. These results therefore provide strong evidence for investor moral hazard in the German federation. Quantitatively, the risk-augmenting effects of a debt increase are quite small, amounting to less than 5 basis points *ceteris paribus* for a debt increase of

1000 Euro per capita. The increase in the spread is to a large part offset by investor moral hazard, if the debt increase results in a higher interest burden.

In addition, we present a case study of the recent Federal Constitutional Court ruling on the Land Berlin, which had filed for additional federal funds. The negative response of the court did not lead to a change in financial markets' bail-out expectations.

Nicht-technische Zusammenfassung

Die Auswirkungen erwarteter Rettungsmaßnahmen - so genannter Bail-outs - auf die Risikoeinschätzung der Finanzmarktakteure ist ein wichtiges Forschungsfeld, in dem die empirischen Belege noch hinter den theoretischen Erkenntnissen zurückbleiben. Theoretische Modelle zeigen, dass die Erwartung von Hilfeleistungen zu Moral-Hazard-Problemen seitens des Kreditgebers wie auch des Kreditnehmers führt. So hat der Kreditgeber einen geringeren Anreiz, höhere Renditen zum Ausgleich für das Risiko finanzpolitisch verantwortungslos agierender Regierungen zu verlangen, da der Verlust bei einem Ausfall geringer ist als ohne das Bail-out. Folglich wird der Gläubiger ermutigt, übermäßige Risiken einzugehen, was die Ausfallwahrscheinlichkeit potenziell erhöht. Dieses Phänomen wird als "Gläubiger-Moral-Hazard" bezeichnet. Aufseiten der Regierung nimmt der Anreiz für eine solide Finanzpolitik ab, wenn mit einem Bail-out gerechnet wird. Vor allem im Anschluss an die internationalen Finanzkrisen Mitte und Ende der Neunzigerjahre hat sich die Forschung intensiv mit dem Thema des Moral Hazard bei Krediten an staatliche Schuldner befasst.

Im vorliegenden Diskussionspapier wird untersucht, inwieweit Gläubiger-Moral-Hazard im deutschen föderalen Finanzsystem vorhanden ist. Zu diesem Zweck setzen wir einen vom Bundesverfassungsgericht verwendeten Indikator als Messgröße der Bail-out-Erwartungen ein. In einem wichtigen Urteil aus dem Jahr 1992 hat das Bundesverfassungsgericht dargelegt, dass die Zins-Steuer-Quote als ein Indikator für Haushaltsnotlagen genutzt werden kann. Zur Rechtfertigung des Anspruchs der beiden Bundesländer Bremen und Saarland auf Hilfeleistung stützte es sich wesentlich auf diesen Indikator. Im Sinne des Urteils dürften die Finanzmärkte bei einer Verschlechterung der Zins-Steuer-Quote ihre Risikoprämie am subnationalen deutschen Anleihemarkt anheben, da diese Quote ein höheres Ausfallrisiko widerspiegeln sollte. Wenn die Finanzmarktteilnehmer die Quote allerdings als einen Indikator für Hilfeleistungen ansehen, wäre bei einer höheren Quote eine geringere Risikoprämie zu erwarten. Das deutsche föderale Finanzsystem bietet somit eine einzigartige Möglichkeit, das Phänomen des Moral Hazard unmittelbar zu testen.

Wir zeigen, daß Risikoprämien signifikant auf den relativen Schuldenstand eines Bundeslandes reagieren. Ausserdem reagieren Finanzmärkte signifikant auf die Indikatorvariable, und zwar mit einer Senkung der Risikoprämien, nachdem man für den relativen Schuldenstand kontrolliert. Zudem nehmen die Risikoprämien bei einem steigenden Indikator überproportional ab, was auf höhere Erwartungen hinsichtlich eines Bail-out hindeutet. Diese Ergebnisse liefern daher deutliche Hinweise darauf, dass im deutschen föderalen Finanzsystem Gläubiger-Moral-Hazard vorhanden ist. Die Größenordnung der Risikoerhöhung ist allerdings relativ klein. So führt ein Anstieg der pro Kopf Verschuldung um 1000 Euro für sich genommen zu einer Erhöhung der Risikoprämie um weniger als 5 Basispunkte. Diese Erhöhung wird zu einem großen Teil durch Gläubiger-Moral-Hazard wieder aufgewogen, wenn die Verschuldung mit einer höheren Zinslast einhergeht.

Des Weiteren präsentieren wir eine Fallstudie hinsichtlich des kürzlich ergangenen Bundesverfassungsgerichtsurteils zur Klage Berlins auf Zuerkennung von Bundesergänzungszuweisungen. Der abschlägige Bescheid des Gerichts führte nicht zu veränderten Bail-out-Erwartungen an den Finanzmärkten.

Contents

1	Introduction	1
2	Methodology	3
2.1	A testable framework	3
2.2	The bail-out indicator	5
2.3	Remaining data	7
3	Results	9
3.1	Baseline results	9
3.2	Robustness checks	12
4	The case of Berlin	13
5	Conclusions	16
	References	18
A	Appendix	20

List of Tables

1	Estimation results	11
2	Estimation results	14
3	Länder codes	20
4	Financial market statistics of German Länder	22
5	Statistics of German Länder	23
6	Ratios	24
7	Robustness check I	25
8	Robustness check II	26
9	Robustness check III	27
10	Robustness check IV	28

List of Figures

1	Representative yield spread of Berlin – 2006	15
2	Bid-ask spread	21
3	Interest rate spreads	21
4	Interest payments-to-revenue ratio	22

Moral hazard and bail-out in fiscal federations: Evidence for the German Länder¹

1 Introduction

The effect of expected bail-outs on financial market agents' risk perception is an important topic of research with empirical evidence lagging behind theoretical insights. An investor believing in a bail-out is encouraged to underprice risks leading to investor moral hazard. In particular, after the international financial crises of the mid- and late 1990s, moral hazard in the context of lending to sovereign borrowers has become a major research topic.² We contribute to this literature by identifying moral hazard in the German federation. Our identification strategy is based on a variable, which was used by the German Federal Constitutional Court as an indicator to determine eligibility of two German states (Länder) to a bail-out.

In this historically important bail-out procedure, two German Länder of the German fiscal federation, Bremen and Saarland, turned to the Federal Constitutional Court to force the federal government to provide bail-out transfers (see Seitz (1999) for a detailed description). These were granted 4 years later in a ruling in 1992. The court decided that both states were in a situation of “extreme budgetary distress” justifying a substantial bail-out on the basis of the loyalty principle (“Bundestreue”) of the German federation.³ To our knowledge, no study so far has investigated the consequences of this important

¹Authors: Kirsten H. Heppke-Falk, Deutsche Bundesbank and Guntram B. Wolff, Deutsche Bundesbank, University of Pittsburgh, ZEI-University of Bonn; email: guntram.wolff@bundesbank.de. The opinions expressed in this paper do not necessarily represent the views of the Deutsche Bundesbank or its staff. We thank Markus Kolb for providing us with the capital market data, André Harms for relevant information in detail on these data, and Alexander Schulz for significant help with the liquidity measure. Ben Craig, Jürgen Hamker, Wolfgang Lemke, Heinz Herrmann, Alexander Schulz, Dan Stegarescu and Karsten Wendorff provided invaluable comments and discussions. The usual disclaimer applies.

²Corsetti, Pesenti, and Roubini (1999) provide an interpretation of the Asian crisis as a result of moral hazard-induced over-investment, excessive external borrowing, and large current account deficits. Lane and Phillips (2000), e.g., show in an event study that IMF lending might contribute to some degree of moral hazard. Dell’Ariccia, Schnabel, and Zettelmeyer (2006) provide empirical evidence for declining investor moral hazard after the surprising non-bail-out in the Russian crisis of 1998.

³For more details on the German federal system, see Seitz (2000). Rodden (2005) finds moral hazard on the borrower side in the German federation.

ruling on risk perception in the German sub-national bond market.⁴

We identify investor moral hazard in the German fiscal federation with the indicator used by the German constitutional court. The court argued that the interest payments-to-revenue ratio is a proxy for extreme financial distress and relied heavily on this indicator to justify the entitlement to a bail-out. Accordingly, financial markets should increase their risk premium in the German sub-national bond market when facing a worsening interest payments-to-revenue ratio, reflecting higher default risk. However, if the ratio is taken by financial market participants as an indicator of larger bail-out payments, we should expect a lower risk premia for a larger ratio. The German fiscal federation thus provides a unique opportunity to directly test for moral hazard. We are able to show that financial markets significantly react to the indicator variable by asking for lower risk premia. Risk premia decrease over-proportionally with an increasing indicator suggesting increased bail-out expectations. These results therefore provide strong evidence for investor moral hazard in the German federation. Furthermore, risk premia react significantly to the relative debt level of a state (Land).

The analysis is supplemented by a closer investigation of Berlin. The Land Berlin recently claimed, similar to Saarland and Bremen in the late 1980s, that it is in financial distress. It asked the constitutional federal court to rule in favor of federal funds alleviating its situation. The court rejected the claim in October 2006. We perform an additional regression analysis restricted to data of Berlin. If Berlin is indeed in serious trouble, financial markets should pay closer attention to its state of public finance and react strongly to fiscal fundamentals and the bail-out measure. Indeed, we find that our previous regression results are confirmed with even larger coefficients hinting to non-linear effects. An event study to detect financial market reactions to the October ruling shows that the ruling did not change bail-out expectations. Overall, the case of Berlin thus confirms that financial markets are subject to investor moral hazard.

Previous literature on moral hazard in fiscal federations shows that moral hazard depends on the likelihood of bail-outs. In the USA, the moral hazard problem in national lending is small as bail-outs are very rare.⁵ Absent bail-

⁴Lemmen (1999) performs the only regression analysis of the German sub-national bond market and shows that spreads increase with public debt. The paper is limited by the short sample period (1994 – 1996) and definitions of the explanatory variables.

⁵For example, Orange County tried to get California to bail it out in the 1990s and failed.

out expectations might be one reason, why the effects of fiscal variables on risk premia in the US states and municipalities are usually found to be quite strong compared to OECD sample values.⁶ In the European Economic and Monetary Union (EMU) moral hazard is often discussed in the context of changing levels and reactions of risk premia.⁷ Regarding the sensitivity of risk premia to fiscal policy, several studies document a structural break with the beginning of EMU (Bernoth, von Hagen, and Schuknecht (2004), Heppke-Falk and Hüfner (2004), Bernoth and Wolff (2006)).⁸ However, the results do not allow any conclusion on bail-out expectations since the introduction of the euro was anticipated and coincided with a number of institutional changes, e.g., of budgetary institutions (Hallerberg and Wolff 2006).

The remainder of the paper is organized as follows: The next section presents our main hypotheses, the estimation equation and the data. Section 3 presents and discusses our main empirical results. In section 4 we discuss the recent constitutional court ruling on Berlin and provide evidence on its effects on risk premia. The last section concludes.

2 Methodology

2.1 A testable framework

To test for investor moral hazard in the German government bond market, we perform a regression of the interest rate spread between the German Länder and the central government on the bail-out indicator and control variables. Our estimation equation is derived from the following model:⁹ Suppose, an investor has the choice between a risk-free investment, on which he earns a risk-free interest rate of R^* and an investment in a bond of a German Land i , which has a default probability of θ . In case of default, the investor is able to

This bankruptcy caused strong financial losses to investors and led to significant contagion in the US municipal bond market (Halstead, Hedge, and Klein 2004).

⁶However, stronger reaction coefficients might also result from the large labor and capital mobility in US states, which reduce states' tax capacities. For a survey table see Lemmen (1999). Further studies on this topic are, e.g., Capeci (1991, 1994), Bayoumi, Goldstein, and Woglom (1995).

⁷After adjusting the pre-EMU data for the latter, some studies even observe an increase in the average yield spread with EMU (Gómez-Puig 2006). This higher spread level, if anything, provides evidence for *lower* bail-out expectations.

⁸Codogno, Favero, and Missale (2003) deny a structural break.

⁹See also Dell'Ariccia, Schnabel, and Zettelmeyer (2006).

recover a fraction τ of his investment. In a world of risk-neutral investors, the expected return on both investments has to be equal, thus:

$$R^* = \theta\tau R_i + (1 - \theta)R_i \quad (1)$$

This expression can be rewritten in terms of the spread between the risky bond of Land i and the risk-free benchmark bond as

$$R_i - R^* = R^* \frac{\theta l}{1 - \theta l} \approx R^* \theta l \quad (2)$$

where $l = 1 - \tau$ is the fraction of investment lost and where the last approximation holds when the default risk and the loss are very small.

The probability of default $\theta = \theta(X_{it})$ is a function of a number of fundamentals X . These fundamentals include, among others, the public debt level of a Land. Furthermore, the loss on the investment is a function of a potential bail-out. The investor will recover a greater amount of his investment, if the bail-out (b) is larger, thus $l = l(b)$ with $l'(b) < 0$. When linearizing Equation 2, we can derive an estimation equation as

$$R_i - R^* = X_{it}\beta + b_{it}\gamma + u_{it}. \quad (3)$$

Hence, the spread is a function of the fundamentals of a Land and of the amount of the expected bail-out. To capture the latter empirically, we use the indicator that determines the bail-out entitlement of a Land.¹⁰ Investor moral hazard can be shown if the risk premium of a Land is falling with increasing size of the indicator, which reflects stronger market beliefs in a bail-out.

We estimate Equation 4:

$$\begin{aligned} r_{it} - r_t^* &= \alpha_1 \text{fiscal}_{it} + \alpha_2 \text{indicator}_{it} \\ &+ \alpha_3 \text{liquidity}_{it} + \alpha_4 \text{maturity}_{it} + \alpha_5 \text{riskav}_t + \mu_i + \epsilon_{it} \end{aligned} \quad (4)$$

where $r_{it} - r_t^*$ represents the spread between the yield of a bond issued by a German Land r_{it} and the yield of the benchmark issue r_t^* of the Bund at time t .¹¹ Accordingly, we define all fiscal explanatory variables in differences to the federal government. The explanatory factors, which are discussed in further

¹⁰Similarly, Lee and Shin (2004) introduce an indicator to determine bail-out probability by the IMF. Political connections to the IMF as a determinant of bail-out are found to be connected with lower risk premia.

¹¹This measure includes risks associated with outright default, partial default, temporary solvency problems of a Land, and liquidity.

detail below, are the following ones: Fundamental fiscal variables potentially influencing the default probability of a Land (*fiscal*), the variable indicating the entitlement to a bail-out (*indicator*), *liquidity* to capture the influence of the liquidity risk, the variable *maturity* to measure the time to maturity, and *riskav* to capture the risk aversion of the representative investor. μ_i denotes a dummy for Land i to capture Land-specific fixed effects; ϵ_{it} is an error term with the usual iid-properties.

2.2 The bail-out indicator

In 1992, the Federal Constitutional Court decided that Bremen and Saarland were in extreme financial distress and were therefore entitled to substantial bail-out payments amounting to 20 percent of their expenditures. The determination of financial distress was based on two budgetary indicators: the “Finanzierungsquote” (deficit relative to revenue or expenditure) and the “Zins-Steuer-Quote” (interest payments relative to (tax) revenue or expenditure).¹² Our main bail-out indicator is the interest payments on public debt-to-revenue ratio (**interest-to-revenue** ratio hereafter).¹³ As the deficit-to-expenditure ratio (or deficit-to-revenue ratio) is highly positively correlated with the deficit per capita variable, the effect of a deteriorating public finance situation cannot be separated from the effect of more likely bail-out payments. The latter ratio is thus not a suitable indicator for identifying bail-outs.¹⁴ The evolution of the bail-out indicator is shown in Table 6 and Figure 4. While for many states we observe an increase in the interest-to-revenue ratio, some states (SD, NW, HE, BY)¹⁵ also experienced declining ratios.

We expect that an increase in the interest-to-revenue ratio results in an increase of the bail-out probability, which in turn should result in lower risk premia. We do not assume a break in this relationship at a specific size of our bail-out indicator as the Federal Constitutional Court does not define a clear numerical threshold of the interest-to-revenue ratio, at which a Land is

¹²BVerfGE 86, 148-Finanzausgleich II, 322.

¹³The court includes in the definition of the denominator the transfers from the Länder revenue equalization system (Länderfinanzausgleich) and general supplementary transfers from the central government (Bundesergänzungszuweisungen).

¹⁴A regression of the deficit per capita ratio on the deficit-to-expenditure ratio reveals a strong positive correlation and an R^2 exceeding 0.86.

¹⁵Table 3 in the appendix enlists the abbreviations.

in a situation of financial distress.¹⁶ However, we do allow for possible non-linear effects in our regression analysis since with an increasing ratio a bail-out becomes increasingly likely.

The risk-reducing effect of a potential bail-out identified by the interest-to-revenue ratio needs to be empirically distinguished from the greater probability of financial loss of highly indebted Länder. Obviously, a Land with a high debt level has to pay a large amount of interest payments. A regression omitting the interest-to-revenue ratio will falsely attribute the bail-out effect to the debt variable, thereby biasing the risk increasing effect of debt downward. The debt level of a Land is, however, not a perfect predictor of its interest payments. Substantial differences in debt management and different times of debt issuance result in different interest payments.¹⁷ Moreover, the Land specific annual implicit interest rates in terms of the interest payments-to-debt ratio show a heterogenous picture. The highest and the lowest implicit interest rate during a given year differ by one percentage point. In 2005, for instance, the Land with the lowest implicit interest rate pays 4 percent on its debt, while the Land with the largest payment pays 5 percent, a 25 percent difference. Furthermore, for a number of Länder, the position of a Land relative to the other Länder with respect to its implicit interest rate changes substantially.

Irrespective of its positive connection with fiscal fundamentals, the interest-to-revenue ratio contains information differing from the usual variables determining risk premia such as the debt and deficit levels. While large interest payments as a ratio to revenue as such are clearly a sign of bad fiscal health and should therefore result in larger risk premia, they should be a sign of increased bail-out expectations once one controls for the debt level of a Land. *Ceteris paribus*, the interest-to-revenue ratio is thus an indicator of bail-out and should result in lower risk premia at a given debt level in the presence of investor moral hazard.

¹⁶BVerfGE 86, 148-Finanzausgleich II, 323: "[...] Welche einzelne Quote oder welche Kombination der Quoten ab welcher Grösse eine Haushaltsnotsituation präzise definieren, kann hier offenbleiben. [...]"

¹⁷This can be seen when performing a fixed effects regression of the interest payments on the debt level. The within- R^2 is less than 0.5, which points to substantially different evolutions in time of these two variables.

2.3 Remaining data

The government bond data are taken from Capital Data Bondware and range from 1993 to 2005. They include information on features of government bonds of the 16 German Länder such as the yield to maturity at issue, the maturity itself, the underlying currency, the volume, and the announcement date (see Table 4 for an overview of average data for 2005).¹⁸ Moreover, central government (Bund) benchmark bonds with the same coupon payment structure, an issuing date close to the comparable bond of the Land, and an equivalent maturity are matched to the Länder issues. The yield spread is measured as the difference in the yield to maturity at the time of issue between the Land bond under consideration and the equivalent German central government bond. Figure 3 in the appendix plots the yield spreads of bond issues over time. We see a strong co-movement of the interest rate spreads.

Fiscal data are provided by the Federal Statistical Office Germany.¹⁹ Estimations are carried out with debt and deficit expressed as per capita ratios, from which the corresponding per capita data of the Bund are subtracted. Per capita values were chosen to reflect the German fiscal federal system, in which financial resources of a Land are largely determined by the population size as revenue equalization across states is based on the number of residents.²⁰ Table 5 provides descriptive statistics of debt, GDP and inhabitants of the German Länder.

In addition to the default risk premium, the spread comprises a liquidity premium, reflecting the risk of not being able to sell an asset in due time. It is well captured by trading costs compensating market makers for providing

¹⁸Bonds are denominated in Deutsche Mark (DM) before 1999 and subsequently in euros. We dropped joint Länder issues (Länderschatzanweisungen) amounting to 21, resulting in 127 Land specific observations after split up. As they have the same issuance conditions across the Länder, they are not suitable for detecting effects of Land characteristics.

¹⁹State and local government data – the latter including special-purpose associations data except for the year 2005 – are consolidated. The annual cash data are adjusted to ESA standards by removing loans repayed/granted and sales/acquisitions of equity. Data on GDP and inhabitants are taken from the website of the statistical offices of the Bund and of the Länder. Statistische Ämter des Bundes und der Länder at [http : //www.vgrdl.de/Arbeitskreis_VGR/](http://www.vgrdl.de/Arbeitskreis_VGR/).

²⁰At least 75% of VAT income belonging to the Länder is distributed according to the number of residents. Moreover, for the calculation of financial equalization needs and provisions in the Länder revenue equalization system (Länderfinanzausgleich) the number of inhabitants of some Länder is raised fictitiously. This procedure is justified by additional financial requirements per resident in these regions.

immediacy with respect to the match of the supply of and the demand for a specific security (Grossman and Miller 1988). Bid-ask spreads have proved to be appropriate proxies for liquidity risk as they properly reflect such trading costs (see in this context, e.g., Flemming (2003), Elton and Green (1998), and Gómez-Puig (2006)). We decided to employ the average bid-ask spread during the year following the emission of the bond calculated on the basis of daily data. Figure 2 plots the bid-ask spread of a joint bond of several Länder. The mean average bid-ask spread in our sample is 1.29 basis points, with a maximum average bid-ask spread of 6.29 basis points for a 1995 emission of Land Saxony-Anhalt. Moreover, we included the issue size as an alternative proxy for liquidity as the latter increases with the volume. However, the coefficient turned out to be insignificant and is therefore not reported here.

One important determinant of yield spreads is the general investors' risk aversion towards credit risk. Since investors' risk aversion is not directly observable, we use, similar to Codogno, Favero, and Missale (2003), Favero and Giavazzi (2004) and Bernoth, von Hagen, and Schuknecht (2004), the yield spread between low-grade US corporate bonds (BBB) and benchmark US government bonds (AAA) as an empirical proxy.²¹ A rise in this spread indicates an increase in the investors' risk aversion, and vice versa. With this measure we also capture the co-movement of the spreads in time.

Since our data set contains bond issues with different maturities, we control for *maturity*, which measures the time to maturity of the bonds at the time of issue. We expect that an investor demands a compensation for investing in long-term bonds as the default risk increases with time to maturity. The increase in the compensation for low-grade bonds should be larger than for highly graded bonds.

In addition, we perform further regressions to control for the size of the different Länder. To do so, we include the number of inhabitants measured in thousands. We expect larger states to pay lower risk premia for several reasons. First, larger states are of greater relevance to the financial system as a whole, a non-bail-out is therefore less likely (too big to fail). Second, larger states are less likely to be subject to a big shock as their economies are more diversified.

Moreover, we control for a potential structural break due to the introduc-

²¹Corresponding data for the E(M)U are firstly available from 2002 onwards. Risk aversion is, however, highly correlated across markets.

tion of the Euro, which could have facilitated access to the European capital market by introducing an EMU dummy.²²

3 Results

3.1 Baseline results

Table 1 presents our main estimation results. In line with our hypothesis, the bail-out indicator (the interest payments-to-revenue ratio) is a highly significant negative determinant of risk premia (Regression B). Thus, given a certain debt level, financial markets will demand less risk premium from a country with a higher interest payments-to-revenue ratio. If a large interest burden is indeed a sign of financial distress as the supreme court implied by its ruling, a higher interest payments-to-revenue ratio should increase default risk premia instead of lowering them.

However, according to our results, financial markets seem to believe that a larger interest payments-to-revenue ratio reduces default risk. This counter-intuitive effect can be explained by the ruling of the constitutional court enabling a bail-out. By openly using this ratio as a criterion to determine financial distress and thereby to grant to a Land the right to receive federal aid, the supreme court explicitly indicates to financial markets that Länder with large interest-to-revenue ratios are in fact less risky. Moreover, financial markets might reward very large interest-to-revenue ratios over-proportionally as a bail-out is even more likely. This suggests that the coefficient on the squared interest-to-revenue ratio should be negative, a prediction confirmed in regression C. Both regressions B and C thus lend strong support to the moral hazard hypothesis.

Furthermore, we also find our predictions on the debt per capita variable confirmed. Larger values are significantly increasing risk premia. Moreover, the regression coefficient more than doubles after appropriately controlling for the bail-out indicator. Apparently, in regression A the debt coefficient is downward biased by the omitted bail-out indicator. Thus, in regression A the coefficient gives a mixed result of the debt variable, which increases risk premia, and the correlated interest payments, which lower risk premia through

²²The EMU dummy captures the period after 1998; observations in this time span (131) exceed those before 1999 (38) by far as Länder recently rely more heavily on bonds to finance deficits. We do not report the EMU coefficient in the tables.

moral hazard.

We also test for possible non-linear effects of public debt per capita. We expect that risk premia should increase over proportionally with debt, so that the coefficient on the squared term should be positive. Our empirical results in regression E confirm this. The positive coefficient on the squared debt term indicates that risk premia increase over-proportionally with public debt. In their sample of US states, Bayoumi, Goldstein, and Woglom (1995) interpret this over-proportional increase as an indication of functioning market discipline since access to new credit will become increasingly difficult. However, as regards our results, the estimated coefficient is – while significant – relatively small suggesting that disciplining effects are weak.

Quantitatively, the effects of changing debt and interest payment levels are as follows. An increase of the debt per capita level by 1000 Euros will increase the risk premium by 4.6 basis points (regression B). At the same time an increase of the interest payments-to-revenue ratio by one percentage point has a risk premium reducing effect of 2.5 basis points. Thus, a Land worsening its interest payments to revenue ratio by 25 percent from the mean of 8 percent to 10 percent will improve its risk premium by 5 basis points. This increase corresponds to a move from the lowest (4 percent) to the highest (5 percent) implicit interest rate as documented in the previous section 2.2. The increase of the risk-premium due to a higher debt level will be partly offset by the risk reducing effect of larger interest payments. Suppose the average state would increase its per capita debt by 1000 Euros and would have to pay the average implicit interest rate. This would lead to an increase of the interest-to-revenue ratio by 1.2 percentage points, which would lower the risk premium by roughly 3 basis points. The overall increase in the risk premium would amount to $1.6 = 4.6 - 3$. Our estimation results thus document significant financial market reactions of risk premia, which are, however, relatively small compared to the actual interest rates.

The deficit per capita variable is an insignificant determinant of risk premia in all regressions. Thus, a worsening fiscal position apparently does not increase risk premia. The weak effect of deficits might be caused by two opposing driving forces. On the one hand, a large deficit implies a worsening of the fiscal position of a Land. On the other hand, the supreme court relied on the deficit to revenue ratio as an indicator for financial distress, making a bail-out more likely. This in turn would imply lower risk premia. These two

Table 1: Determinants of risk premia of German Länder

	A	B	C	D	E
debt per capita	2.09	4.62	6.42	4.59	4.08
	1.88	3.15	3.94	2.42	2.19
deficit per capita	2.91	4.41	4.52	5.08	5.30
	0.89	1.35	1.41	1.59	1.69
bid-ask	3.57	3.48	3.53	3.41	3.01
	2.88	2.87	2.96	2.87	2.57
maturity	1.80	1.93	1.79	1.75	1.49
	6.95	7.44	6.83	6.70	5.48
riskav	0.17	0.15	0.14	0.13	0.15
	6.16	5.31	4.81	4.43	5.12
interest payments/revenue		-250.18	-671.83	-597.85	-813.17
		-2.59	-3.35	-2.95	-3.82
(interest payments/revenue) ²			-2392.07	-2049.70	-3632.00
			-2.39	-2.03	-3.18
inhabitants				-0.02	-0.05
				-1.85	-3.22
debt per capita ²					0.0006
					2.76
N	169	169	169	169	169
R ²	0.54	0.56	0.57	0.58	0.60

Notes: Dependent variable: yield spread measured as spread between yield to maturity at issue of a country bond and a comparable benchmark bond of the Bund in basis points. Maturity in years. All regressions include Länder dummies not shown here. t-values below bold coefficients.

effects might cancel each other out resulting in insignificant deficit coefficients.

As pointed out above, we cannot separate these two effects empirically.

Regarding the control variables, we find previous results confirmed. Our proxy for liquidity, the bid-ask spread, drives the yield spread between Länder and the Bund significantly up, reflecting the importance of the liquidity premium. Moreover, spreads significantly increase with the time to maturity of the bond. Furthermore, risk premia increase when our proxy for risk aversion (*riskav*) increases. The population size of a Land (inhabitants) also has the expected sign and is a significant negative determinant of default risk. The included Länder dummies are also found to be significant.

3.2 Robustness checks

In addition to our main estimations, we carried out several robustness checks. An obvious criticism of our findings is that Länder with large debt levels shoulder great interest payment burdens. Our estimation results might therefore be artificially generated by including a variable positively correlated with debt in the regression. To lend further support to our hypothesis, we estimate the same regression, but replace the interest payments-to-revenue ratio by the interest payments-to-GDP ratio (Regression A in Table 7). If the negative coefficient resulted from the positive correlation between debt and interest payments, this regression should equally exhibit a positive coefficient for the debt and a negative for the interest-to-GDP ratio. As regression A shows, the interest payments-to-GDP ratio is not a significant determinant of risk premia. This confirms our view that the negative coefficient of the interest payments-to-revenue ratio is driven by the fact that markets consider this variable as an indicator and believe in bail-out. It is not driven by the described positive correlation. We are therefore confident that the estimation results reflect the risk assessment of financial market participants and provide strong evidence for investor moral hazard.

In a first check on sub-sample stability of our results (I), the five new East-German Länder are dropped from our panel as they started with low debt levels after the German re-unification and received considerable transfers from the central government and EU cohesion funds. Old and new Bundesländer might therefore face a different risk perception by financial market agents. The results (Table 7, regressions B-F) are, however, very similar to those of the main estimations, indicating sub-sample stability.

In a further check (II), we drop the city states as they have a special position in the German fiscal federal system. Moreover, compared to non-city states, they are high debt-per-capita Länder exceeding 10 thousand euros by far. As debt in our regressions is normalized by the real population size, it is larger than it would be in the Länder equalization scheme, which assumes larger populations due to larger financing needs of city states (see Footnote 20). Thus, debt relative to true financial resources for the city-states is de facto smaller than the debt per capita variable used in the baseline regressions. We therefore expect the debt coefficient size to be larger if the city states are excluded. Indeed, after having dropped Berlin, Bremen, and Hamburg, debt per capita drives risk premia significantly up with a larger estimated coefficient

(see Table 8). The coefficient on the indicator variable is again similar to our benchmark regressions.

In a third robustness check, we constrain the data set to maturities between 5 and 10 years. We excluded observations with a maturity of less than 5 years as we are in particular interested in the long-run default risk. Moreover, for maturities above 10 years many maturities up to 30 years are not covered by an emission. The results differ only slightly from the baseline regression (see Table 9).

Finally, we perform instrumental variable regressions to address potential endogeneity concerns (Table 10). In fact, interest payments might be endogenous to the spread at launch, as the risk premium is a part of the interest payments. However, the effect is probably quite small, since only a small fraction of debt is rolled over in a given year. Nevertheless, we want to be sure that our results are not driven by this effect. We therefore instrument the interest payments-to-revenue ratio and the interest payments-to-GDP ratio by their first lag. These lagged values should be good instruments as they are not determined by future risk premia but highly correlated with future interest payments (as confirmed by the first stage regressions). The IV regressions fully confirm our previous analysis. We even find somewhat stronger effects of moral hazard. Altogether, the robustness checks thus confirm the baseline regressions with regard to our main variables.

4 The case of Berlin

This section provides a more detailed analysis of risk premia in Berlin for two reasons. First, Berlin is suffering from a very unfavorable budgetary performance (see Table 5).²³ Second, Berlin's financial difficulties in 2003 culminated in a claim to financial aid, resulting in a ruling on 19 October 2006.²⁴ Accordingly, we first present a regression analysis restricted to the observations of Berlin to detect, whether financial markets are particularly vigilant with a "Land" in difficulties, which in the above analysis we tried to capture

²³It has the second highest interest payments-to-revenue ratio in 2005 and the highest growth rate of per capita debt among the 16 Länder between 2000 and 2005. The 2005 average yield spread between Berlin-bonds and corresponding high-quality-benchmark bonds issued by the federal government is the third largest (see Table 4), which may go back to a relatively high default risk perception.

²⁴In 2003, Berlin's senate applied for a decision on the existence of extreme financial distress at the supreme court, which would have been the basis for financial aid.

with non-linear effects. In a second step, we look at the impact of the court procedures on financial market’s risk assessment.

Since the state of Berlin itself was filing for financial aid, an additional regression analysis restricted to observations of Berlin might provide further insights into investor moral hazard. In Table 2, we present the regression re-

	A	B
debt per capita	-1.57	20.27
	-0.68	3.44
deficit per capita	-27.55	-39.45
	-1.66	-3.11
bid-ask	0.53	0.95
	0.23	0.56
maturity	1.51	1.04
	1.96	1.78
riskav	0.36	0.65
	2.99	5.59
interest payments/revenue		-1867.75
		-3.87
cons	-39.67	-214.85
	-1.99	-4.51
N	23	23
R^2	0.67	0.83

Notes: Dependent variable: yield spread measured as spread between yield to maturity at issue of a Berlin bond and a comparable benchmark bond of the Bund in basis points. Maturity in years.

sults of estimations carried out as before. As can be seen, the main regression results remain valid. The interest-to-revenue ratio exercises a highly significant and negative effect on the risk premium. Its coefficient size is larger than in the previous regression analysis, suggesting that in the case of Berlin financial markets paid particular attention to the fiscal distress indicator of the supreme court. The large coefficient size is also in line with the non-linear effects identified above and indicates that Berlin is on the “steeper” parts of the risk premia reaction function.

Somewhat surprising, the deficit per capita variable is now significant and negative, while it was insignificant before. In the panel regression, we argued that the two effects related to the deficit – the deterioration of the “Land”’s public finances and the increased likelihood of a bail-out – might cancel each

other out and could not be empirically distinguished. For Berlin, the increased likelihood of a bail-out effect appears to dominate in the data. This lends further support to our hypothesis that financial markets carefully watch the indicators of bail-out probability and accordingly reduce their risk assessment.

The Federal Constitutional Court in its decision of 19 October 2006 denied the existence of an extreme financial distress, which would have been the basis for Berlin's claim. The spread of Berlin's bonds could have increased or decreased. On the one hand, the Federal Constitutional Court made clear that Berlin is currently not in a situation of fiscal distress. It furthermore did not exclude the possibility of a bail-out. This might have contributed to a lowering of the risk premium. On the other hand, financial markets might have expected a decision supporting Berlin's claim for additional funds. In this case, the decision represents a negative surprise potentially raising the risk premium on Berlin's debt.

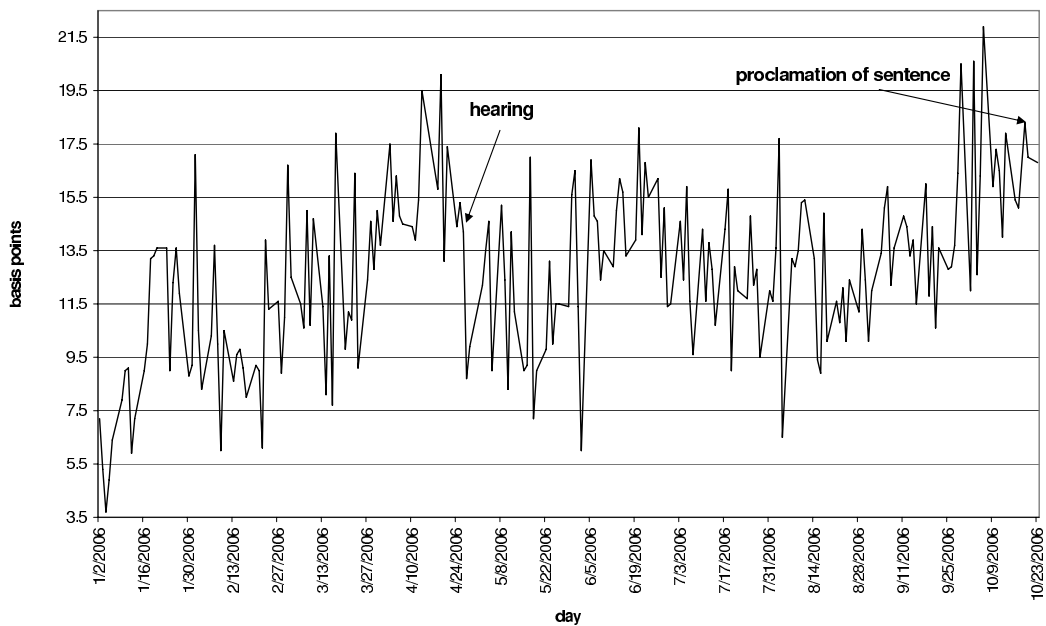


Figure 1: Yield spread between a Berlin and a central government bond in 2006

We descriptively investigate whether the time of the hearing, which took place on 26 April 2006, or the decision of the court itself on 19 October 2006 represents relevant news to financial markets changing their risk assessment. Figure 1 illustrates the development of the spread between the yield of a representative Berlin-bond²⁵ and the current yield of central government bonds

²⁵The Berlin-bond has the ISIN DE000A0BNQX7. It was issued in September 2004 with

with an equivalent residual term. Over the year 2006, the spread shows a slight upward trend: The average monthly spread raised from 15 basis points (bps) in April 2006 to 16.5 bps in October 2006. On the first day after the hearing, the yield spread fell from above 14 to almost 9 bps, potentially showing a lowering of Berlin's risk. In October, the spread varied largely. The impact of the proclamation of sentence on 19 October was negligible: The spread fell from 18 bps to almost 17 bps on 23 October. In summary, court proceedings affected the risk premium on Berlin's bond yields only marginally at best, and that negatively. Thus, the court's proceedings did not alter bail-out expectations, given that no new information on the fiscal fundamentals were released on these days. This outcome confirms the estimation results for the period before 2006.

5 Conclusions

We tested for investor moral hazard in government bonds issued by the 16 German Länder between 1993 and 2005. For this purpose, debt and fiscal balance per capita and an indicator – the interest payments-to-revenue ratio – used by the Federal Constitutional Court to decide whether a Land is in a situation of financial distress entered our estimation equation. We revealed debt per capita and the interest payments-to-revenue ratio as statistically significant determinants of the default risk premium. While debt per capita affects the premium positively, the interest payments-to-revenue ratio has a counter-intuitive negative sign. What could be the reason for this outcome? We suggest that financial market agents link a higher ratio with a de facto *smaller* default risk as a bail-out in terms of additional financial aid by the central government, the Bund, becomes more likely. This hypothesis is further supported by a non-linear reaction of spreads: with an increasing indicator risk premia are reduced over-proportionally. This is evidence for investor moral hazard.

Furthermore, we reveal the importance of liquidity risk: Liquidity, here measured as bid-ask spread, drives the interest rate spread between the German Länder and the Bund up. Moreover, the corporate bond spread, which captures the risk attitude of the representative investor, and the maturity affect the interest rate spread also positively. All results hold after robustness checks with respect to sample changes addressing the special features of the

a maturity of 10 years and amounted to 2 billion euros.

five new member states as well as of the city-states, different maturities, and endogeneity problems.

A further detailed study of Berlin was performed as it faces a poor budgetary performance compared to the other Länder and recently filed for federal funds, a claim rejected by the constitutional court. The effects of the bail-out indicator and fiscal variables are stronger: The coefficients of debt per capita and of the interest payments-to-revenue ratio are much larger in absolute terms than in the whole sample. Furthermore, and in contrast to the panel regressions, deficit per capita becomes statistically significant, and that with a negative sign. Obviously, in the case of Berlin, bail-out expectations overcompensate the opposite effect of deteriorating public finances. This supports the investor moral hazard hypothesis. Furthermore, we show that the court procedures did not alter bail-out expectations. In sum, Berlin's data thus confirm investor moral hazard in Germany.

References

- BAYOUMI, T., M. GOLDSTEIN, AND G. WOGLOM (1995): “Do Credit Markets Discipline Sovereign Borrowers? Evidence from U.S. States,” *Journal of Money, Credit, and Banking*, 27 (4), 1046–1059.
- BERNETH, K., J. VON HAGEN, AND L. SCHUKNECHT (2004): “Sovereign Risk Premia in the European Government Bond Market,” *ECB Working paper*, 369.
- BERNETH, K., AND G. B. WOLFF (2006): “Fool the Markets? Creative Accounting, Fiscal Transparency and Sovereign Risk Premia,” *Deutsche Bundesbank Discussion paper*, 2006-19.
- CAPECI, J. (1991): “Credit Risk, Credit Ratings, and Municipal Bond Yields: A Panel Study,” *National Tax Journal*, 44 (1), 41–56.
- (1994): “Local Fiscal Policies, Default Risk, and Municipal Borrowing Costs,” *Journal of Public Economics*, 53, 73–89.
- CODOGNO, L., C. FAVERO, AND A. MISSALE (2003): “Yield Spreads on EMU Government Bonds,” *Economic Policy*, pp. 503–32.
- CORSETTI, G., P. PESENTI, AND N. ROUBINI (1999): “Paper Tigers? A Model of the Asian Crisis,” *European Economic Review*, 43(4), 1211–1236.
- DELL’ARICCIA, G., I. SCHNABEL, AND J. ZETTELMAYER (2006): “How Do Official Bailouts Affect the Risk of Investing in Emerging Markets?,” *Journal of Money, Credit, and Banking*, 38(7), 1689–1714.
- ELTON, E. J., AND T. C. GREEN (1998): “Tax and Liquidity Effects in Pricing Government Bonds,” *The Journal of Finance*, 53(5), 1533–1562.
- FAVERO, C., AND F. GIAVAZZI (2004): “Inflation Targeting and Debt: Lessons from Brazil?,” *NBER Working Paper*, No. 10390.
- FLEMMING, M. J. (2003): “Measuring Treasury Market Liquidity,” *Federal Reserve Bank of New York Economic Policy review*, 9, 83–108.
- GÓMEZ-PUIG, M. (2006): “Size Matters for Liquidity: Evidence from EMU Sovereign Yield Spreads,” *Economics Letters*, 90, 156–162.

- GROSSMAN, S. J., AND M. H. MILLER (1988): “Liquidity and Market Structure,” *The Journal of Finance*, 43(3), 617–633.
- HALLERBERG, M., AND G. B. WOLFF (2006): “Fiscal Institutions, Fiscal Policy and Sovereign Risk Premia,” *Deutsche Bundesbank Discussion paper*, 35-2006.
- HALSTEAD, J. M., S. HEDGE, AND L. S. KLEIN (2004): “Oragne County Bankruptcy: Financial Contagion in the Municipal Bond and Bank Equity Markets,” *The Financial Review*, 39, 293–315.
- HEPPKE-FALK, K., AND F. HÜFNER (2004): “Expected Budget Deficits and Interest Rate Swap Spreads - Evidence for France, Germany and Italy,” *Deutsche Bundesbank Discussion Paper Series1*, 40.
- LANE, T., AND S. PHILLIPS (2000): “Does IMF Financing Result in Moral Hazard?,” *IMF working paper*, No. 168.
- LEE, J.-W., AND K. SHIN (2004): “IMF Bailouts and Moral Hazard,” *mimeo*.
- LEMMEN, J. (1999): “Managing Government Default Risk in Federal States,” *FMG Special Paper, Financial Markets Group, London School of Economics*, No 116.
- RODDEN, J. (2005): “And the Last Shall Be First: Federalism and Soft Budget Constraints in Germany,” *Mimeo*.
- SEITZ, H. (1999): “Subnational Government Bailouts in Germany,” *ZEI Working papers, University of Bonn*, B20.
- (2000): “Fiscal Policy, Deficits and Politics of Subnational Governments: The Case of the German Laender,” *Public Choice*, 102, 183–218.

A Appendix

Table 3: Meaning of the Länder codes.

code	English	Deutsch
BB	Brandenburg	Brandenburg
BE	Berlin	Berlin
BW	Baden-Wuerttemberg	Baden-Württemberg
BY	Bavaria	Bayern
HB	Bremen	Hansestadt Bremen
HE	Hesse	Hessen
HH	Hamburg	Hansestadt Hamburg
MV	Mecklenburg-Western Pomerania	Mecklenburg-Vorpommern
NI	Lower Saxony	Niedersachsen
NW	North Rhine Westphalia	Nordrhein-Westfalen
RP	Rhineland-Palatinate	Rheinland-Pfalz
SD	Saarland	Saarland
SH	Schleswig-Holstein	Schleswig-Holstein
SN	Saxony	Sachsen
ST	Saxony-Anhalt	Sachsen-Anhalt
TH	Thuringia	Thüringen

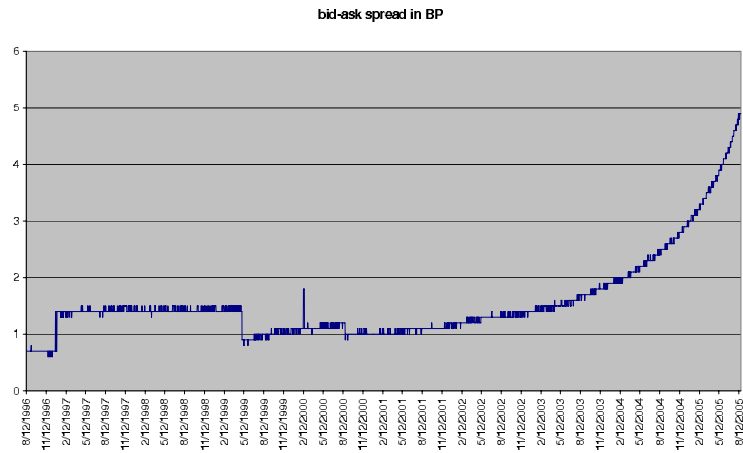


Figure 2: Bid-ask spread for jumbo bond ISIN DE0001240000 until one year before end of maturity.

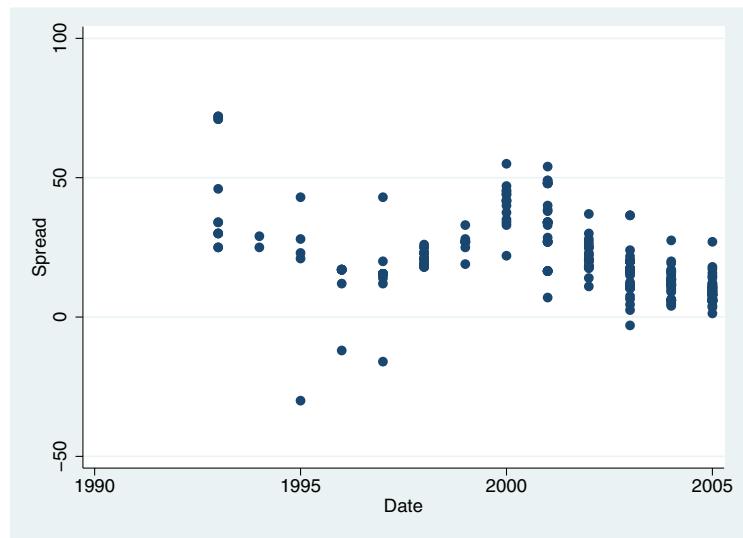


Figure 3: Interest rate spreads for subnational government primary debt issues versus benchmark Bund issues in basis points.

Table 4: Financial market statistics of German Länder

	yield spread	volume	maturity	number of issues
BB	6.3	500.0	10.0	1
BE	11.1	462.5	5.7	10
BW	7.4	633.3	7.1	3
BY	1.3	1000.0	8.0	1
HB	./.	./.	./.	./.
HE	13.5	437.5	8.7	4
HH	./.	./.	./.	./.
MV	./.	./.	./.	./.
NI	5.8	1500.0	10.0	1
NW	10.9	364.6	5.6	12
RP	5.9	500.0	2.0	1
SD	./.	./.	./.	./.
SH	./.	./.	./.	./.
SN	./.	./.	./.	./.
ST	14.7	1000.0	10.0	1
TH	4.0	500.0	9.7	1

Notes: Means of 2005: yield spread, volume, and maturity. Volume in million euros. Yield spread: Spread between yield to maturity at issue of a country bond and the benchmark bond of the Bund in basis points. Maturity in years. Sources: Capital bond data software, own calculations. ./.

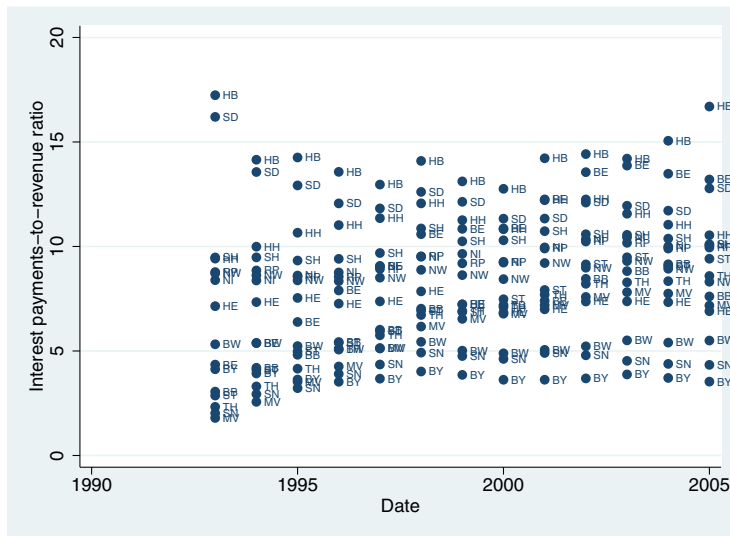


Figure 4: Evolution of the interest payments-to-revenue ratio in percent of GDP.

Table 5: Descriptive statistics of German Länder.

	Inhabitants	GDP per capita		Debt per capita		Debt to GDP
	2005	1991	2005	1991	2005	2005
BB	2562100	7660	18755	434	7674	40.92
BE	3391400	18428	23470	2354	16919	72.09
BW	10731200	23430	30818	2829	4360	14.15
BY	12457000	22724	32408	2126	3179	9.81
HB	662700	26838	36929	11459	18806	50.93
HE	6092900	24419	32454	4097	6803	20.96
HH	1738500	33844	45991	5916	12239	26.61
MV	1713200	7470	18263	353	7572	41.46
NI	8005900	18890	23534	4040	7545	32.06
NW	18059800	21184	27080	4327	8231	30.40
RP	4059600	19301	24007	3956	7949	33.11
SD	1052500	19230	26090	7281	9597	36.78
SH	2829000	19304	24381	4574	8474	34.76
SN	4283600	7597	20032	388	4107	20.50
ST	2483500	7139	19376	385	9389	48.46
TH	2345100	6625	19047	440	7958	41.78

Notes: Per capita volumes in euros. Debt per GDP and interest payments-to-expenditure ratio in per cent. Sources: Statistisches Bundesamt (Federal Statistical Office Germany), own calculations.

Table 6: Ratios of the variables used by the supreme court in its 1992 ruling to determine "fiscal distress".

	Interest payments-to-revenue ratio		Fiscal balance-to-expenditure ratio	
	1991*	2005	1991*	2005
BB	1.1	7.6	-18.8	-2.9
BE	2.9	13.2	-3.8	-8.1
BW	5.3	5.5	-3.9	-5.5
BY	4.3	3.5	-1.0	-0.7
HB	15.2	16.7	-13.1	-26.8
HE	7.1	6.9	-4.5	-4.7
HH	8.2	10.5	0.2	-2.9
MV	0.9	7.2	-10.2	-4.5
NI	8.0	10.1	-3.5	-10.2
NW	9.1	8.3	-4.4	-7.6
RP	8.7	9.9	-3.7	-10.9
SD	16.2	12.8	-10.4	-18.3
SH	8.7	10.1	-5.8	-14.3
SN	0.6	4.3	-13.9	1.9
ST	0.9	9.4	-18.1	-8.1
TH	1.1	8.6	-15.6	-6.7

Notes: In percent. * 1992 for BB, MV, SN, ST, TH. Sources: Federal Statistical Office Germany, own calculations.

Table 7: Determinants of risk premia of German Länder, robustness check I

	A	B	C	D	E	F
debt per capita	3.80	2.13	4.88	5.59	4.52	3.36
	2.35	2.05	3.42	3.36	2.14	1.55
deficit per capita	2.77	3.97	7.30	7.45	6.98	6.34
	0.85	1.05	1.89	1.92	1.78	1.63
bid-ask	3.28	1.20	1.07	1.10	0.94	0.40
	2.63	0.86	0.79	0.81	0.68	0.29
maturity	1.84	1.57	1.66	1.63	1.61	1.36
	7.10	5.55	6.01	5.84	5.74	4.45
riskav	0.15	0.14	0.11	0.11	0.11	0.13
	5.14	4.95	3.71	3.55	3.46	3.97
interest payments/revenue			-295.53	-441.02	-399.92	-558.46
			-2.72	-2.15	-1.89	-2.50
(interest payments/revenue) ²			-823.12	-792.56	-2236.74	
			-0.83	-0.80	-0.01	-1.85
inhabitants					-0.01	-0.05
					-0.82	-2.02
debt per capita ²						0.0005
						2.02
interest payments/GDP	-1045.91					
	-1.45					
cons	-14.12	-25.77	-39.47	-42.24	237.35	868.17
	-1.07	-2.45	-3.46	-3.56	0.74	1.95
N	169	129	129	129	129	129
R ²	0.54	0.59	0.61	0.61	0.62	0.63

Notes: Dependent variable: yield spread measured as spread between yield to maturity at issue of a country bond and a comparable benchmark bond of the Bund in basis points. Maturity in years. Regression A with full sample, using interest-to-GDP ratio. Robustness check B-F by excluding the five new member states.

Table 8: Determinants of risk premia of German Länder, robustness check II (without city states)

	A	B	C	D	E
debt per capita	2.44	6.81	8.31	2.40	8.53
	1.43	2.97	3.78	0.78	1.56
deficit per capita	3.11	3.77	0.59	1.06	1.97
	0.84	1.04	0.17	0.31	0.56
bid-ask	3.96	3.74	3.27	2.82	2.87
	2.77	2.68	2.47	2.17	2.22
maturity	1.77	1.95	1.71	1.54	1.42
	6.24	6.87	6.21	5.61	4.92
riskav	0.17	0.14	0.11	0.12	0.12
	5.40	3.96	3.42	3.64	3.63
interest payments/revenue		-323.19	-1438.13	-1464.69	-1480.67
		-2.78	-4.72	-4.93	-4.99
(interest payments/revenue) ²			-6121.27	-6817.84	-6618.53
			-3.93	-4.42	-4.28
inhabitants				-0.04	-0.05
				-2.68	-2.94
debt per capita ²					0.0007
					1.35
N	142	142	142	142	142
R ²	0.53	0.55	0.60	0.63	0.63

Notes: Dependent variable: yield spread measured as spread between yield to maturity at issue of a country bond and a comparable benchmark bond of the Bund in basis points. Maturity in years. Robustness check by excluding the three city states.

Table 9: Determinants of risk premia of German Länder, robustness check III (5-10 year maturity only)

	A	B	C	D	E
debt per capita	-0.11	4.33	5.27	-0.74	-0.71
	-0.08	2.62	3.28	-0.41	-0.39
deficit per capita	4.76	5.03	1.16	0.35	0.24
	1.45	1.69	0.37	0.13	0.09
bid-ask	4.40	3.60	2.93	1.99	1.88
	3.04	2.73	2.29	1.76	1.64
maturity	0.80	0.67	0.59	-0.04	-0.04
	1.44	1.32	1.22	-0.09	-0.09
riskav	0.16	0.13	0.11	0.10	0.10
	5.70	4.63	4.40	4.22	4.00
interest payments/revenue		-411.25	-1139.29	-1189.84	-1218.16
		-4.36	-4.35	-5.23	-5.23
(interest payments/revenue) ²			-3974.70	-4556.62	-4807.09
			-2.96	-3.90	-3.86
inhabitants				-0.06	-0.06
				-5.22	-4.36
debt per capita ²					0.0001
					0.61
N	102	102	102	102	102
R ²	0.67	0.73	0.76	0.82	0.82

Notes: Dependent variable: yield spread measured as spread between yield to maturity at issue of a country bond and a comparable benchmark bond of the Bund in basis points. Maturity in years. Robustness check by restricting analysis to bonds issued with maturity between 5 and 10 years.

Table 10: Determinants of risk premia of German Länder, robustness check IV (instrumental variable regressions)

	A	B	C	D
debt per capita	1.77	14.08	8.38	5.89
	1.14	3.1	2.05	1.51
deficit per capita	-0.91	-2.25	-1.64	-1.44
	-0.29	-0.62	-0.51	-0.46
bid-ask	3.15	2.41	2.12	1.79
	2.84	1.84	1.83	1.58
maturity	1.36	0.83	0.71	0.42
	4.70	2.24	2.12	1.22
riskav	0.15	0.08	0.08	0.12
	5.55	1.98	2.22	3.44
interest payments/revenue	-389.94	-2927.57	-2295.12	-2244.53
	-2.91	-3.42	-3.09	-3.13
(interest payments/revenue) ²		-13038.99	-9894.96	-10805.58
		-3.17	-2.80	-3.09
inhabitants			-0.04	-0.08
			-3.22	-4.72
debt per capita ²				0.0008
				3.29
N	158	158	158	158
R ²	0.56	0.42	0.55	0.58

Notes: Dependent variable: yield spread measured as spread between yield to maturity at issue of a country bond and a comparable benchmark bond of the Bund in basis points. Maturity in years. Instrumental variable (two-stage least square) regressions. Instruments of interest payments/revenue and squared ratio are their first lags respectively.

The following Discussion Papers have been published since 2006:

Series 1: Economic Studies

1	2006	The dynamic relationship between the Euro overnight rate, the ECB's policy rate and the term spread	Dieter Nautz Christian J. Offermanns
2	2006	Sticky prices in the euro area: a summary of new micro evidence	Álvarez, Dhyne, Hoeberichts Kwapil, Le Bihan, Lünnemann Martins, Sabbatini, Stahl Vermeulen, Vilmunen
3	2006	Going multinational: What are the effects on home market performance?	Robert Jäckle
4	2006	Exports versus FDI in German manufacturing: firm performance and participation in international markets	Jens Matthias Arnold Katrin Hussinger
5	2006	A disaggregated framework for the analysis of structural developments in public finances	Kremer, Braz, Brosens Langenus, Momigliano Spolander
6	2006	Bond pricing when the short term interest rate follows a threshold process	Wolfgang Lemke Theofanis Archontakis
7	2006	Has the impact of key determinants of German exports changed? Results from estimations of Germany's intra euro-area and extra euro-area exports	Kerstin Stahn
8	2006	The coordination channel of foreign exchange intervention: a nonlinear microstructural analysis	Stefan Reitz Mark P. Taylor
9	2006	Capital, labour and productivity: What role do they play in the potential GDP weakness of France, Germany and Italy?	Antonio Bassanetti Jörg Döpke, Roberto Torrini Roberta Zizza

10	2006	Real-time macroeconomic data and ex ante predictability of stock returns	J. Döpke, D. Hartmann C. Pierdzioch
11	2006	The role of real wage rigidity and labor market frictions for unemployment and inflation dynamics	Kai Christoffel Tobias Linzert
12	2006	Forecasting the price of crude oil via convenience yield predictions	Thomas A. Knetsch
13	2006	Foreign direct investment in the enlarged EU: do taxes matter and to what extent?	Guntram B. Wolff
14	2006	Inflation and relative price variability in the euro area: evidence from a panel threshold model	Dieter Nautz Juliane Scharff
15	2006	Internalization and internationalization under competing real options	Jan Hendrik Fisch
16	2006	Consumer price adjustment under the microscope: Germany in a period of low inflation	Johannes Hoffmann Jeong-Ryeol Kurz-Kim
17	2006	Identifying the role of labor markets for monetary policy in an estimated DSGE model	Kai Christoffel Keith Küster Tobias Linzert
18	2006	Do monetary indicators (still) predict euro area inflation?	Boris Hofmann
19	2006	Fool the markets? Creative accounting, fiscal transparency and sovereign risk premia	Kerstin Bernoth Guntram B. Wolff
20	2006	How would formula apportionment in the EU affect the distribution and the size of the corporate tax base? An analysis based on German multinationals	Clemens Fuest Thomas Hemmelgarn Fred Ramb

21	2006	Monetary and fiscal policy interactions in a New Keynesian model with capital accumulation and non-Ricardian consumers	Campbell Leith Leopold von Thadden
22	2006	Real-time forecasting and political stock market anomalies: evidence for the U.S.	Martin Bohl, Jörg Döpke Christian Pierdzioch
23	2006	A reappraisal of the evidence on PPP: a systematic investigation into MA roots in panel unit root tests and their implications	Christoph Fischer Daniel Porath
24	2006	Margins of multinational labor substitution	Sascha O. Becker Marc-Andreas Müндler
25	2006	Forecasting with panel data	Badi H. Baltagi
26	2006	Do actions speak louder than words? Household expectations of inflation based on micro consumption data	Atsushi Inoue Lutz Kilian Fatma Burcu Kiraz
27	2006	Learning, structural instability and present value calculations	H. Pesaran, D. Pettenuzzo A. Timmermann
28	2006	Empirical Bayesian density forecasting in Iowa and shrinkage for the Monte Carlo era	Kurt F. Lewis Charles H. Whiteman
29	2006	The within-distribution business cycle dynamics of German firms	Jörg Döpke Sebastian Weber
30	2006	Dependence on external finance: an inherent industry characteristic?	George M. von Furstenberg Ulf von Kalckreuth
31	2006	Comovements and heterogeneity in the euro area analyzed in a non-stationary dynamic factor model	Sandra Eickmeier

32	2006	Forecasting using a large number of predictors: is Bayesian regression a valid alternative to principal components?	Christine De Mol Domenico Giannone Lucrezia Reichlin
33	2006	Real-time forecasting of GDP based on a large factor model with monthly and quarterly data	Christian Schumacher Jörg Breitung
34	2006	Macroeconomic fluctuations and bank lending: evidence for Germany and the euro area	S. Eickmeier B. Hofmann, A. Worms
35	2006	Fiscal institutions, fiscal policy and sovereign risk premia	Mark Hallerberg Guntram B. Wolff
36	2006	Political risk and export promotion: evidence from Germany	C. Moser T. Nestmann, M. Wedow
37	2006	Has the export pricing behaviour of German enterprises changed? Empirical evidence from German sectoral export prices	Kerstin Stahn
38	2006	How to treat benchmark revisions? The case of German production and orders statistics	Thomas A. Knetsch Hans-Eggert Reimers
39	2006	How strong is the impact of exports and other demand components on German import demand? Evidence from euro-area and non-euro-area imports	Claudia Stirböck
40	2006	Does trade openness increase firm-level volatility?	C. M. Buch, J. Döpke H. Strotmann
41	2006	The macroeconomic effects of exogenous fiscal policy shocks in Germany: a disaggregated SVAR analysis	Kirsten H. Heppke-Falk Jörn Tenhofen Guntram B. Wolff

42	2006	How good are dynamic factor models at forecasting output and inflation? A meta-analytic approach	Sandra Eickmeier Christina Ziegler
43	2006	Regionalwährungen in Deutschland – Lokale Konkurrenz für den Euro?	Gerhard Rösl
44	2006	Precautionary saving and income uncertainty in Germany – new evidence from microdata	Nikolaus Bartzsch
45	2006	The role of technology in M&As: a firm-level comparison of cross-border and domestic deals	Rainer Frey Katrin Hussinger
46	2006	Price adjustment in German manufacturing: evidence from two merged surveys	Harald Stahl
47	2006	A new mixed multiplicative-additive model for seasonal adjustment	Stephanus Arz
48	2006	Industries and the bank lending effects of bank credit demand and monetary policy in Germany	Ivo J.M. Arnold Clemens J.M. Kool Katharina Raabe
01	2007	The effect of FDI on job separation	Sascha O. Becker Marc-Andreas Müндler
02	2007	Threshold dynamics of short-term interest rates: empirical evidence and implications for the term structure	Theofanis Archontakis Wolfgang Lemke
03	2007	Price setting in the euro area: some stylised facts from individual producer price data	Dias, Dossche, Gautier Hernando, Sabbatini Stahl, Vermeulen
04	2007	Unemployment and employment protection in a unionized economy with search frictions	Nikolai Stähler

05	2007	End-user order flow and exchange rate dynamics	S. Reitz, M. A. Schmidt M. P. Taylor
06	2007	Money-based interest rate rules: lessons from German data	C. Gerberding F. Seitz, A. Worms
07	2007	Moral hazard and bail-out in fiscal federations: evidence for the German Länder	Kirsten H. Heppke-Falk Guntram B. Wolff

Series 2: Banking and Financial Studies

01	2006	Forecasting stock market volatility with macroeconomic variables in real time	J. Döpke, D. Hartmann C. Pierdzioch
02	2006	Finance and growth in a bank-based economy: is it quantity or quality that matters?	Michael Koetter Michael Wedow
03	2006	Measuring business sector concentration by an infection model	Klaus Düllmann
04	2006	Heterogeneity in lending and sectoral growth: evidence from German bank-level data	Claudia M. Buch Andrea Schertler Natalja von Westernhagen
05	2006	Does diversification improve the performance of German banks? Evidence from individual bank loan portfolios	Evelyn Hayden Daniel Porath Natalja von Westernhagen
06	2006	Banks' regulatory buffers, liquidity networks and monetary policy transmission	Christian Merkl Stéphanie Stolz
07	2006	Empirical risk analysis of pension insurance – the case of Germany	W. Gerke, F. Mager T. Reinschmidt C. Schmieder
08	2006	The stability of efficiency rankings when risk-preferences and objectives are different	Michael Koetter
09	2006	Sector concentration in loan portfolios and economic capital	Klaus Düllmann Nancy Masschelein
10	2006	The cost efficiency of German banks: a comparison of SFA and DEA	E. Fiorentino A. Karmann, M. Koetter
11	2006	Limits to international banking consolidation	F. Fecht, H. P. Grüner

12	2006	Money market derivatives and the allocation of liquidity risk in the banking sector	Falko Fecht Hendrik Hakenes
01	2007	Granularity adjustment for Basel II	Michael B. Gordy Eva Lütkebohmert
02	2007	Efficient, profitable and safe banking: an oxymoron? Evidence from a panel VAR approach	Michael Koetter Daniel Porath
03	2007	Slippery slopes of stress: ordered failure events in German banking	Thomas Kick Michael Koetter
04	2007	Open-end real estate funds in Germany – genesis and crisis	C. E. Bannier F. Fecht, M. Tyrell
05	2007	Diversification and the banks' risk-return-characteristics – evidence from loan portfolios of German banks	A. Behr, A. Kamp C. Memmel, A. Pfingsten
06	2007	How do banks adjust their capital ratios? Evidence from Germany	Christoph Memmel Peter Raupach

Visiting researcher at the Deutsche Bundesbank

The Deutsche Bundesbank in Frankfurt is looking for a visiting researcher. Among others under certain conditions visiting researchers have access to a wide range of data in the Bundesbank. They include micro data on firms and banks not available in the public. Visitors should prepare a research project during their stay at the Bundesbank. Candidates must hold a Ph D and be engaged in the field of either macroeconomics and monetary economics, financial markets or international economics. Proposed research projects should be from these fields. The visiting term will be from 3 to 6 months. Salary is commensurate with experience.

Applicants are requested to send a CV, copies of recent papers, letters of reference and a proposal for a research project to:

Deutsche Bundesbank
Personalabteilung
Wilhelm-Epstein-Str. 14

60431 Frankfurt
GERMANY

