

ECMS | Reference data

Deutsche Bundesbank

Frankfurt am Main, March 2023

Updated 17 March 2023

Title	ECMS Reference data (Counterparties)
Objectives	Topic-based training on specific aspects of the ECMS application: <ul style="list-style-type: none">▪ Participants are familiar with and understand the role and rights concept of the ECMS.▪ Participants know which roles, rights and reference data are to be assigned to commercial banks.
Content	ECMS Reference data <ul style="list-style-type: none">▪ ECMS Roles and rights – 30 minutes▪ ECMS Reference data – 70 minutes▪ Q&A – 20 minutes
Target group	For counterparties that work directly with roles, rights and reference data in the ECMS (for example, in the user roles “counterparty party administrator” or “counterparty (U2A) general reference data”).
Prior knowledge	All participants should have completed the ECMS basic training module as well as the “Access & GUI” training module.
General framework	<ul style="list-style-type: none">▪ Virtual training course (online)/hosted via WebEx▪ 120 minutes/maximum 500 participants/in German

Training materials

- We will provide you with the following training materials for this event:
Presentation slides # ECMS video(s).
- For data protection reasons, the training course will NOT be recorded.

Q&A

- Please feel free to ask questions or add to the discussion as we go along. A separate Q&A session will also be held at the end of each training session.
- If you have any questions or wish to say something, please use the chat function.

Training feedback

- When you were invited to this event, you were sent a link to a standardised and anonymised feedback form.
- Once the event has ended, please take a few moments to fill out the form and give us honest feedback on this training course. Thank you!

1. ECMS | Roles and rights

(basic concept (parties, party creation, user roles), connectivity checklist, ECMS registration, user roles)

2. ECMS | Reference data

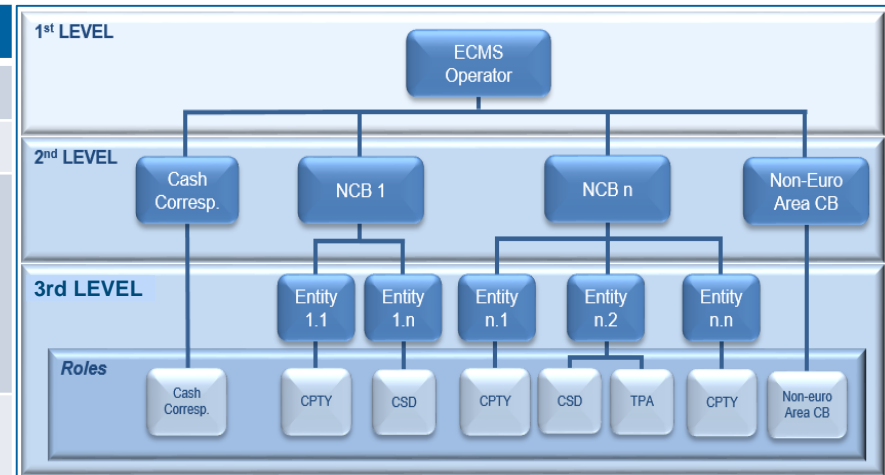
(parties, business roles, users, accounts, pools, marketable assets, settlement possibilities and T2S relocation, interfaces, generic data, blocking counterparties)

1. Roles and rights

Basic concept (parties)

- Each legal entity interacting with the ECMS is defined as an **ECMS party**. Each party belongs to one of the following four party types:
 - ECMS operator, NCB, ECMS entity, non-euro area CB** (see the table on the left).
- The relationships between the parties are determined by a hierarchical party model based on a three-level structure for creating the parties. Once these parties have been created, one or multiple specific business roles are assigned to each party (see the chart on the right).

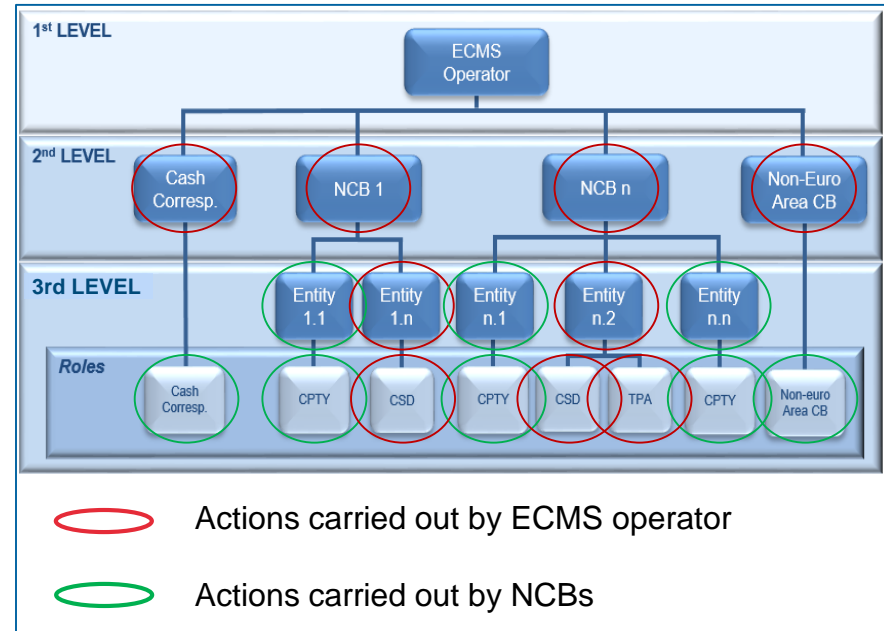
ECMS party	Legal entity
ECMS operator	<ul style="list-style-type: none">The party operating the ECMS (4CB).
NCB	<ul style="list-style-type: none">National central banks of the Eurosystem.
ECMS entity	<ul style="list-style-type: none">ECMS entities may have one or more of the following business roles:<ul style="list-style-type: none">counterparty;central securities depository (CSD);triparty agent (TPA);cash correspondent.
Non-euro area CB	<ul style="list-style-type: none">Non-Eurosystem central bank participating in the CCBM-Out-Agreement.



1. Roles and rights

- The **ECMS operator** is responsible for:
 - **creating** each party at level 2;
 - **creating** and **assigning business roles** to **CSDs** and **TPAs** on behalf of NCBs.
- The **NCBs** are responsible for:
 - **creating** their **counterparties**;
 - **assigning business roles** to the ECMS entities **counterparty**, **cash correspondent** and **non-euro area CB**.
- The **counterparties** are responsible for:
 - creating and administering their own users/roles/groups, for example.

Basic concept (party creation)



- An **ECMS role** is a set of privileges (rights) granting the holder of that role the ability to trigger an ECMS user function. These user roles are predefined in the ECMS.
- Each system user* is assigned at least one of these **predefined user roles**. The resulting rights concern **business functions** that the user can perform in either “**read-only**” or “**execution**” mode.
- For each **NCB**, the ECMS operator assigns the role of **administrator** to a system user it has created. This administrator can create **additional system users** and give these their own rights via the predefined **U2A and A2A roles for NCBs**.
- The NCB administrator also creates at least one system user in the ECMS in the role of **administrator** for each (monetary policy) counterparty. This administrator can create **additional system users** for their organisation and give these their own rights via the predefined **U2A and A2A roles for counterparties**.

* As a general rule, system users can be:

- For U2A communication ==> an employee, e.g. of a counterparty or an NCB
- For A2A communication ==> an application, e.g. of a counterparty or an NCB

1. Roles and rights

Basic concept (2-eyes/4-eyes mode)

- You can use ECMS in 2-eyes mode or 4-eyes mode depending on how the access rights are set up. The 2-eyes mode and the 4-eyes mode **apply to input screens** and to any kind of **deletion processes**. If you are a **4-eyes mode** user, your **actions have to be confirmed by a second user** in order to be processed.
- Each U2A user must be assigned either the “**2-eyes**” or the “**4-eyes**” role. From then onwards, the assigned privilege **applies for all other roles with execution rights**.

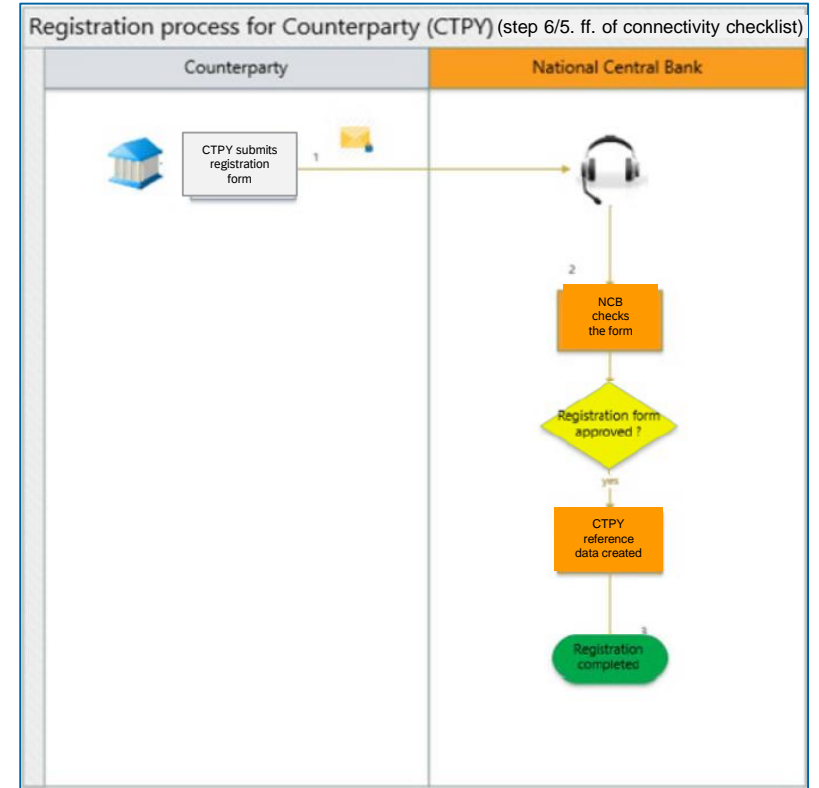
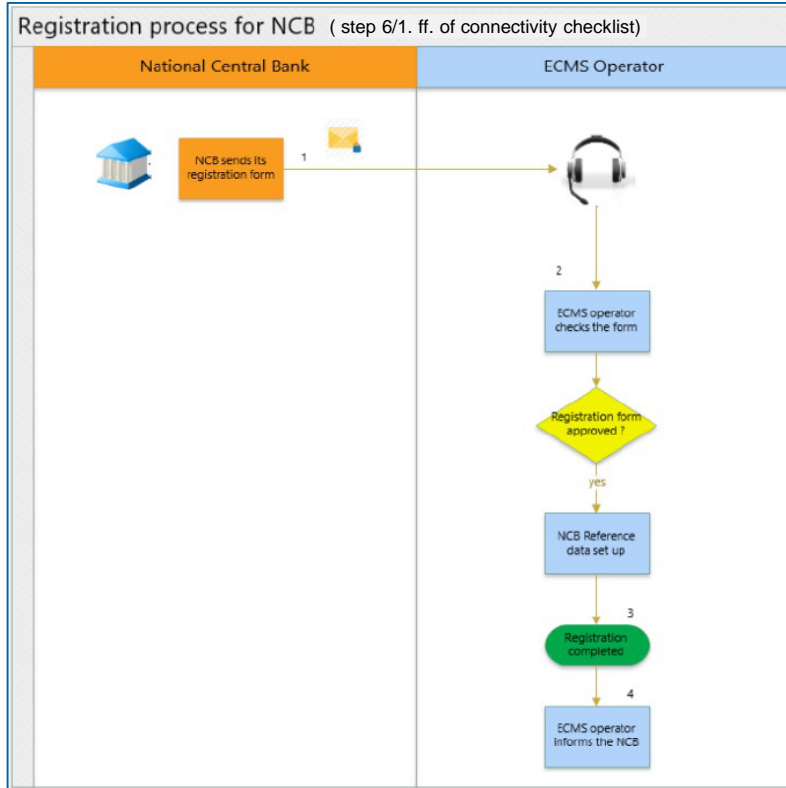
1. Roles and rights Connectivity checklist (TARGET Services and ECMS)

Step	Action	TARGET Service
1	Select the NSP of choice and select the related Services.	ALL
2	Ask the NSP's for an offer and order the related products.	ALL
3	Connectivity setup with the NSP.	ALL
4	Subscribe to the NSP's Services for TARGET Services (e.g. inclusion into the CGU).	ALL
5	Request for the NSP PKI certificates.	ALL
6	Create the Party in Reference Data in ECMS	ECMS
7	Create Party administrators in ECMS	ECMS
8	Create the users and the Distinguish Name in ECMS	ECMS
9	Connectivity test with TARGET Services A2A <ul style="list-style-type: none"> • in case of schema validation error, the user will receive an adm1.007 message • business validation errors will trigger the relevant business response message (eg. Pacs.002, camt.025 and reda.xxx according to the service/component the message has been sent to) U2A <ul style="list-style-type: none"> • the user will be able to reach the ESMIG landing page 	ALL

Activity (Additional Details to Steps 6 to 8 in left Table)	Actor
1. Creation of NCB/CSD/TPA party	ECMS Operator
2a. Creation of NCB user(s) with the role 'NCB Admin'	ECMS Operator
2b. Creation of CSD/TPA A2A user without any role attached (assigning a role is not needed for starting connectivity testing)	
As from 2b. CSD/TPA A2A connectivity testing can be done	CSD/TPA A2A User
3. Connection to the ECMS GUI landing page (and the user can access menu corresponding to his role)	NCB Admin
4a. Creation of NCB A2A user without any role attached (not needed for connectivity testing)	NCB Admin
4b. Creation of NCB User(s) with the role 'NCB – U2A General Reference Data Execution' (as from that moment the NCB user can access the menu corresponding to his role)	
As from 4a. NCB A2A connectivity testing can be done	NCB A2A User
5. Creation of the CPTY party	NCB User in U2A (cf. Step 4b)
6. Creation of the CPTY user(s) with the role 'CPTY Admin'	NCB Admin
7. Connection to the ECMS GUI landing page (and the user can access menu corresponding to his role)	CPTY Admin
8. Creation of CPTY A2A user without any role attached (not needed for connectivity testing)	CPTY Admin
As from 8. CPTY A2A connectivity testing can be done	CPTY A2A User

1. Roles and rights


ECMS registration (NCBs and counterparties)



1. Roles and rights

ECMS registration (NCBs and counterparties)

The data required to create ECMS actors are collected using predefined **registration forms**, which are made available to ECMS agents **three months before the start of the connectivity tests**.

- To **create the reference data of NCBs, central securities depositories and triparty agents**, the NCBs send the ECMS operator their completed registration forms one month in advance for the EAC test environment and two months before the start of the connectivity tests for the pre-production test environment.
- The NCBs fill out their registration forms and send them to the ECMS operator by email. 
- The NCBs also contact their central securities depository and triparty agents for the purpose of filling out the registration form, which they then send to the ECMS operator as well.
- To create the **counterparties' reference data**, the NCBs contact their counterparties for the purpose of filling out the registration form, then enter these data in the test environment.

Responsible ECMS party	Creates reference data for:	Mode
ECMS operator	NCB	U2A/A2A
ECMS operator	CSD/TPA	A2A
NCB	NCB counterparties	U2A/A2A

1. Roles and rights

Counterparty registration form

Registration form for ECMS customer tests

DE

The registration form serves to record your institution-specific static data for ECMS in the ECMS Usertesting Environment Pre Prod.

Please send the completed file by e-mail by January 31, 2023 to > ecms-test@bundesbank.de.

There are four different registration forms available.

Banken mit eigenem Zugang und Einrichtung von zwei Benutzeradministratoren
25 KB, XLSX

Banken mit eigenem Zugang und Einrichtung von einem Benutzeradministrator
23 KB, XLSX

Serviceanbieter und Einrichtung von zwei Benutzeradministratoren pro Institut
38 KB, XLSX

Serviceanbieter und Einrichtung von einem Benutzeradministrator pro Institut
49 KB, XLSX

Information on how to fill out the form can be found in the following completion guide (in German only)

A correctly completed form is the basis for the creation of your master data in ECMS in the Pre Prod test environment and thus for a successful start of the ECMS user test phase. In order to support you in the handling of the form applicable to your institute, we created a document with detailed completion instructions that will guide you through each of the parts of the form to be processed, as well as containing assignment guidelines/naming conventions.

Ausfüllhilfe für das Registrierungsformular ECMS Kundentests (Testumgebung ECMS Pre Prod)
Version 1.0
27.12.2022 | 262 KB, PDF

target**ecms** ECMS Registration Form for Counterparties - Formular für Serviceanbieter (Vier-Augen-Prüfung)
Der Name der Datei ist wie folgt anzugeben: "Name des Instituts", "FIAD Code", "ECMS_KEP"
In diese Datei können maximal 50 Banken eingetragen werden
Change mehrere Felder können nicht bearbeitet werden.

Field	Country	Counterparty	Contact Person	Email	Date	Environment
Description	Select the ISO-3 Code of your country or location.					Select the environment: PreProd.
Value #1	DE					
Data for Connecting Party Identification						
Field	Party FIAD Code*	Country Code*	Party Type*	Party Name*	BIC code	
Description	Enter the FIAD Code that uniquely identifies your Counterparty. Required format is: Max. 30 characters.	Select the ISO-3 Code of your country or location.	Defines what is the type of ECMS Party.	Enter the name of your Counterparty. Required format is: Max. 35 characters.	Enter the BIC Code of your Counterparty (for the ECMS). Required format is: Max. 11 characters.	
Value #1		DE	ECMS Entry			
Alternative Codes						
Field	Additional Codes*	Provider*	Party FIAD Code*			
Description	Enter the LEI (Legal Entity Identifier) code for your Counterparty. Required format is: Max. 30 characters.	Provider of the Additional Code	FIAD Code that uniquely identifies your Counterparty. Required format is: Max. 30 characters.			
Value #1		LB		0		
Field	Party FIAD Code*	Technical Address*	Network*	Technical Address*		
Description	Enter the FIAD Code that uniquely identifies your Counterparty. Required format is: Max. 30 characters.	Unique technical address to identify your Counterparty. ECMS uses this address to send outgoing messages to your Counterparty. Enter the technical address for the purpose and network selected. Required format is: Max. 256 characters.	Select the network service provider.	Select the purpose of the Technical Address from the possible values.		
Value #1						
Field	ECMS System User Reference Name*	User DN*	Counterparty Administrator User*	Party FIAD Code*	is Active*	
Description	Enter the ECMS System User Reference of the user. Required format is: Max. 35 characters.	Enter the name of the user. Required format is: Free Text.	Enter the DN of the user.	Counterparty UOA, Party Administrator (Execution and Read Only) Counterparty UOA, Party Administrator (Execution and Read Only)	Select if user is active by selecting True or inactive by choosing false.	
Value #1				0	VAHR	
Value #2				0	VAHR	
Other data						
Field	Party FIAD Code*	BIC Address*	Purpose			
Description	FIAD Code that uniquely identifies your Counterparty. Required format is: Max. 30 characters.	Enter the BIC Code of the Party in the ECMS. Required format is: Max. 11 characters.	Select the purpose for the BIC code from the list of possible values.			
Value #1			Official			
Contact Information Counterparty						
Field	Party FIAD Code*	Counterparty FIAD Code	Contact Name*	Function/Business an Email	Email2	Fax
Description	FIAD Code that uniquely identifies your Counterparty. Required format is: Max. 30 characters.	FIAD Code that uniquely identifies your Counterparty. Required format is: Max. 30 characters.	Enter the name of the contact for your Counterparty. Required format is: Max. 255 characters.	Enter the function and/or the business area of the contact for your Counterparty. Required format is: Max. 255 characters.	Enter the email address of the contact for your Counterparty. Required format is: Max. 255 characters.	Enter the Fax number of the contact for your Counterparty. Required format is: Max. 9 characters.
Value #1						
Banking group						
Field	Banking group	Banking group manager				
Description	Choose "YES" or "NO" if you belong to a banking group.	Enter the name of the party which is the manager to the banking group.				
Value #1						

1. Roles and rights

User roles (counterparties)

Role (user)	Description (simplified)	Variant
Counterparty (U2A) Party Administrator	Creates and manages their own users/roles/groups	Read only / Execution
Counterparty (U2A) General Reference Data	Overview of reference data constellation for counterparty's data scope (e.g. party, accounts, settlement possibilities, etc.)	Read only
Counterparty (U2A) Marketable (De)Mobilisation Asset	Monitors and manages the counterparty's (de)mobilisation instructions for marketable assets	Read only / Execution
Counterparty (U2A) Open Market Operations	Monitors the counterparty's open market operations	Read only
Counterparty (U2A) Standing Facilities	Manages or monitors the counterparty's marginal lending ("on request" and "automatic")	Read only / Execution
Counterparty (U2A) Credit Line	Sets up and manages the counterparty's own maximum credit line	Read only / Execution
Counterparty (U2A) Pool Position Management	Monitors the counterparty pool: user can see the pool overview, the pool valuation and pool position	Read only

... .. Overall, more than 20 different ECMS user roles are defined for counterparties.

If you have any questions or wish to say something,
please use the chat function.



1. ECMS | Roles and rights

(basic concept (parties, party creation, user roles), connectivity checklist, ECMS registration, user roles)

2. ECMS | Reference data

(parties, business roles, users, accounts, pools, marketable assets, settlement possibilities and T2S relocation, interfaces, generic data, blocking counterparties)



Where?

- Reference Data module



How?

- Reference data can be created, displayed and edited
- Some reference data can only be created/processed by the NCBs, e.g. ECMS parties



What?

- Creation, maintenance and displaying of reference data:
 - ECMS parties, business roles and users
 - Accounts and pools
 - Marketable assets
 - Settlement possibilities and T2S relocation
 - Credit claims
 - Counterparty-specific reference data
 - Generic reference data
 - ECMS calendar
 - Rates
 - Interfaces
 - NCB business parameters



Special functions

- Certain data (e.g. account numbers of MCAs and T2S DCAs) are compared against the Common Reference Data Management (CRDM)

2. Reference data

Main menu Reference Data module (look & feel)

- Main menu
Reference Data module (“MegaCommon”)



2. Reference data

Menu bar Reference Data module

Module	Main menu	Description
Reference Data	Reference Data	<ul style="list-style-type: none">Reference data on counterparties, creation of internal and external accounts (cash, securities, credit claims), establishment of settlement possibilities and eligible links, user and access rights administration, parameters for US withholding tax
	Interfaces	<ul style="list-style-type: none">Overview of interfaces with Eurosystem services (including marketable assets, price information, exchange rates), data transfer to T2S and triparty agents
	Statements & Messages	<ul style="list-style-type: none">Access to statement of holdings and statement of transactions
	Billing	<ul style="list-style-type: none">Administration of incoming invoices from the central securities depository/triparty agent and outgoing invoices to counterparties
	Setup	<ul style="list-style-type: none">Message subscription setup, file channel configuration
	Reports	<ul style="list-style-type: none">Reports from the Reference Data module
	ECMS Core	<ul style="list-style-type: none">Access to other modules

- Parties are created and business roles assigned in **U2A mode** in the **Reference Data module** (see slide 6 “Party creation”). Possible **combinations** of business roles:
 - The same legal entity may simultaneously have the role of a **central securities depository** and a **triparty agent**.
 - A **counterparty** may also be a **banking group manager**.
- If a legal entity has a **contractual relationship with two NCBs**, this legal entity is defined twice under **two separate ECMS parties**, i.e. one for each NCB.
- **Counterparties are created by their NCBs in two steps:**
 - **1. Creation of the ECMS party**, which involves entering specific details such as the party’s RIAD code, name, address details and additional codes.
 - **2.** Once the contracting party has been created, the **business roles** can be assigned. In this step, further details, such as eligibility attributes and additional haircuts are listed.

2. Reference data

Party details (look & feel)

- “List: Parties > View: Party” screen for a detailed view of a party
- Reference Data >> Reference Data >> Parties Reference Data >> Parties Create/Display >> click “Search” (after entering the relevant reference data, if necessary) >> Select party >> click “View”

List: Parties > View: Party History

GENERAL INFORMATION

Party RUD Code ES6000	Party Name PartyName	Party Short Name SHORTNAME19082922
Country Code NL/NETHERLANDS	Party Type KCCAS ENTITY	
Address details [0]	Additional Codes [0]	Contact information [0]
BIC JDRDDE33XXX	Party Internal Id 305	

Activation Details

Is Active Yes	Validity start date 19/08/2022	Validity end date
(De)activation Reason		

Validation details

Action To Validate	Rejected No
--------------------	----------------

Foot Print

Creation Date 18/06/2022 07:44:43.642	Creation User Id STEP
Update Date 18/06/2022 07:44:43.642	Updater User Id STEP

- The ECMS allows NCB users and counterparties to **manage** the **system users** as well as to **assign predefined roles and/or groups** to these users.
- Each system user defined in the ECMS must be:
 - **a human user**, i.e. an employee of a given ECMS counterparty using the ECMS U2A via GUI;or
 - **an application**, i.e. a software component of a given ECMS counterparty interacting with the ECMS in A2A mode.
- **Authorisation**, i.e. the **user's right** to perform a specific function in the ECMS, is based on the user's privileges (embedded in their predefined roles), which are stored in the ECMS reference data (user, group, role).

2. Reference data

User creation (look & feel)

- “Edit: User” screen for creating a user
- Reference Data >> Reference Data >> Access Rights Reference Data >> Users >> Users Create/Display >> click “Create”
- User roles can be selected via “Security Role” (see Section 1).

The screenshot shows the 'Edit: User' interface. At the top, there are two small icons (a left-pointing arrow and a right-pointing arrow). Below them, the title 'Edit: User' is displayed. The main form area contains several sections:

- ECMS System User Reference:** A text input field.
- Name:** A text input field.
- Is Active:** A checkbox with a checkmark, indicating it is selected.
- User Properties:** A section with a purple button labeled 'User Properties [0]'.
- Groups:** A section with a purple button labeled 'Groups [0]'.
- Security Role:** A section with a purple button labeled 'Security Role [0]', which is circled in red.
- User Multi Tenancy:** A section with a purple button labeled 'User Multi Tenancy [1]'.

At the bottom left, there is a green 'Reset' button. At the bottom right, there are green 'Save' and blue 'Cancel' buttons.

2. Reference data

Groups (look & feel)

- Multiple user roles can be consolidated into groups (user profile) and these grouped roles subsequently assigned to users.
- “Edit: Group” screen for creating groups
- Reference Data >> Reference Data >> Access Rights Reference Data >> Group >> click “Create”

Edit : Group

Group Id

Group Name

Assigned Roles

Assigned Roles [0]

Group Properties

Group Properties [0]

Assigned Users

Assigned Users [0]

Reset

Save Cancel

- **Internal asset accounts** are used by counterparties and NCBs to bookkeep collateral positions. These accounts are **opened and managed directly in the ECMS**.
- **External asset accounts** are opened or registered in the books of central securities depositories and configured in T2S for the settlement of marketable asset instructions.
 - These securities accounts are not opened in the books of an NCB in the ECMS, but need to be **configured within the ECMS reference data in such a way** that they **mirror the market positions**, meaning that the ECMS can perform business checks for them.
- **External cash accounts** are **operated by external systems** such as CLM for the settlement of cash operations and the provision of intraday liquidity. These cash accounts are **not opened directly in the ECMS** either, but must be **set up as reference data**, as the ECMS uses them to send payment instructions.

2. Reference data

Account creation (ECMS account types)

Internal asset account

ECMS counterparty asset account

ECMS cross NCB asset account

ECMS non-euro area CB asset account

ECMS NCB asset account

External asset account

ECMS cross NCB asset account (mirror)

T2S securities account for regular collateral

T2S securities account for triparty collateral

T2S securities account for intraday auto-collateral

External cash account

CLM main cash account

T2S dedicated cash account

Non-euro cash account

CLM CB account

Contingency cash account

CB contingency cash account

- Account creation takes place in **U2A mode in the Reference Data module**.
 - The **NCBs** are solely responsible for the **set up and maintenance of account reference data** in their field of competence.
 - The ECMS relies on the **directories of T2S securities accounts, T2S DCAs** (dedicated cash accounts) (Common Reference Data Management) and of MCAs operated in CLM (Central Liquidity Management main cash accounts) received from CDRM to validate relevant attributes of external accounts set up in the ECMS.
 - The internal asset accounts and external asset accounts must be **linked to cash accounts in the ECMS** in order to identify the cash accounts used for the settlement of payments resulting from corporate actions on securities mobilised as collateral.
 - Each **NCB** is responsible for the **setup and maintenance of the links between the accounts**; this is carried out in U2A mode.
 - There cannot be more than **one link between any securities/asset account and a given currency** at any one time.

- The **owner** of an ECMS counterparty asset account is a **counterparty**, and the **account servicer** is its **NCB**, acting as the refinancing central bank.
- The ECMS counterparty asset accounts are used to hold the collateral positions of the counterparty to which they are linked.
- Either **marketable assets** or **credit claims** may be held on a counterparty asset account, but **not both on the same account**.
- The ECMS counterparty asset account makes it possible to identify the legal technique used to mobilise the collateral (pledge for collateralised loan or repo for transfer of ownership).
- Only **one legal collateralisation technique** may be used in each **counterparty asset account**.
- Each counterparty may have as many ECMS counterparty asset accounts as it requires to segregate its collateral.

2. Reference data

Create Account (look & feel)

- Search and list screens for internal asset accounts*
- Reference Data >> Reference Data >> Accounts Reference Data >> Create/Display Internal Asset Account >> click “Search”

Create / Display Internal Asset Account

Search: Internal Asset Accounts

Account Reference -- Account Owner -- Account Name -- Account Type --

Account Servicer -- Collateralisation technique -- Asset Category -- Is Active --

Validity Start Date -- Validity End Date -- Creation Date -- Update Date --

Reset Create Search

Search Result : Internal Asset Accounts

ID	Account Reference	Account Owner	Account Servicer	Account Type	Account Name	Asset Category	Collateralisation tec.	Is Active	Validity Start Date	Validity End Date	Updater User Id	Update Date	Creation Date
09032022001	ABVRR004IABVRR004	AT000000388B151	ECMS Counterparty A...	ECMS Counterparty A...	09032022001	MARKETABLE ASSET...	PLEDGE	No	09/03/2022	10/03/2022	ECMSOperationalDay...	09/03/2022 10:18:18...	09/03/2022 10:18:18...
56423	ABVRR002IABVRR004	AT000000388B151	ECMS Counterparty A...	ECMS Counterparty A...	56423	MARKETABLE ASSET...	PLEDGE	Yes	11/02/2022		ATCP003	11/02/2022 09:58:28...	11/02/2022 09:58:28...
ABVRR01IAA01	ABVRR01IABVRR01	AT000000388B151	ECMS Counterparty A...	ECMS Counterparty A...	ABVRR01IAA01	MARKETABLE ASSET...	PLEDGE	Yes	31/08/2021		STP	01/09/2021 09:16:29...	01/09/2021 09:16:29...
ABVRR01IAA01 (Dns)	ABVRR01IABVRR01	AT000000388B151	ECMS Counterparty A...	ECMS Counterparty A...	ABVRR01IAA01 (Dns)	MARKETABLE ASSET...	PLEDGE	Yes	13/12/2021		STP	13/12/2021 11:06:34...	13/12/2021 11:06:34...
ABVRR01IAA02	ABVRR01IABVRR01	AT000000388B151	ECMS Counterparty A...	ECMS Counterparty A...	ABVRR01IAA02	MARKETABLE ASSET...	PLEDGE	Yes	05/10/2021		STP	05/10/2021 14:46:11...	05/10/2021 14:46:11...
ABVRR01IAA03	ABVRR01IABVRR01	AT000000388B151	ECMS Counterparty A...	ECMS Counterparty A...	ABVRR01IAA03	MARKETABLE ASSET...	PLEDGE	Yes	20/01/2022		STP	20/01/2022 16:20:47...	20/01/2022 16:20:47...
ABVRR02IAA01	ABVRR02IABVRR02	AT000000388B151	ECMS Counterparty A...	ECMS Counterparty A...	ABVRR02IAA01	MARKETABLE ASSET...	PLEDGE	Yes	31/08/2021		STP	01/09/2021 09:19:30...	01/09/2021 09:19:30...
ABVRR02IAA02	ABVRR02IABVRR02	AT000000388B151	ECMS Counterparty A...	ECMS Counterparty A...	ABVRR02IAA02	MARKETABLE ASSET...	PLEDGE	Yes	20/09/2021		STP	20/09/2021 16:06:50...	20/09/2021 12:10:59...
ABVRR02IAA03	ABVRR02IABVRR02	AT000000388B151	ECMS Counterparty A...	ECMS Counterparty A...	ABVRR02IAA03	MARKETABLE ASSET...	PLEDGE	Yes	24/09/2021		STP	24/09/2021 16:13:06...	24/09/2021 16:13:06...
ABVRR02IAA04	ABVRR02IABVRR02	AT000000388B151	ECMS Counterparty A...	ECMS Counterparty A...	ABVRR02IAA04	MARKETABLE ASSET...	PLEDGE	Yes	14/01/2022		STP	14/01/2022 12:41:32...	14/01/2022 12:41:32...

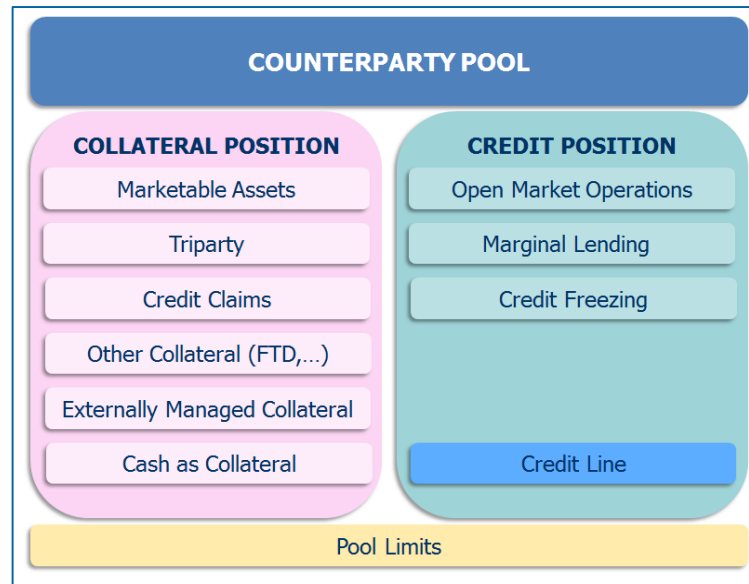
History Edit View

- * External asset accounts and NCB participant cash accounts can be displayed in the same way:
- >> External Asset Account >> Create/Display External Asset Accounts
 - >> NCB Participant Cash Account Create/Display

2. Reference data

Create Pools

- The ECMS uses collateral pooling, enabling a counterparty to **make collateral available without assigning it to a specific operation**. This technique is based on the concept of the collateral pool, referred to here as the ECMS pool.
- **Pool configuration** aims at defining, for a counterparty, where the collateral is mobilised to cover certain authorised types of credit operations.
- The **collateral** is reflected in the **collateral position** of the pool, while the covered **credit operations** are reflected in the pool's **credit positions**.
- Each NCB acting as a **refinancing central bank** is responsible for **setting up the ECMS pools**. A counterparty may hold **more than one pool**.



2. Reference data

Create Pools/ (look & feel)

- Search and list screens for pools
- Collateral and Credit >> Pool Structure >> Pool General Reference Data >> click “Search”

Pool General Reference Data

Search : Pool General Reference Data

Pool Type -- Pool Identifier -- Pool Reference --

CLM MCA -- CLM CB Account --

Contingency Cash Account -- CB Contingency Cash Account -- Validity Start Date --

Validity End Date --

Reset Search

List : Pool General Reference Data

10 Page 1 of 3

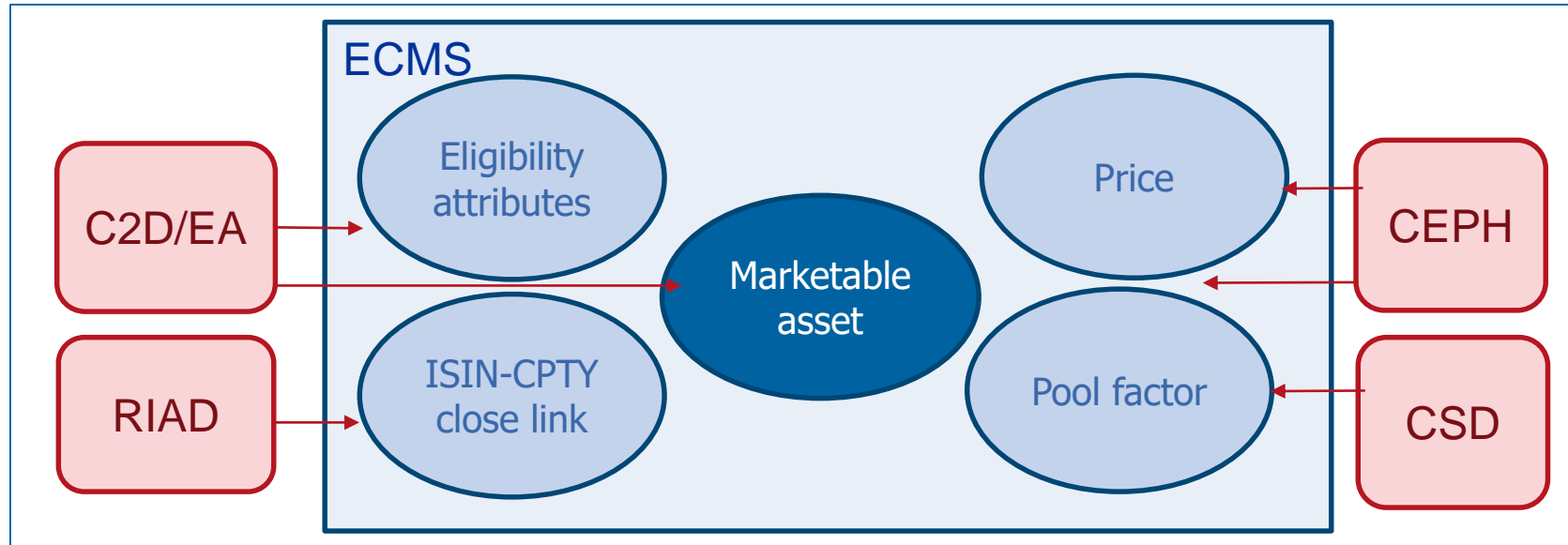
Pool Type	Pool Identifier	Pool Reference	Counterparty	CLM MCA	NCB CLM Main C	Contingency Cas	CB Contingency C	Absolute Credit Li	Relative Credit Li	Validity Start Date	Validity End Date	Creation Date	Update Date	Updater User Id
SCP	POOL000000000003	TestValidateReject	ABVR008	ABVRATWW008	NABAATWWXXX			01/09/2021	31/12/9999	01/09/2021 12:15...	29/05/2022 19:00...	ECMSOperationalD...
SCP	POOL000000000003	ABVR09POOL01	ABVR009	ABVRATWW009	NABAATWWXXX			01/09/2021	31/12/9999	01/09/2021 12:16...	29/05/2022 19:00...	ECMSOperationalD...
SCP	POOL000000000003	ABVR01POOL0	ABVR010	ABVRATWW010	NABAATWWXXX			01/09/2021	31/12/9999	01/09/2021 12:17...	29/05/2022 19:00...	ECMSOperationalD...
SCP	POOL000000000003	ABVR011POOL01	ABVR011	ABVRATWW011	NABAATWWXXX			01/09/2021	31/12/9999	01/09/2021 12:18...	29/05/2022 19:00...	ECMSOperationalD...
SCP	POOL000000000003	ABVR012POOL01	ABVR012	ABVRATWW012	NABAATWWXXX			01/09/2021	31/12/9999	01/09/2021 12:19...	29/05/2022 19:00...	ECMSOperationalD...
SCP	POOL000000000003	ABVR013POOL01	ABVR013	ABVRATWW013	NABAATWWXXX			01/09/2021	31/12/9999	01/09/2021 12:20...	29/05/2022 19:00...	ECMSOperationalD...
SCP	POOL000000000004	ABVR014POOL01	ABVR014	ABVRATWW014	NABAATWWXXX			01/09/2021	31/12/9999	01/09/2021 12:21...	29/05/2022 19:00...	ECMSOperationalD...
SCP	POOL000000000004	ABVR015POOL01	ABVR015	ABVRATWW015	NABAATWWXXX			01/09/2021	31/12/9999	01/09/2021 12:22...	29/05/2022 19:00...	ECMSOperationalD...
SCP	POOL000000000004		ABVR002	ABVRATWW002	NABAATWWXXX			01/09/2021	01/09/9999	01/09/2021 13:14...	29/05/2022 19:00...	ECMSOperationalD...
SCP	POOL000000000004		ABVR003	ABVRATWW003	NABAATWWXXX			01/09/2021	13/09/2021	01/09/2021 13:14...	13/09/2021 13:33...	STP

Edit View

2. Reference data

Monitoring marketable assets

- The ECMS manages reference data on **marketable assets** that can be used as collateral. This information is used to calculate the collateral value.
- These reference data **are the same for all NCBs acting as a refinancing central bank.**



- The responsible **NCB determines** the **eligibility of an asset**.
- The ECMS uses the **list of eligible assets** from **C2D/EA** (Collateral and Counterparties Database/Eligible Assets), which is consolidated, updated and published by the ECB on a daily basis, to flag assets as eligible.

These reference data include:

- a list of **marketable assets** received from C2D/EA that are **eligible** to be used in the ECMS and their **master data**;
- a list of **prices and accrued interest factors** to apply for the calculation of the collateral value;
- a list of **pool factors** to apply for the **calculation of the collateral value**;
- a list of **close links between a counterparty and an asset**.

2. Reference data

Eligible marketable assets (look & feel)

- “Search result: Marketable Asset” screen for displaying a list of collateral eligible for the ECMS
- Reference Data >> Reference Data >> Marketable Assets Reference Data >> Marketable Assets >> Monitor Marketable Assets>> click “Search”

Search Result : Marketable Asset

10 Page 1 of 1000

10000

<input checked="" type="checkbox"/>	ISIN	Asset Name	Denominatio	Asset Type	Maturity Date	Eligibility Stat	Emergency C	Own-Used	Issuer Code	Issuer Group	guarantor Co	Guarantor Gr	Action To Vali	Is Active	Validity End D	Date and tim	Update Date	Updater User	Rejected
<input checked="" type="checkbox"/>	AT0000172747	Va Hyp Noe Sc...	EUR	AT01	28/03/2033	Eligible	No		MFI-AT000007...	IG4	NCB-AT00000...	GG5		Yes	28/03/2033	13/05/2022 12...	13/05/2022 15...	ECMSOperatio...	No
<input type="checkbox"/>	AT0000248182	Va Baca Cms ...	EUR	AT01	06/06/2023	Eligible	No		MFI-AT000003...	IG4		Yes	06/06/2023	13/05/2022 12...	13/05/2022 15...	ECMSOperatio...	No
<input type="checkbox"/>	AT0000272505	Nf Erste Bksch...	ATS	AT01	15/07/2027	Eligible	No		MFI-AT000001...	IG4		Yes	15/07/2027	13/05/2022 12...	13/05/2022 15...	ECMSOperatio...	No
<input type="checkbox"/>	AT0000272513	Nf Erste Bksch...	ATS	AT01	15/07/2027	Eligible	No		MFI-AT000001...	IG4		Yes	15/07/2027	13/05/2022 12...	13/05/2022 15...	ECMSOperatio...	No
<input type="checkbox"/>	AT0000306691	Baw Vorsorga...	ATS	AT01	17/04/2033	Eligible	No		MFI-AT000000...	IG4		Yes	17/04/2033	13/05/2022 12...	13/05/2022 15...	ECMSOperatio...	No
<input type="checkbox"/>	AT0000325139	Va Hyp Stm Sc...	EUR	AT01	01/02/2030	Eligible	No		MFI-AT000000...	IG4	NCB-AT00000...	GG5		Yes	01/02/2030	13/05/2022 12...	13/05/2022 15...	ECMSOperatio...	No
<input type="checkbox"/>	AT0000325345	Va Hyp Stm Sc...	EUR	AT01	19/02/2032	Eligible	No		MFI-AT000000...	IG4	NCB-AT00000...	GG5		Yes	19/02/2032	13/05/2022 12...	13/05/2022 15...	ECMSOperatio...	No
<input type="checkbox"/>	AT0000325402	Hyp Stm Zero...	EUR	AT01	04/11/2032	Eligible	No		MFI-AT000000...	IG4	NCB-AT00000...	GG5		Yes	04/11/2032	13/05/2022 12...	13/05/2022 15...	ECMSOperatio...	No
<input type="checkbox"/>	AT0000325428	Hyp Stm Schw...	EUR	AT01	20/12/2022	Eligible	No		MFI-AT000000...	IG4	NCB-AT00000...	GG5		Yes	20/12/2022	13/05/2022 12...	13/05/2022 15...	ECMSOperatio...	No
<input type="checkbox"/>	AT0000325451	V Hypstm Fixr...	EUR	AT01	19/12/2032	Eligible	No		MFI-AT000000...	IG4	NCB-AT00000...	GG5		Yes	19/12/2032	13/05/2022 12...	13/05/2022 15...	ECMSOperatio...	No

History View

2. Reference data

Close links (look & feel)

- “Search result: Counterparty ISIN Close Link” for displaying a list of the counterparty-ISIN close links of marketable assets
- Reference Data >> Reference Data >> Counterparties Specific Reference Data >> Counterparty-ISIN Close Links Create/Display >> click “Search”

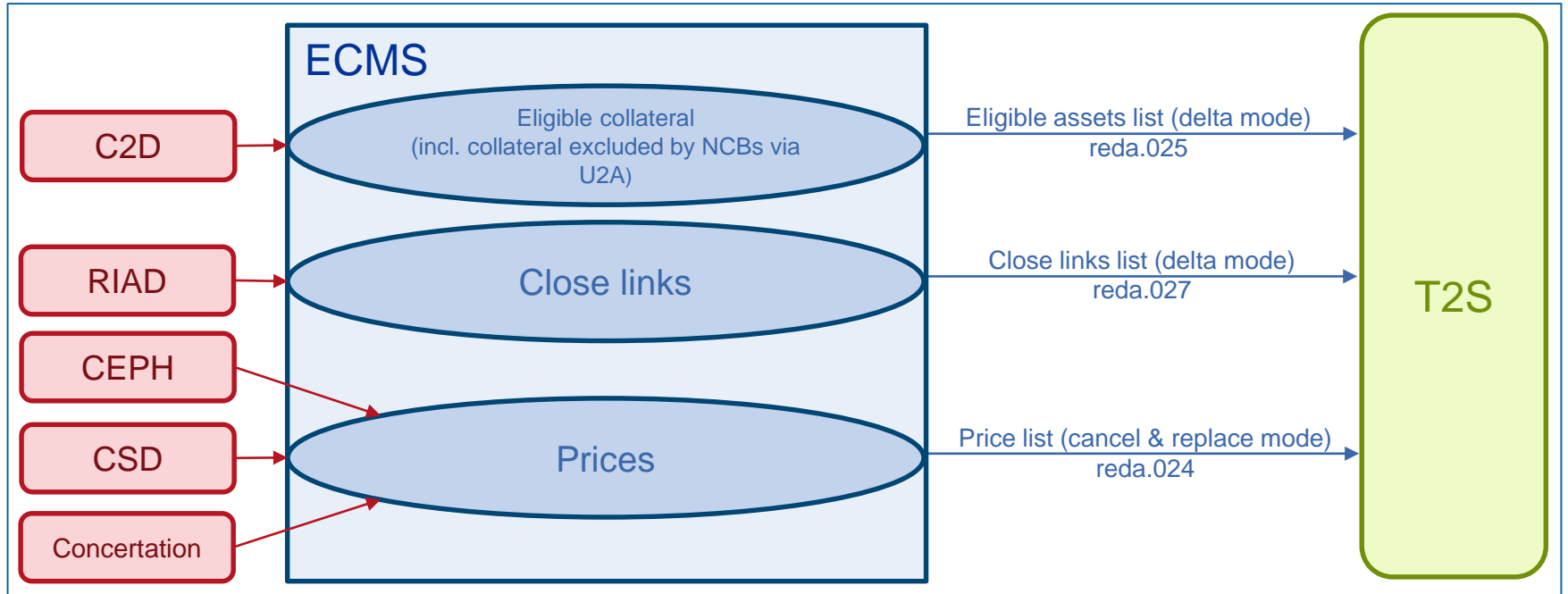
Search Result : Counterparty ISIN Close Link

ISIN	Counterparty	Close Link Type	Source	Exception flag	Validity Start Date	Validity End Date	Update Date	Updater User Id
NL0000102275	ABVR016	Forbidden	RIAD	No	09/05/2022	09/05/2029	10/05/2022 09:36:50:649	ECMS OPERATOR 1
AT0000A1XPN1	ABVR016	Authorized		No	07/02/2022		07/02/2022 08:43:24:697	STP
AT0000A1CJA5	ABVR016	Forbidden		No	08/09/2021		08/09/2021 09:00:01:880	STP
AT000B043997	ABVR016	Forbidden		No	06/09/2021		06/09/2021 11:34:47:973	STP
AT0000A26853	ABVR016	Authorized		No	06/09/2021		06/09/2021 11:34:12:076	STP

2. Reference data

Marketable assets (provision of reference data to T2S)

- The ECMS is responsible for the daily provision of the reference data needed to support auto-collateralisation in T2S.



2. Reference data

Settlement possibilities & T2S relocation

- The ECMS maintains reference data to determine the settlement possibility for the mobilisation instructions for marketable assets and to determine whether that settlement possibility is eligible or not.

For this purpose, the ECMS uses:

List of eligible links between CSDs

- Eligible securities can be mobilised for Eurosystem credit operations by using eligible links between eligible securities settlement systems (SSSs).
- Two types of link: **direct & relayed links**
- The **ECMS operator** is responsible for maintaining this list of eligible links (which is published and updated by the ECB and is available on its website).

List of settlement possibilities

- Used to determine the T2S security account that receives the asset for processing of a marketable asset mobilisation instruction.
- If this account is opened with a CSD that is not part of the counterparty's refinancing NCB, the settlement possibility indicates the cross-NCB asset account.
- If no settlement possibility is found, the instruction is rejected.
- To determine the potential settlement possibility for a marketable asset mobilisation instruction, the search is conducted based on the following criteria:
 - the CSD specified by the counterparty in the mobilisation instruction
 - and either
 - the NCB of the counterparty
 - or the ECMS counterparty asset account on which the asset is to be mobilised.

- Settlement possibilities are set up in **U2A mode in the Reference Data module**.
- **Only one settlement possibility** can be valid at any given time for a specific receiving CSD, a specific NCB and a specific ECMS counterparty asset account.
- **Only one link between the cross-NCB asset account and the T2S security account** can be valid at any given time for a specific ECMS cross-NCB asset account. Different ECMS cross-NCB asset accounts can be linked to the same T2S security account.
- Each **NCB** is responsible for **setting up the settlement possibilities** and for creating the list with the **link between the ECMS cross-NCB asset account and the T2S securities account**.
- Each **NCB** is responsible for **maintaining the T2S DCA mapping** for the T2S DCA of the counterparties in its community that use the auto-collateralisation function in T2S.

2. Reference data Settlement possibilities & T2S relocation (look & feel)

- Search and list screens of the reference data for settlement possibilities
- Reference Data >> Reference Data >> Settlement Possibilities and Eligible Links >> Settlement Possibilities Reference Data Create/Display >> click “Search”

Settlement Possibilities Reference Data Create/Display

Create / Display : Settlement Possibilities

Internal Asset Account: -- NCB Participant: -- NCB Participant Entity Type: -- CSD: --

Validity Start Date: >= 01/01/2020 Validity End Date: -- Update Date: -- Creation Date: --

[Reset](#) [Create](#) [Search](#)

Search Result : Settlement Possibilities

10 Page 1 of 5

	Internal Asset Account	NCB Participant	Context	NCB Participant Entity Type	CSD	Validity Start Date	Validity End Date	Update Date	Updater User Id	Creation Date	Type
<input type="checkbox"/>	ABVR404IAA01				AT9900	06/05/2022	31/12/9999	06/05/2022 10:51:47:119	STP	06/05/2022 10:51:47:119	com.vermeg.services.comRef...
<input type="checkbox"/>	CH9000IAA001				AT9900	10/03/2022	31/12/9999	10/03/2022 13:36:31:523	STP	10/03/2022 13:36:31:523	com.vermeg.services.comRef...
<input type="checkbox"/>	CROSSACCTPTY1				IBRC	08/03/2022	31/12/9999	08/03/2022 13:01:53:384	STP	08/03/2022 13:01:53:384	com.vermeg.services.comRef...
<input type="checkbox"/>	ABVR008IAACROS				IBRC	08/03/2022	31/12/9999	08/03/2022 13:01:27:000	ATCB003	08/03/2022 13:01:27:000	com.vermeg.services.comRef...
<input type="checkbox"/>	ABVR008IAA01				AT9900	22/02/2022	31/12/9999	22/02/2022 15:55:35:068	STP	22/02/2022 15:55:35:068	com.vermeg.services.comRef...
<input type="checkbox"/>	66423				AT9900	11/02/2022	31/12/9999	11/02/2022 10:01:30:655	ATCB003	11/02/2022 10:01:30:655	com.vermeg.services.comRef...
<input type="checkbox"/>	IAABOMNITEST8				AT9900	10/02/2022	31/12/9998	18/02/2022 17:08:18:762	ATCB003	10/02/2022 13:57:53:617	com.vermeg.services.comRef...
<input checked="" type="checkbox"/>	IAA1OMNITEST1				AT9900	10/02/2022	31/12/9999	10/02/2022 13:57:20:284	STP	10/02/2022 13:57:20:284	com.vermeg.services.comRef...
<input type="checkbox"/>	AT1276474COUNT01				AT9900	21/01/2022	31/12/9999	21/01/2022 10:23:12:903	STP	21/01/2022 10:23:12:903	com.vermeg.services.comRef...
<input type="checkbox"/>	ABVR001IAA03				AT9900	20/01/2022	31/12/2035	20/01/2022 16:34:06:947	STP	20/01/2022 16:34:06:947	com.vermeg.services.comRef...

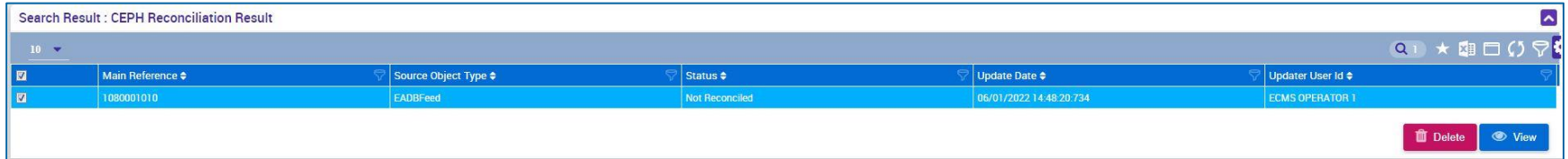
[History](#) [Edit](#) [View](#)

- The Common Eurosystem Pricing Hub (CEPH) interface provides the ECMS with a **unique price per marketable asset per business day** that is used by all Eurosystem central banks to value marketable assets submitted as collateral in Eurosystem credit operations.
- The CEPH interface serves to compile the prices for marketable assets in the ECMS reference data.
- There is an automatic reconciliation for cross-checking purposes based on three different areas:
 - **Received price** for marketable assets not available in the ECMS reference data
 - **Price variations** for all eligible assets
 - **Missing prices** for available marketable assets

2. Reference data

Interfaces/CEPH (look & feel)

- “Search Result: CEPH Reconciliation Result” screen for displaying a list of the CEPH data record
- Reference Data >> Interfaces >> CEPH >> CEPH Reconciliation Result >> click “Search”



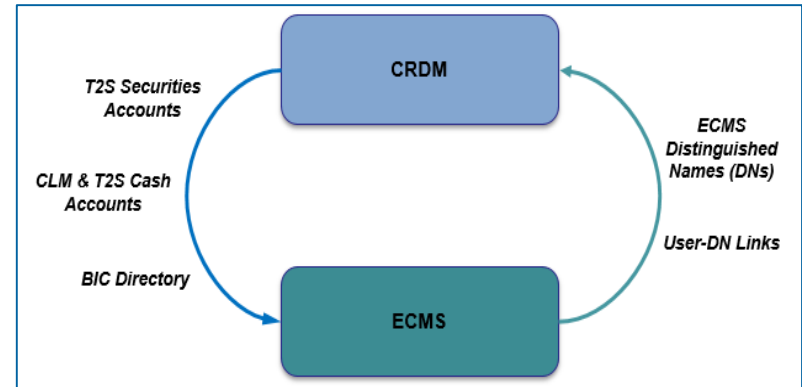
Search Result : CEPH Reconciliation Result

<input checked="" type="checkbox"/>	Main Reference ↓	Source Object Type ↓	Status ↓	Update Date ↓	Updater User Id ↓
<input checked="" type="checkbox"/>	1080001010	EADBFeed	Not Reconciled	06/01/2022 14:48:20.734	ECMS OPERATOR 1

2. Reference data

- The **Common Reference Data Management (CRDM)** manages the **data that are shared by various Eurosystem common components** in a single location.
- The ECMS shares the information shown in the adjacent chart. This creates added value for the system as it ensures complete **consistency of data across all platforms**; it protects users from manual errors and ensures error correction processes for the platforms in the event of a consistency error.
- In the event of **discrepancies**, the **ECMS operator** and the **NCB user are notified**.

Interfaces/CRDM



- The reference data for the ECMS contain various **generic code lists** which are used internally by the system.
 - These code lists are **managed by the ECMS operator** and can be viewed by **NCBs** and **counterparties** only for **consultation purposes**.
 - The following code lists can be displayed:
 - Currency
 - ECB interest rate
 - Country
 - Other “generic” data, i.e. data that can only be changed by the ECMS operator, are:
 - ECB calendar
 - Exchange rate
- See annex for screens (look & feel).

- The ECMS calendar defines the **days** on which the system is **open** for **collateral management**. The **ECMS operator** manages the ECMS operating day calendar and can create, update and delete closing days.
- The opening and closing days are based on the **CLM calendar**, including all **Saturdays, Sundays** and other specific days such as **25 December** and **1 January**, which are **common** closing days for all types of collateral management operations for all currencies.
- In addition, the following **closing days** are defined for **euro currency** in the CLM and therefore in the ECMS as well:

Good Friday

Easter Monday

Labour Day (1 May)

Boxing Day (26 December).

- If a refinancing NCB decides to **block** a counterparty in the ECMS due to a default event, on the grounds of prudence or for any other reason the **NCB deems necessary**, the NCB user **manually sets the status of the counterparty** to “**Blocked**” in the ECMS reference data.
- The **NCB** is required to give a **reason for blocking** when setting the status to “Blocked”.
- **Blocking prevents** the counterparty from sending **messages** to the ECMS **or creating instructions via U2A**. However, the **blocked counterparty** can **still access the system** in order to monitor its operations and retrieve positions and holdings.
- The **NCB** is also responsible for **lifting the “Blocked” status** if its criteria for blocking are no longer met.
- The ECMS records the **unblocking** at the counterparty level, sets the value of the **credit line to the value prior to blocking** and sends a modified credit line to the CLM if necessary.

2. Reference data

Other specialist reference data

Further information on the following reference data is given in the relevant **specialist training courses**:

- Reference data for credit claims
- Reference data for reporting
- Reference data for notifications

2. Reference data

Important documents

Public information (in chronological order)

- [Information Pack - ECMS Parties](#) (2020/01)
- [U2A and A2A Roles in the ECMS](#) (2021/06)
- [Explainer on Business Configurations in the ECMS](#) (2021/09)
- [TARGET Services Connectivity Guide](#) (v2.0, 2022/06)
- [Registration form and completion instructions for ECMS customer tests](#) (2022/12, in German)
- [ECMS User Handbook Counterparties](#) (v1.1, 2023/03)

If you have any questions or wish to say something,
please use the chat function.



- The invitation to this event includes a link to a standardised, anonymised feedback form.
- The feedback form contains 11 questions with a multi-level response scale. It should take a maximum of five minutes to complete.
- Once the event has ended, please take a few moments to fill out the form and give us honest feedback on this training course. Thank you!



Thank you for your attention ...

ecms-training@bundesbank.de

... and all the best working with ECMS!

- Generic data/currency (look & feel)
- Generic data/ECB interest rate (look & feel)
- Generic data/country (look & feel)

- “Search Result: Currency” screen for displaying list of currencies in descending order by update date
- Reference Data >> Reference Data >> Generic Data >> Create/Display Currency >> click “Search”

Search Result : Currency

10 Page 1 of 21

<input checked="" type="checkbox"/>	Currency Code	Currency Name	Number of Decimals	ISO Number	Update Date	Updater User Id
<input checked="" type="checkbox"/>	AED	DIRHAM EMIRATS ARABES	2		01/09/2021 10:57:00:006	admin
<input type="checkbox"/>	AFN	NEW AFGHANI	2		01/09/2021 10:57:00:026	admin
<input type="checkbox"/>	ALL	LEK (100 QUINTAR)	2		01/09/2021 10:57:00:032	admin
<input type="checkbox"/>	AMD	ARMENIAN DRAM	2		01/09/2021 10:57:00:036	admin
<input type="checkbox"/>	ANG	NETHERLANDS ANTILLEAN GUILDER	2		01/09/2021 10:57:00:040	admin
<input type="checkbox"/>	AOA	KWANZA	2		01/09/2021 10:57:00:045	admin
<input type="checkbox"/>	ARP	ARGENTINE PESO - OLD	2		01/09/2021 10:57:00:049	admin
<input type="checkbox"/>	ARS	ARGENTINE PESO	2		01/09/2021 10:57:00:053	admin
<input type="checkbox"/>	ATS	AUSTRIAN SCHILLING - OLD	2		01/09/2021 10:57:00:058	admin
<input type="checkbox"/>	AUD	AUSTRALIAN DOLLAR	2		01/09/2021 10:57:00:062	admin

[View](#)

- “Search Result: ECB Interest Rate” screen for displaying list of ECB interest rates in descending order by update date
- Reference Data >> Reference Data >> Generic Data >> ECB Interest Rate >> ECB Interest Rate Create/Display >> click “Search”

Search Result : ECB Interest Rate

10 Page 1 of 2

<input type="checkbox"/>	Rate Identifier	Reference Rate Date	Provider	Rate	Update Date	Updater User Id
<input checked="" type="checkbox"/>	Average MRO rate	27/09/2021	ECB	5	27/09/2021 17:47:11.493	ECMS OPERATOR 1
<input type="checkbox"/>	Average MRO rate	28/09/2021	ECB	10	27/09/2021 17:41:34.092	ECMS OPERATOR 1
<input type="checkbox"/>	Average MRO rate	11/02/2022	ECB	10	14/02/2022 12:17:37.571	ECMS OPERATOR 1
<input type="checkbox"/>	Average MRO rate	14/02/2022	ECB	20	14/02/2022 12:25:14.912	ECMS OPERATOR 1
<input type="checkbox"/>	ECB Deposit facility	15/07/2021	ECB	10	16/07/2021 16:26:38.690	ECMS OPERATOR 1
<input type="checkbox"/>	ECB Deposit facility	20/10/2021	ECB	50	20/10/2021 10:08:48.537	ECMS OPERATOR 1
<input type="checkbox"/>	ECB Deposit facility	21/10/2021	ECB	20	19/10/2021 20:32:53.919	ECMS OPERATOR 1
<input type="checkbox"/>	ECB Deposit facility	16/12/2021	ECB	13	16/12/2021 11:47:41.865	ECMS OPERATOR 1
<input type="checkbox"/>	ECB MarginalFacility	15/07/2021	ECB	10	16/07/2021 16:11:32.298	ECMS OPERATOR 1
<input type="checkbox"/>	ECB MarginalFacility	06/09/2021	ECB	20	07/09/2021 17:34:11.889	ECMS OPERATOR 1

[History](#) [View](#)

- “Search Result: Country” screen for displaying list of countries in descending order by update date
- Reference Data >> Reference Data >> Generic Data >> Country Create/Display >> click “Search”

Search Result : Country

10

Page 1 of 29

zB4

<input checked="" type="checkbox"/>	Country Code	Name	Currency	Update Date	Updater User id
<input checked="" type="checkbox"/>	AD	ANDORRA	EUR	01/09/2021 10:57:05:900	admin
<input type="checkbox"/>	AE	UNITED ARAB EMIRATES	AED	11/05/2022 18:00:49:772	ECMS OPERATOR 1
<input type="checkbox"/>	AF	AFGHANISTAN	AFN	01/09/2021 10:57:06:199	admin
<input type="checkbox"/>	AG	ANTIGUA AND BARBUDA	XCD	01/09/2021 10:57:06:311	admin
<input type="checkbox"/>	AI	ANGUILLA	XCD	01/09/2021 10:57:06:410	admin
<input type="checkbox"/>	AL	ALBANIA	ALL	01/09/2021 10:57:06:512	admin
<input type="checkbox"/>	AM	ARMENIA	AMD	01/09/2021 10:57:06:609	admin
<input type="checkbox"/>	AN	NETHERLANDS ANTILLES	ANG	01/09/2021 10:57:06:701	admin
<input type="checkbox"/>	AO	ANGOLA	AOA	01/09/2021 10:57:06:790	admin
<input type="checkbox"/>	AQ	ANTARCTIC	XXX	01/09/2021 10:57:06:870	admin

View